

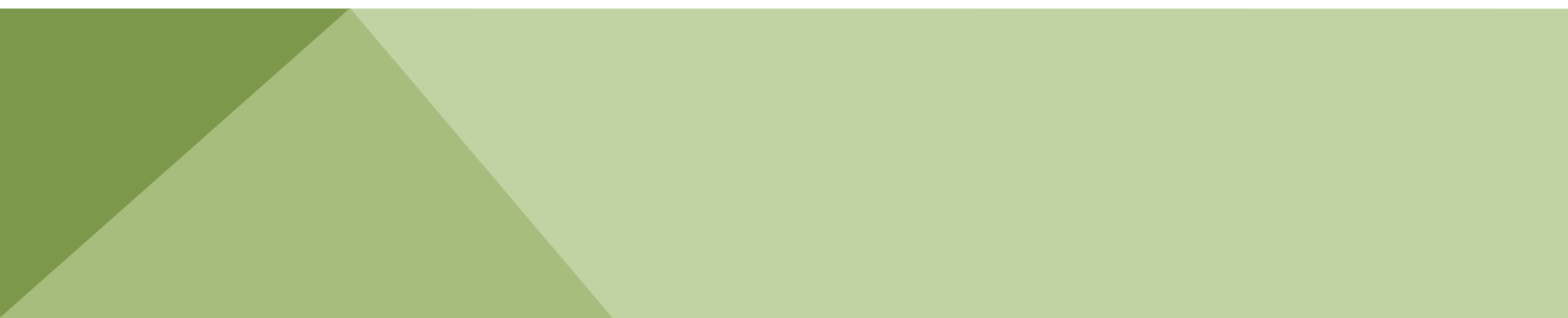
# **PARTICIPATORY GOVERNANCE & DECISION MAKING**

GROSSMONT COLLEGE



JANUARY 2019

# CONTENTS

- **Why Participatory Governance**
  - **Reviewing Our Governance Structure**
  - **Philosophy & Guiding Principles**
- 

# AB1725

---

AB 1725 legislates the implementation of shared or participatory governance on each California Community College Campus and ensures “minimum standards governing procedures established by governing boards of community college districts to ensure faculty, staff, and students the right to participate effectively in district and college governance, and the opportunity to express their opinions at the campus level and to ensure that these opinions are given every reasonable consideration, and the right of academic senates to assume primary responsibility for making recommendations in areas of curriculum and academic standards.” (Education Code Section 70901(b)(1) (E)).

Why Participatory Governance?

**Grossmont College strives to enhance student success, improve the student experience, and ensure equitable access and outcomes for all students. An effective participatory governance will support these outcomes and will create a trustworthy recommendation-making process that the college president can rely upon to guide their decisions\* on a broad range of policy development, resource allocations, and plans.**

# GCCCD BOARD POLICY

---

Four policies, approved by the Governing Board, are the pillars of the District’s institutional leadership, governance, and decision-making structure, and its model to ensure institutional effectiveness and adherence to ACCJC requirements

**BP 2510**

Participation in Local Decision-Making

**BP 2200**

Board Duties and Responsibilities

**BP 2430**

Delegation of Authority to Chancellor

**BP 5400**

Associated Student Government Associations

\*District BPs and APs may be found on the GCCCD website

<https://www.gcccd.edu/governing-board/policies-and-procedures.html>

# Why Participatory Governance?

---

## ACCREDITATION

---

### **Standard IV. A. 1**

Institutional leaders create and encourage innovation leading to institutional excellence. They support administrators, faculty, staff, and students, no matter what their official titles, in taking initiative for improving the practices, programs, and services in which they are involved. When ideas for improvement have policy or significant institution-wide implications, systematic participative processes are used to assure effective planning and implementation.

### **Standard IV. A. 2.**

The institution establishes and implements policy and procedures authorizing administrator, faculty, and staff participation in decision-making processes. The policy makes provisions for student participation and consideration of student views in those matters in which students have a direct and reasonable interest. Policy specifies the manner in which individuals bring forward ideas and work together on appropriate policy, planning, and special-purpose committees.

### **Standard IV. A. 3.**

Administrators and faculty, through policy and procedures, have a substantive and clearly defined role in institutional governance and exercise a substantial voice in institutional policies, planning, and budget that relate to their areas of responsibility and expertise.

### **Standard IV. A. 4**

Faculty and academic administrators, through policy and procedures, and through well-defined structures, have

### **Standard IV. A. 4continued**

responsibility for recommendations about curriculum and student learning programs and services.

### **Standard IV. A. 4**

Through its system of board and institutional governance, the institution ensures the appropriate consideration of relevant perspectives; decision-making aligned with expertise and responsibility; and timely action on institutional plans, policies, curricular change, and other key considerations.

### **Standard IV. A. 6**

The processes for decision-making and the resulting decisions are documented and widely communicated across the institution.

### **Standard IV. A. 7**

Leadership roles and the institution's governance and decision-making policies, procedures, and processes are regularly evaluated to assure their integrity and effectiveness. The institution widely communicates the results of these evaluations and uses them as the basis for improvement.

# I have an Idea!



# GROSSMONT COLLEGE GOVERNANCE

Committees work together – not in siloes



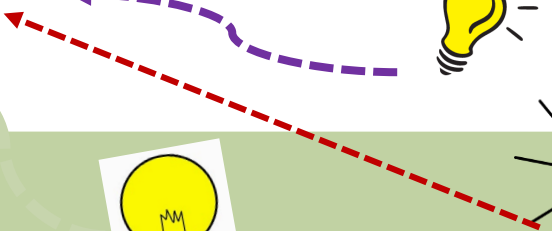
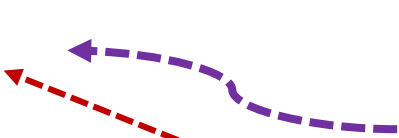
College Council



President



President's Cabinet



# Who Participates?

## Constituency Groups

Associated Students of Grossmont College

Classified Senate

Academic Senate

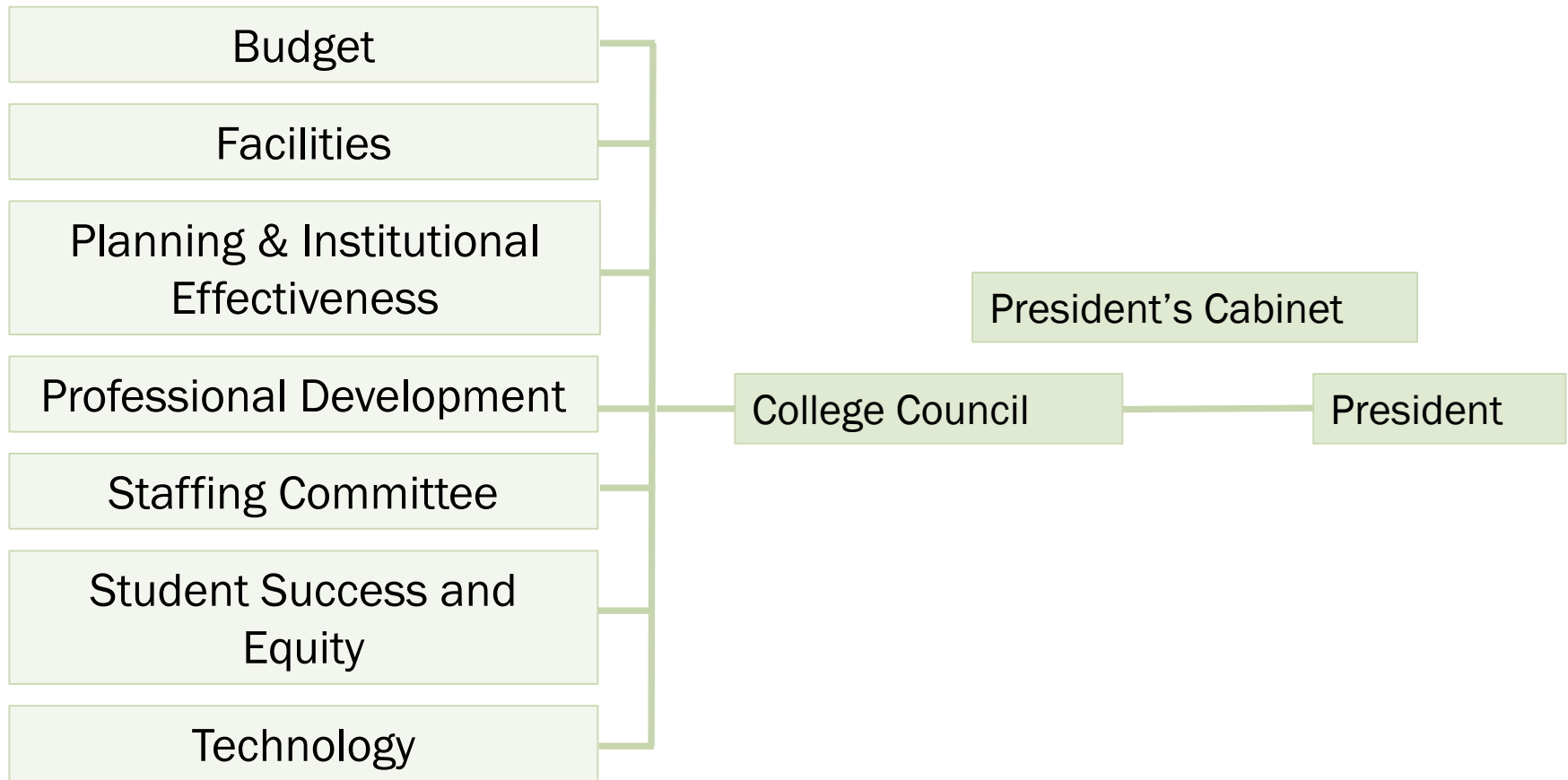
Administrators' Association

# ATTENDEE ROLES PG 12

1. Constituency
2. Ex-officio
3. Advisory
4. Proxy
5. Guests



# GROSSMONT COLLEGE GOVERNANCE MODEL



# PARTICIPATORY VS. OPERATIONAL

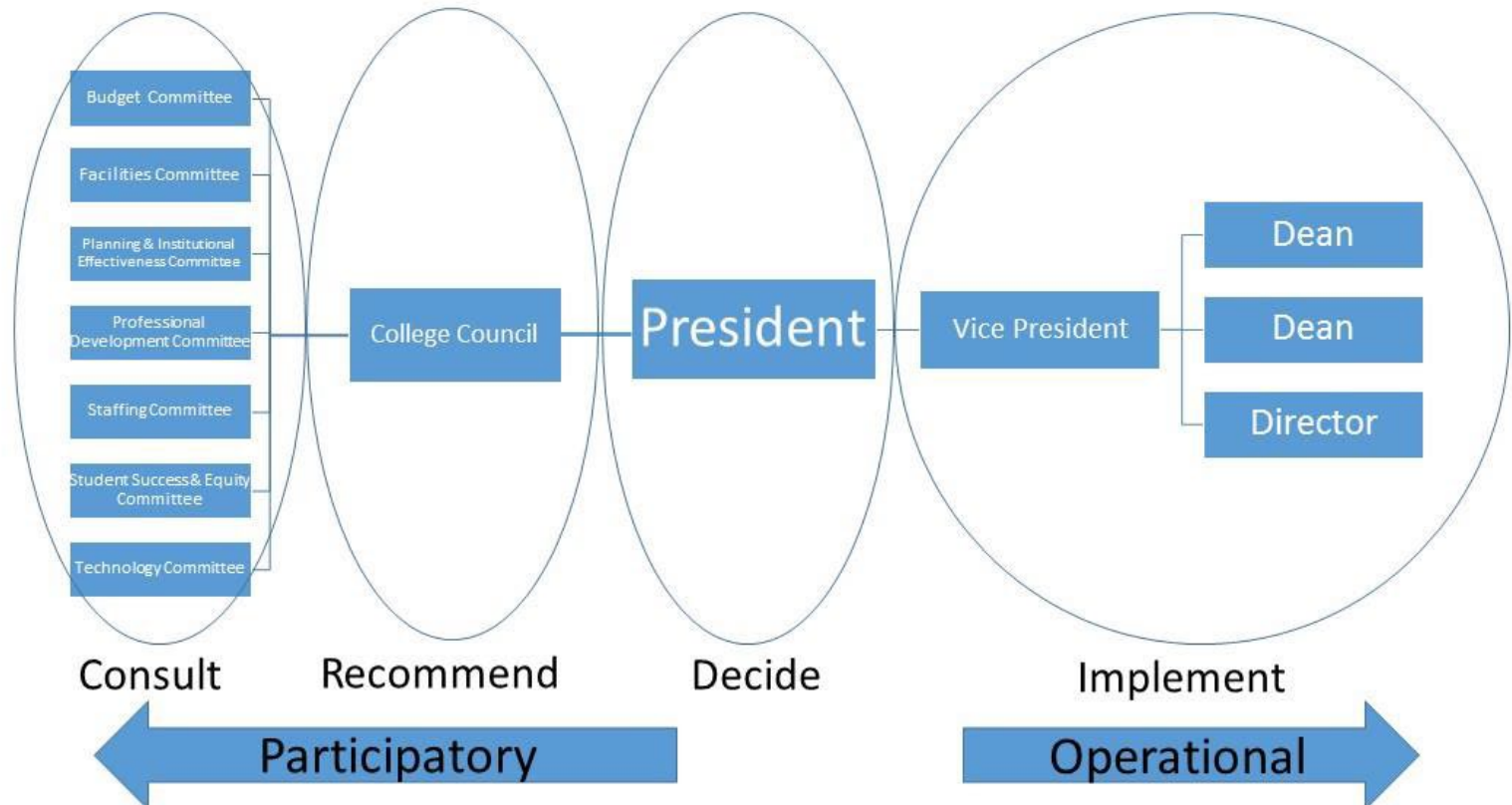
**Participatory Governance  
makes recommendations on  
Policy**



**Operational Committees  
puts into Practice**



# Participatory vs. Operational Example



# PARTICIPATORY

## Who participates?

### Seven Governance Committees

- Faculty
- Administrators' Association
  - (Supervisors/Managers)
- Classified Professionals
- Students
- Vice Presidents



# OPERATIONAL

## Who participates?

- Departments/Divisions
- Experts (professionals in the area to get the work done)



# GROSSMONT COLLEGE GOVERNANCE MODEL



Participatory



President



Operational

# GROSSMONT COLLEGE PHILOSOPHY AND GUIDING PRINCIPLES

Achieving “recommendations that advance Grossmont College in the direction of equity-minded, student-centered goals.”

# FOUNDATION

HOW DO WE USE **DIALOGUE** TO CREATE **VALUED**  
**OUTPUTS?**

## Participation

Dialogue  Valued Outputs



# Participation

## WHAT DOES IT MEAN TO PARTICIPATE?

1. To be present with others
2. To actively engage
3. To contribute to the creation of a **dialogue**

# Participation

## WHERE DO WE PARTICIPATE?



Within Constituency



Within Committee

# Participation as a Constituency Representative

## REPRESENTING YOUR CONSTITUENCY:

- You represent the interests of your **entire** constituency
- Communication and consultation within your constituency is the lifeblood of the system
- A **specific** communication and consultation **strategy** is essential for each constituency

## WHERE DO WE PARTICIPATE?

Within Constituency

The diagram features a light green background with a darker green diagonal stripe. Two thin, light brown lines extend from the top towards two light green ovals. The left oval contains the text 'Within Constituency' and the right oval contains 'Within Committee'.

Within Committee

# Participation as a Committee Member

## WHY ARE COMMITTEES A PART OF GOVERNANCE?

- Committees offer opportunities to share **experience and knowledge**
- These are spaces for dialogue and conversation
- Your participation should generate dialogue and allow the groups collective knowledge and experience inform the decision making process at Grossmont College.

## WHERE DO WE PARTICIPATE?

Within Constituency

Within Committee