

# WELCOME TO THE FACILITIES COMMITTEE

The best way to contact FMO is by email

[Grossmont.FMO@gcccd.edu](mailto:Grossmont.FMO@gcccd.edu)

For maintenance, grounds, custodial and operation needs  
Colleen Parsons, Ryan Althaus, Bill Roessner, Pepe Levy, Joel Lopez

[Grossmont.restrooms@gcccd.edu](mailto:Grossmont.restrooms@gcccd.edu)

For restrooms that need attention

FMO phone is not monitored 24/7  
619-644-7594

# FACILITIES COMMITTEE AGENDA

1. Welcome/Introductions - Jennifer
2. Agenda – Additions/Deletions – Jennifer
3. Approve Meeting Minutes – Jennifer
4. 5-Minute Public Comment – Jennifer
5. Constituency Updates – Jennifer
  1. Admin Association
  2. Classified Senate
  3. Academic Senate
  4. ASGC
6. **Communicating with FMO**
7. Nature Garden Signs – Bonnie Ripley
8. FPR update - Loren
9. Construction Timeline and Impacts - Loren
10. Constituency Group Time - Jennifer

DATE 11/1/23

# WELCOME TO THE FACILITIES COMMITTEE

The best way to contact FMO is by email

[Grossmont.FMO@gcccd.edu](mailto:Grossmont.FMO@gcccd.edu)

For maintenance, grounds, custodial and operation needs  
Colleen Parsons, Ryan Althaus, Bill Roessner, Pepe Levy, Joel Lopez

[Grossmont.restrooms@gcccd.edu](mailto:Grossmont.restrooms@gcccd.edu)

For restrooms that need attention

FMO phone is not monitored 24/7  
619-644-7594

# FACILITIES COMMITTEE AGENDA

1. Welcome/Introductions - Jennifer
2. Agenda – Additions/Deletions – Jennifer
3. Approve Meeting Minutes – Jennifer
4. 5-Minute Public Comment – Jennifer
5. Constituency Updates – Jennifer
  1. Admin Association
  2. Classified Senate
  3. Academic Senate
  4. ASGC
6. **Nature Garden Signs – Bonnie Ripley**
7. FPR update - Loren
8. Construction Timeline and Impacts - Loren
9. Constituency Group Time - Jennifer

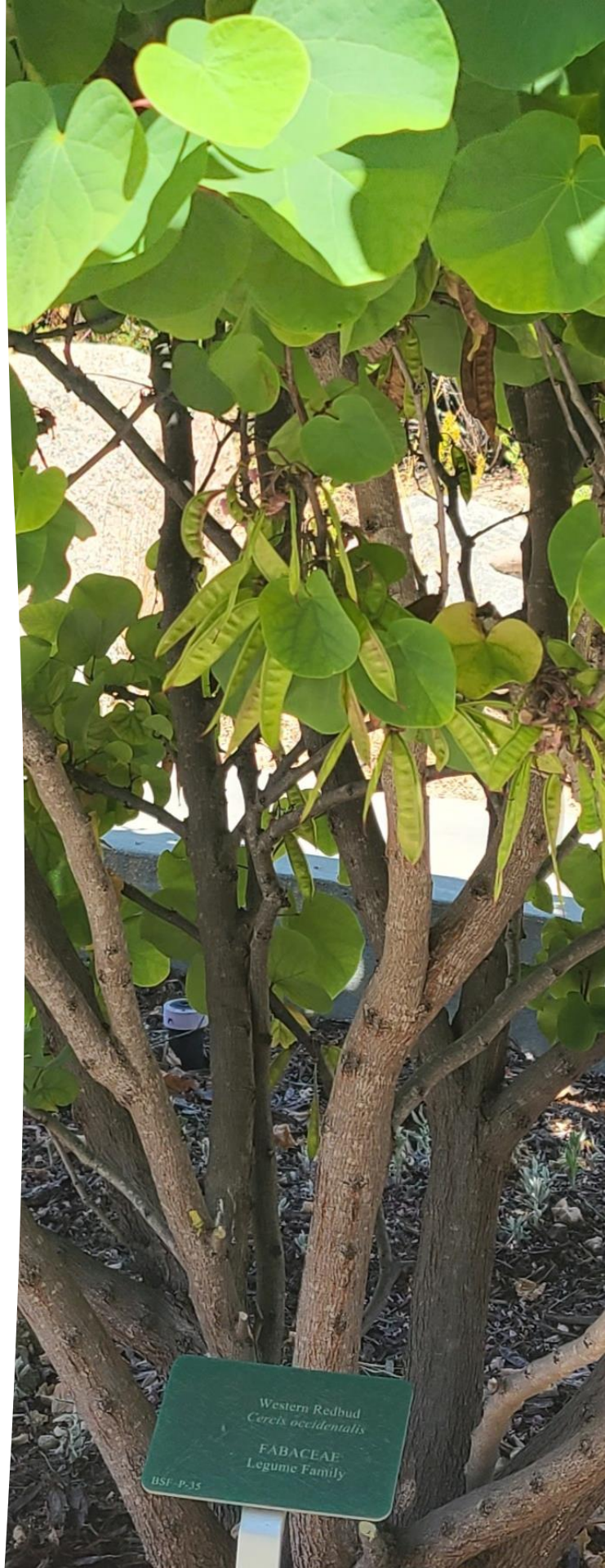
DATE 11/1/23

# Interactive Nature Trail

Proposal for Approval by GCCCD Governing Board

# Project Overview

This project will create a public Interactive Nature Trail on the Grossmont College campus. We will design and install interpretive signage on all six of Grossmont College's native plant gardens that represent different habitats and their uses in the most biodiverse county in the nation. A Kumeyaay Tribal representative will provide information on the names, usages, and history of the native plants. The signs will have scannable QR codes that will directly link to a website providing a nature walk map, all plant names (Common name, Latin binomial, and Kumeyaay name) associated with a picture, and additional history/information. The Grossmont College Nature Trail will provide underrepresented students and the local community an outdoor interactive classroom to engage with nature while learning about the local impacts of climate change, preserving native habitats and species, and expanding knowledge about Kumeyaay uses and names.



# GROSSMONT COLLEGE CAMPUS MAP



Additional Stations if resources allow or in future

Main area of Interactive Nature Trail Stations

- Restrooms
  - Disabled Parking
  - Water Filling Station
  - Lactation Station
- Please note:  
Grossmont College is a smoke-free & tobacco-free facility

**43** Gymnasium

**70** Library  
Learning and Technology Resource Center  
Technology Mail

**42** (Off-Campus)

**71** (Off-Campus)

**70-005** (Off-Campus)

**70-006** (Off-Campus)

**70-007** (Off-Campus)

**70-008** (Off-Campus)

**70-009** (Off-Campus)

**70-010** (Off-Campus)

**70-011** (Off-Campus)

**70-012** (Off-Campus)

**70-013** (Off-Campus)

**70-014** (Off-Campus)

**70-015** (Off-Campus)

**70-016** (Off-Campus)

**70-017** (Off-Campus)

**70-018** (Off-Campus)

**70-019** (Off-Campus)

**70-020** (Off-Campus)

**70-021** (Off-Campus)

**70-022** (Off-Campus)

**70-023** (Off-Campus)

**70-024** (Off-Campus)

**70-025** (Off-Campus)

**70-026** (Off-Campus)

**70-027** (Off-Campus)

**70-028** (Off-Campus)

**70-029** (Off-Campus)

**70-030** (Off-Campus)

**70-031** (Off-Campus)

**70-032** (Off-Campus)

**70-033** (Off-Campus)

**70-034** (Off-Campus)

**70-035** (Off-Campus)

**70-036** (Off-Campus)

**70-037** (Off-Campus)

**70-038** (Off-Campus)

**70-039** (Off-Campus)

**70-040** (Off-Campus)

**70-041** (Off-Campus)

**70-042** (Off-Campus)

**70-043** (Off-Campus)

**70-044** (Off-Campus)

**70-045** (Off-Campus)

**70-046** (Off-Campus)

**70-047** (Off-Campus)

**70-048** (Off-Campus)

**70-049** (Off-Campus)

**70-050** (Off-Campus)

**70-051** (Off-Campus)

**70-052** (Off-Campus)

**70-053** (Off-Campus)

**70-054** (Off-Campus)

**70-055** (Off-Campus)

**70-056** (Off-Campus)

**70-057** (Off-Campus)

**70-058** (Off-Campus)

**70-059** (Off-Campus)

**70-060** (Off-Campus)

**70-061** (Off-Campus)

**70-062** (Off-Campus)

**70-063** (Off-Campus)

**70-064** (Off-Campus)

**70-065** (Off-Campus)

**70-066** (Off-Campus)

**70-067** (Off-Campus)

**70-068** (Off-Campus)

**70-069** (Off-Campus)

**70-070** (Off-Campus)

**70-071** (Off-Campus)

**70-072** (Off-Campus)

**70-073** (Off-Campus)

**70-074** (Off-Campus)

**70-075** (Off-Campus)

**70-076** (Off-Campus)

**70-077** (Off-Campus)

**70-078** (Off-Campus)

**70-079** (Off-Campus)

**70-080** (Off-Campus)

**70-081** (Off-Campus)

**70-082** (Off-Campus)

**70-083** (Off-Campus)

**70-084** (Off-Campus)

**70-085** (Off-Campus)

**70-086** (Off-Campus)

**70-087** (Off-Campus)

**70-088** (Off-Campus)

**70-089** (Off-Campus)

**70-090** (Off-Campus)

**70-091** (Off-Campus)

**70-092** (Off-Campus)

**70-093** (Off-Campus)

**70-094** (Off-Campus)

**70-095** (Off-Campus)

**70-096** (Off-Campus)

**70-097** (Off-Campus)

**70-098** (Off-Campus)

**70-099** (Off-Campus)

**70-100** (Off-Campus)

**70-101** (Off-Campus)

**70-102** (Off-Campus)

**70-103** (Off-Campus)

**70-104** (Off-Campus)

**70-105** (Off-Campus)

**70-106** (Off-Campus)

**70-107** (Off-Campus)

**70-108** (Off-Campus)

**70-109** (Off-Campus)

**70-110** (Off-Campus)

**70-111** (Off-Campus)

**70-112** (Off-Campus)

**70-113** (Off-Campus)

**70-114** (Off-Campus)

**70-115** (Off-Campus)

**70-116** (Off-Campus)

**70-117** (Off-Campus)

**70-118** (Off-Campus)

**70-119** (Off-Campus)

**70-120** (Off-Campus)

**70-121** (Off-Campus)

**70-122** (Off-Campus)

**70-123** (Off-Campus)

**70-124** (Off-Campus)

**70-125** (Off-Campus)

**70-126** (Off-Campus)

**70-127** (Off-Campus)

**70-128** (Off-Campus)

**70-129** (Off-Campus)

**70-130** (Off-Campus)

**70-131** (Off-Campus)

**70-132** (Off-Campus)

**70-133** (Off-Campus)

**70-134** (Off-Campus)

**70-135** (Off-Campus)

**70-136** (Off-Campus)

**70-137** (Off-Campus)

**70-138** (Off-Campus)

**70-139** (Off-Campus)

**70-140** (Off-Campus)

**70-141** (Off-Campus)

**70-142** (Off-Campus)

**70-143** (Off-Campus)

**70-144** (Off-Campus)

**70-145** (Off-Campus)

**70-146** (Off-Campus)

**70-147** (Off-Campus)

**70-148** (Off-Campus)

**70-149** (Off-Campus)

**70-150** (Off-Campus)

**70-151** (Off-Campus)

**70-152** (Off-Campus)

**70-153** (Off-Campus)

**70-154** (Off-Campus)

**70-155** (Off-Campus)

**70-156** (Off-Campus)

**70-157** (Off-Campus)

**70-158** (Off-Campus)

**70-159** (Off-Campus)

**70-160** (Off-Campus)

**70-161** (Off-Campus)

**70-162** (Off-Campus)

**70-163** (Off-Campus)

**70-164** (Off-Campus)

**70-165** (Off-Campus)

**70-166** (Off-Campus)

**70-167** (Off-Campus)

**70-168** (Off-Campus)

**70-169** (Off-Campus)

**70-170** (Off-Campus)

**70-171** (Off-Campus)

**70-172** (Off-Campus)

**70-173** (Off-Campus)

**70-174** (Off-Campus)

**70-175** (Off-Campus)

**70-176** (Off-Campus)

**70-177** (Off-Campus)

**70-178** (Off-Campus)

**70-179** (Off-Campus)

**70-180** (Off-Campus)

**70-181** (Off-Campus)

**70-182** (Off-Campus)

**70-183** (Off-Campus)

**70-184** (Off-Campus)

**70-185** (Off-Campus)

**70-186** (Off-Campus)

**70-187** (Off-Campus)

**70-188** (Off-Campus)

**70-189** (Off-Campus)

**70-190** (Off-Campus)

**70-191** (Off-Campus)

**70-192** (Off-Campus)

**70-193** (Off-Campus)

**70-194** (Off-Campus)

**70-195** (Off-Campus)

**70-196** (Off-Campus)

**70-197** (Off-Campus)

**70-198** (Off-Campus)

**70-199** (Off-Campus)

**70-200** (Off-Campus)

**70-201** (Off-Campus)

**70-202** (Off-Campus)

**70-203** (Off-Campus)

**70-204** (Off-Campus)

**70-205** (Off-Campus)

**70-206** (Off-Campus)

**70-207** (Off-Campus)

**70-208** (Off-Campus)

**70-209** (Off-Campus)

**70-210** (Off-Campus)

**70-211** (Off-Campus)

**70-212** (Off-Campus)

**70-213** (Off-Campus)

**70-214** (Off-Campus)

**70-215** (Off-Campus)

**70-216** (Off-Campus)

**70-217** (Off-Campus)

**70-218** (Off-Campus)

**70-219** (Off-Campus)

**70-220** (Off-Campus)

**70-221** (Off-Campus)

**70-222** (Off-Campus)

**70-223** (Off-Campus)

**70-224** (Off-Campus)

**70-225** (Off-Campus)

**70-226** (Off-Campus)

**70-227** (Off-Campus)

**70-228** (Off-Campus)

**70-229** (Off-Campus)

**70-230** (Off-Campus)

**70-231** (Off-Campus)

**70-232** (Off-Campus)

**70-233** (Off-Campus)

**70-234** (Off-Campus)

**70-235** (Off-Campus)

**70-236** (Off-Campus)

**70-237** (Off-Campus)

**70-238** (Off-Campus)

**70-239** (Off-Campus)

**70-240** (Off-Campus)

**70-241** (Off-Campus)

**70-242** (Off-Campus)

**70-243** (Off-Campus)

**70-244** (Off-Campus)

**70-245** (Off-Campus)

**70-246** (Off-Campus)

**70-247** (Off-Campus)

**70-248** (Off-Campus)

**70-249** (Off-Campus)

**70-250** (Off-Campus)

**70-251** (Off-Campus)

**70-252** (Off-Campus)

**70-253** (Off-Campus)

**70-254** (Off-Campus)

**70-255** (Off-Campus)

**70-256** (Off-Campus)

**70-257** (Off-Campus)

**70-258** (Off-Campus)

**70-259** (Off-Campus)

**70-260** (Off-Campus)

**70-261** (Off-Campus)

**70-262** (Off-Campus)

**70-263** (Off-Campus)

**70-264** (Off-Campus)

**70-265** (Off-Campus)

**70-266** (Off-Campus)

**70-267** (Off-Campus)

**70-268** (Off-Campus)

**70-269** (Off-Campus)

**70-270** (Off-Campus)

**70-271** (Off-Campus)

**70-272** (Off-Campus)

**70-273** (Off-Campus)

**70-274** (Off-Campus)

**70-275** (Off-Campus)

**70-276** (Off-Campus)

**70-277** (Off-Campus)

**70-278** (Off-Campus)

**70-279** (Off-Campus)

**70-280** (Off-Campus)

**70-281** (Off-Campus)

**70-282** (Off-Campus)

**70-283** (Off-Campus)

**70-284** (Off-Campus)

**70-285** (Off-Campus)

**70-286** (Off-Campus)

**70-287** (Off-Campus)

**70-288** (Off-Campus)

**70-289** (Off-Campus)

**70-290** (Off-Campus)

**70-291** (Off-Campus)

**70-292** (Off-Campus)

**70-293** (Off-Campus)

**70-294** (Off-Campus)

**70-295** (Off-Campus)

**70-296** (Off-Campus)

**70-297** (Off-Campus)

**70-298** (Off-Campus)

**70-299** (Off-Campus)

**70-300** (Off-Campus)

**70-301** (Off-Campus)

**70-302** (Off-Campus)

**70-303** (Off-Campus)

**70-304** (Off-Campus)

**70-305** (Off-Campus)

**70-306** (Off-Campus)

**70-307** (Off-Campus)

**70-308** (Off-Campus)

**70-309** (Off-Campus)

**70-310** (Off-Campus)

**70-311** (Off-Campus)

**70-312** (Off-Campus)

**70-313** (Off-Campus)

**70-314** (Off-Campus)

**70-315** (Off-Campus)

**70-316** (Off-Campus)

**70-317** (Off-Campus)

**70-318** (Off-Campus)

**70-319** (Off-Campus)

**70-320** (Off-Campus)

**70-321** (Off-Campus)

**70-322** (Off-Campus)

**70-323** (Off-Campus)

**70-324** (Off-Campus)

**70-325** (Off-Campus)

**70-326** (Off-Campus)

**70-327** (Off-Campus)

**70-328** (Off-Campus)

**70-329** (Off-Campus)

**70-330** (Off-Campus)

**70-331** (Off-Campus)

**70-332** (Off-Campus)

**70-333** (Off-Campus)

**70-334** (Off-Campus)

**70-335** (Off-Campus)

**70-336** (Off-Campus)

**70-337** (Off-Campus)

**70-338** (Off-Campus)

**70-339** (Off-Campus)

**70-340** (Off-Campus)

**70-341** (Off-Campus)

**70-342** (Off-Campus)

**70-343** (Off-Campus)

**70-344** (Off-Campus)

**70-345** (Off-Campus)

**70-346** (Off-Campus)

**70-347** (Off-Campus)

**70-348** (Off-Campus)

**70-349** (Off-Campus)

**70-350** (Off-Campus)

**70-351** (Off-Campus)

**70-352** (Off-Campus)

**70-353** (Off-Campus)

**70-354** (Off-Campus)

**70-355** (Off-Campus)

**70-356** (Off-Campus)

**70-357** (Off-Campus)

**70-358** (Off-Campus)

**70-359** (Off-Campus)

**70-360** (Off-Campus)

**70-361** (Off-Campus)

**70-362** (Off-Campus)

**70-363** (Off-Campus)

**70-364** (Off-Campus)

**70-365** (Off-Campus)

**70-366** (Off-Campus)

**70-367** (Off-Campus)

**70-368** (Off-Campus)

**70-369** (Off-Campus)

**70-370** (Off-Campus)

**70-371** (Off-Campus)

**70-372** (Off-Campus)

**70-373** (Off-Campus)

**70-374** (Off-Campus)

**70-375** (Off-Campus)

**70-376** (Off-Campus)

**70-377** (Off-Campus)

**70-378** (Off-Campus)

**70-379** (Off-Campus)

**70-380** (Off-Campus)

**70-381** (Off-Campus)

**70-382** (Off-Campus)

**70-383** (Off-Campus)

**70-384** (Off-Campus)

**70-385** (Off-Campus)

**70-386** (Off-Campus)

**70-387** (Off-Campus)

**70-388** (Off-Campus)

**70-389** (Off-Campus)

**70-390** (Off-Campus)

**70-391** (Off-Campus)

**70-392** (Off-Campus)

**70-393** (Off-Campus)

**70-394** (Off-Campus)

**70-395** (Off-Campus)

**70-396** (Off-Campus)

**70-397** (Off-Campus)

**70-398** (Off-Campus)

**70-399** (Off-Campus)

**70-400** (Off-Campus)

- Bldg. 100**  
Classrooms:  
102A  
102B  
103A  
106  
109  
110  
111  
114  
115  
116  
117  
120A  
121A  
123A  
123B  
125  
126  
127  
128  
129  
130

- Bldg. 60**  
Adult Re-entry  
A.R.C.  
Student Employment Services
- Bldg. 60 Upstairs**  
ASGC Board Room  
Common Ground  
Student Affairs
- Bldg. 10**  
Admissions & Records  
Assessment & Testing  
College Cashier  
College & Community Relations  
College Conference Room  
College Planning & Institutional Effectiveness  
Counseling Center  
Deans Offices  
Financial Aid  
International Student Counseling Office  
Instructional Operations  
Mail Room & Business Communications Office  
President/Vice-Presidents Offices  
Student Activities Window  
Transfer Center  
Veterans Affairs

GROSSMONT  
COLLEGE



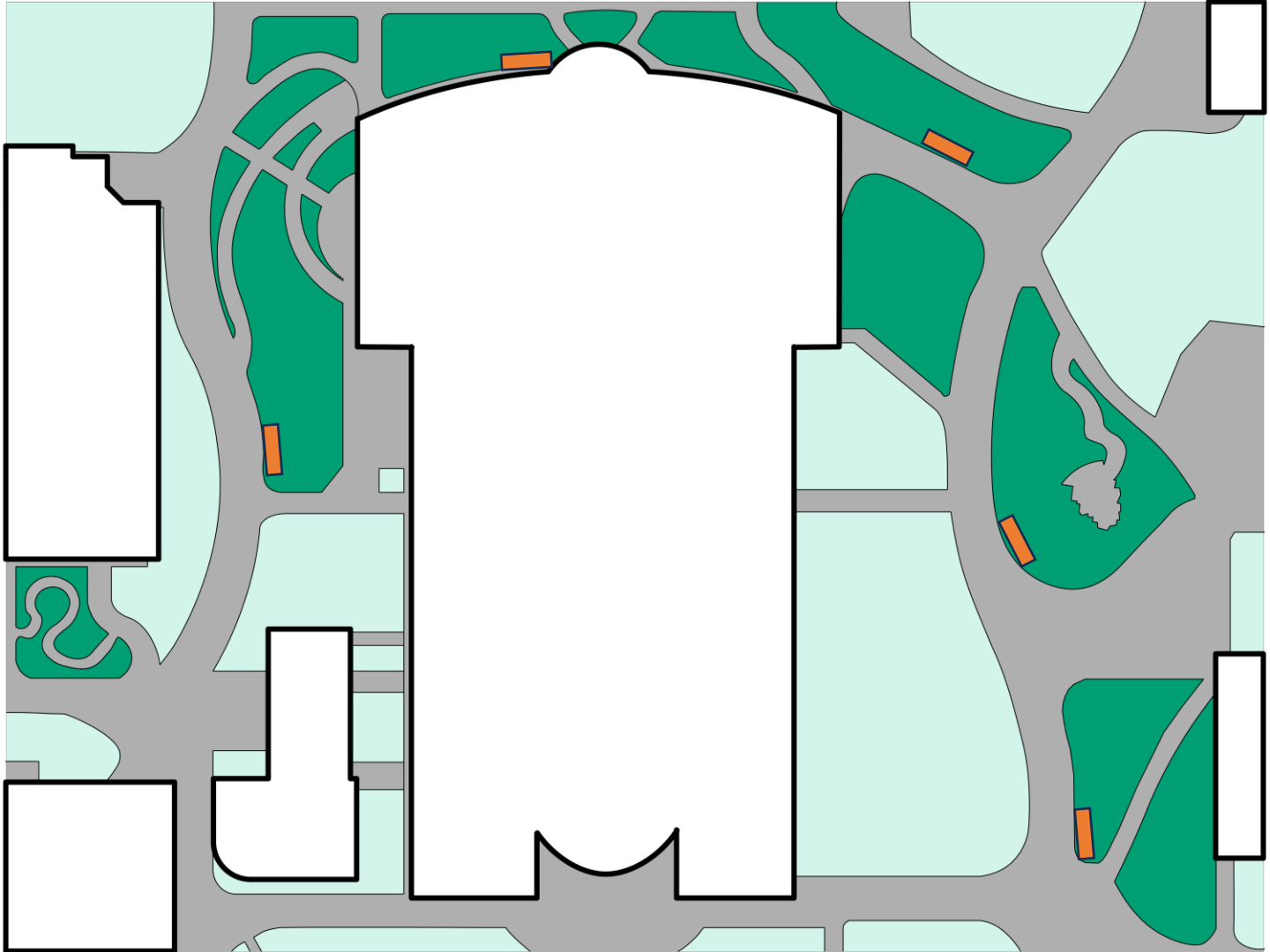
# Close-up View of Nature Trail Station Locations in Central Campus



- |                               |                      |
|-------------------------------|----------------------|
| 1) Trail Information/Overview | 4) Chaparral         |
| 2) Coastal Sage Scrub         | 5) Riparian          |
| 3) Oak Woodland               | 6) Pollinator Garden |



# Detailed Graphical Map of Trail





## Project Tasks

- Refurbish and replant missing plants, additional plants in all garden areas
- Identify and replace incorrect botanical signs
- Identify Nature Trail Stations
- ***Design interpretive wayside signs for each station***
- Build project web site, including audio recordings and translations into most common languages on campus
- Order and install signs

# Wayside Interpretive Exhibit Signage

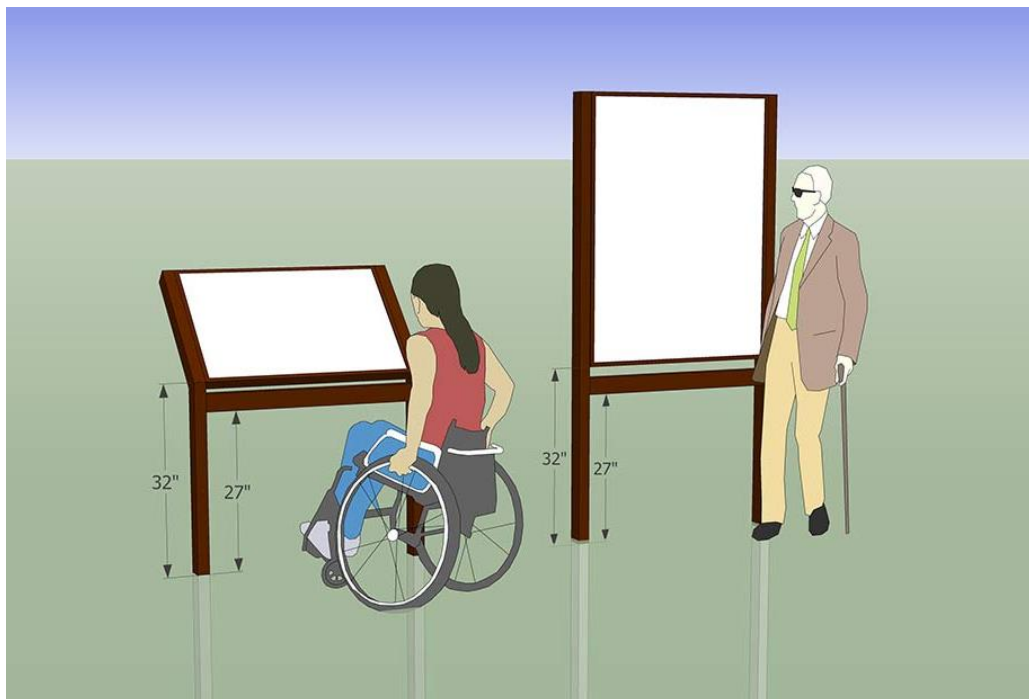
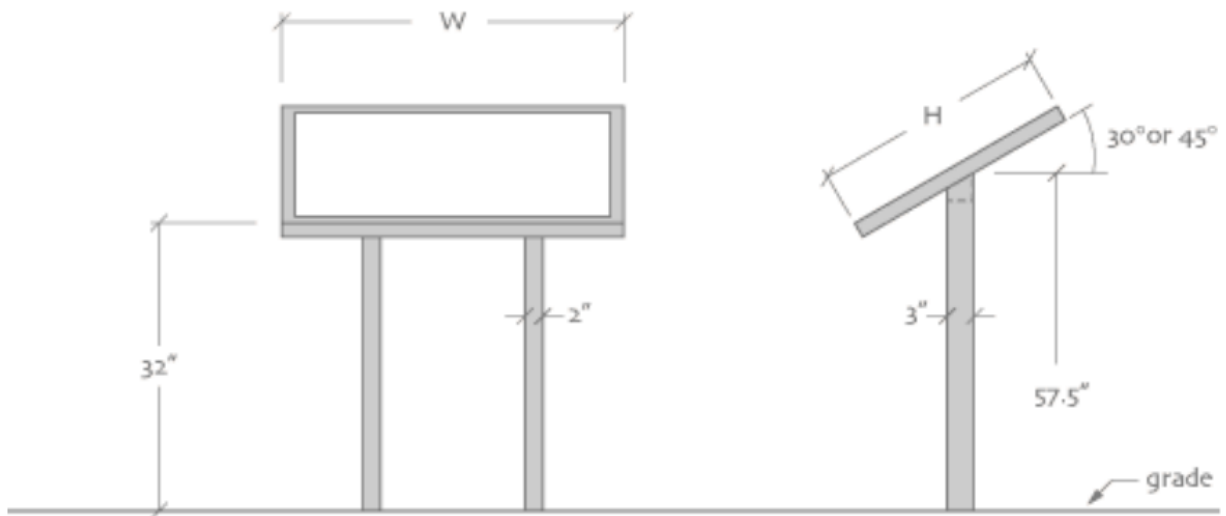


## NPS Style Exhibit Bases

The National Park Service uses two “wayside interpretive exhibit” base styles – “traditional low-profile” and “cantilever low-profile.” Our NPS Style exhibit bases have a full metal backing and are made for use with 1/8" thick sign panels. Standard finish is a black powder coat. Custom sizes, finishes, and surface-mount options are available (45-degree angle is standard, 30-degree is optional). The bases are constructed of 10% recycled aluminum extrusion. The exhibit base is used with frames that are 18" to 24" high and 24," 36," and 42" wide. The interpretive sign panels are easily installed by removing the top section of the frame, inserting the sign panel, and replacing the top section. All of these mountings can be in-ground or surface mounted.

As shown from [Envirosigns Interpretive Solutions](#)

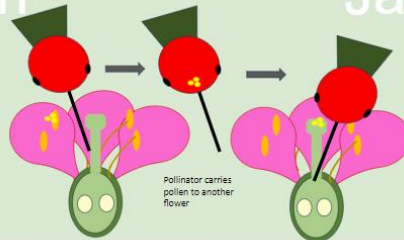
# Accessible Design Features



# Tentative Design: Pollinator Garden

## Pollinator Garden

Most flowering plants cooperate with animals to reproduce. The pollen transfer fertilizes the eggs, allowing the plant to make fruits and seeds, which contain the developing offspring.



## Jardin Polinizadores

Plantas florizadas... cooperate with animals to reproduce. The pollen transfer fertilizes the eggs, allowing the plant to make fruits and seeds, which contain the developing offspring.



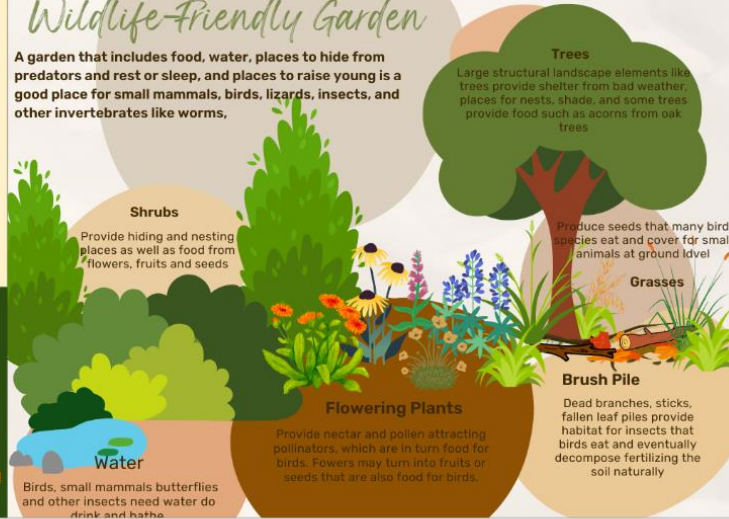
Butterfly/Mariposa



Moth/Polilla

### Wildlife-Friendly Garden

A garden that includes food, water, places to hide from predators and rest or sleep, and places to raise young is a good place for small mammals, birds, lizards, insects, and other invertebrates like worms.



Native plants need little water and no fertilizer or pesticides. They are the base of the food web, allowing all kinds of animals to live around them

Plantas nativas ...and no fertilizer or pesticides. They are the base of the food web, allowing all kinds of animals to live around them

Grossmont logo

For more information about the plants in this garden, an audio tour, Arabic translation, and more, visit this web site:

QR code

Audubon logo

# FACILITIES COMMITTEE AGENDA

1. Welcome/Introductions - Jennifer
2. Agenda – Additions/Deletions – Jennifer
3. Approve Meeting Minutes – Jennifer
4. 5-Minute Public Comment – Jennifer
5. Constituency Updates – Jennifer
  1. Admin Association
  2. Classified Senate
  3. Academic Senate
  4. ASGC
6. Nature Garden Signs – Bonnie Ripley
7. **FPR update - Loren**
8. Construction Timeline and Impacts - Loren
9. Constituency Group Time - Jennifer

DATE 11/1/23

# FPR Section 1 Received

FPR#	Name of FPR Project	Description
24-01	Mental Health	Remodeling current space to add at least two offices and one storage.
24-02	Welcome Desk	Welcome Desk/Information Station at the entrance of Building 10 to welcome students
24-03	Reflection Room	A space that fosters reflection, meditation, and contemplation, providing
24-04	Chemistry Whiteboard	Whiteboard installed on the brick wall in the second-floor hallway in building 30, outside of the chemistry faculty
24-05	Softball Grass	Removal of all grass from the foul area of the softball field and in front of the dugouts.
24-06	Chemistry Cabinet for Techs	Repair or replace chemical cabinets in the tech work room
24-07	Chemistry Cabinet for Labs	Repair the back side of the sink cabinets
24-08	Fume Hood Bars	Replace the fume hood instrument bars
24-09	Bio Cabinets 30-128	Bldg 30-128 biology lab need more upper cabinet space above counter.
24-10	Nature Trail	Add water bars on the nature trail.
24-11	Bio Chairs 30-128 & 154	Replace stools with chairs with backs.
24-12	<del>Softball Foul Lines</del>	
24-13	Martha	2nd floor of Tech turned into student serving programs such as Justice Scholars, Umoja/A2Mend, Puente, Deram Center & Jewish Family Service. Need electrical, lighting, painting, hyflex, glass doors, flooring, signage, new furniture, CPUs
24-14	Convert 29A to Lab	Convert storage space to student lab space.

# FPR Form 2

- 8) **FMO Impact:** Will your project require extensive labor or time from Facilities, Maintenance, & Operations staff?  
 Yes  
 No  
 Unsure
- 9) **Benefit and Impact on Students:** How will this resource impact students' learning and/or experience (at the course/program/service level and/or engagement level)?
- 10) **Benefit and Impacts to the College Campus:** (How will this project enhance or impact other college programs, services, and/or operations?)
- 11) **Project support:** Does your project support one or more of the following? If so, please explain.  
 College or District Facilities Master Plan \_\_\_\_\_  
 Sustainability Impact \_\_\_\_\_  
 ADA accessibility \_\_\_\_\_

## Director's Report

TOTAL ESTIMATE COST	\$0	Including Public Works & Engineering
POSSIBLE COST REDUCTION	\$0	
TOTAL COST WITH REDUCTION	\$0	
Possible Criteria Scores: 0-5 with 5 the highest score		
(1) CONSTRUCTION IMPACT ON STUDENTS/STAFF	0	
(2) CONTINUAL IMPACT ON FMO	0	
(3) CONSTRUCTION IMPACT ON FMO	0	
(4) PROJECT PHYSICAL FEASIBILITY	0	
(5) PROJECT SUPPORT FEASIBILITY	0	
(6) COST FEASIBILITY	0	
(7) PROJECT START/FINISH FEASIBILITY	0	
<b>NOTES</b>		
Impact Score	0 through 4 (0= lowest, 4= highest)	
Feasibility Score	0 through 4 (0= lowest, 4= highest)	
Public Bid	0	
DSA	0	
Gafcon	0	
Proj. Manager	0	
In-House	0	
Contractor	0	
Join Projects	0	

## FPR - Facilities Project Request Scorecard - Facilities Committee

Project Title:

FC Member:

Possible Criteria Scores: 0-5 with 5 the highest score

REFER TO QUESTION	CRITERIA	CRITERIA SCORE	
<b>Benefits and Impacts</b>			
A	3,4,9 Direct/indirect benefit for students	0	
B	3,4,9 Direct/indirect impact on students (0 = Impact, 5 = No Impact)	0	
C	3,4,10 Benefit for other depts., services, programs	0	
D	3,4,10 Impact on other depts., services, programs (0 = Impact, 5 = No Impact)	0	
E	5 Mission Priority	0	
F	5 Strategic Goals	0	
<b>Project Support</b>			
G	6 Legal Mandate	0	
H	6 Program/College Accreditation Criteria	0	
I	6 Health/Safety/OSHA Priorities	0	
J	6 Critical Threshold of Educational & Support Services	0	
K	6 Essential Operations	0	
L	6 College or District Facilities Master Plan	0	
M	6 Sustainability Impact	0	
N	6 ADA Accessibility	0	
<b>Budget</b>			
O	12 Potential/Recommended funding source	0	
P	12 One-Time Cost Effectiveness	0	
Q	12 Projected Long-Term Effectiveness	0	
R	12 Effective Life-Cycle (Replacement Time)	0	
S	12 Cost Feasibility	0	
<b>Timeline</b>			
T	7,13 Urgent Need	0	
U	7,13 Project Start/Finish Feasibility	0	
		Project Total Score Out of %100	0
Comments:			
<b>Facilities Director Report</b>			
Director's (1)	Construction impact on students/staff (0 = Impact, 5 = No Impact)	0	
Director's (2)	Continual impact on FMO (0 = Impact, 5 = No Impact)	0	
Director's (3)	Construction impact on FMO (0 = Impact, 5 = No Impact)	0	
Director's (4)	Project Physical Feasibility	0	
Director's (5)	Project Support Feasibility	0	
Director's (6)	Cost Feasibility	0	
Director's (7)	Project Start/Finish Feasibility	0	
		Project Total Score Out of %100	0
Comments:			



# FACILITIES COMMITTEE AGENDA

1. Welcome/Introductions - Jennifer
2. Agenda – Additions/Deletions – Jennifer
3. Approve Meeting Minutes – Jennifer
4. 5-Minute Public Comment – Jennifer
5. Constituency Updates – Jennifer
  1. Admin Association
  2. Classified Senate
  3. Academic Senate
  4. ASGC
6. Nature Garden Signs – Bonnie Ripley
7. FPR update - Loren
8. **Construction Timeline and Impacts - Loren**
9. Constituency Group Time - Jennifer

DATE 11/1/23



GROSSMONT  
COLLEGE

# Math, Science & Career Tech Complex Phase 2-Building 36



GROSSMONT  
AND  
CUYAMACA  
COMMUNITY COLLEGES



GROSSMONT-CUYAMACA  
COMMUNITY COLLEGE DISTRICT

**COMING IN WINTER 2023**

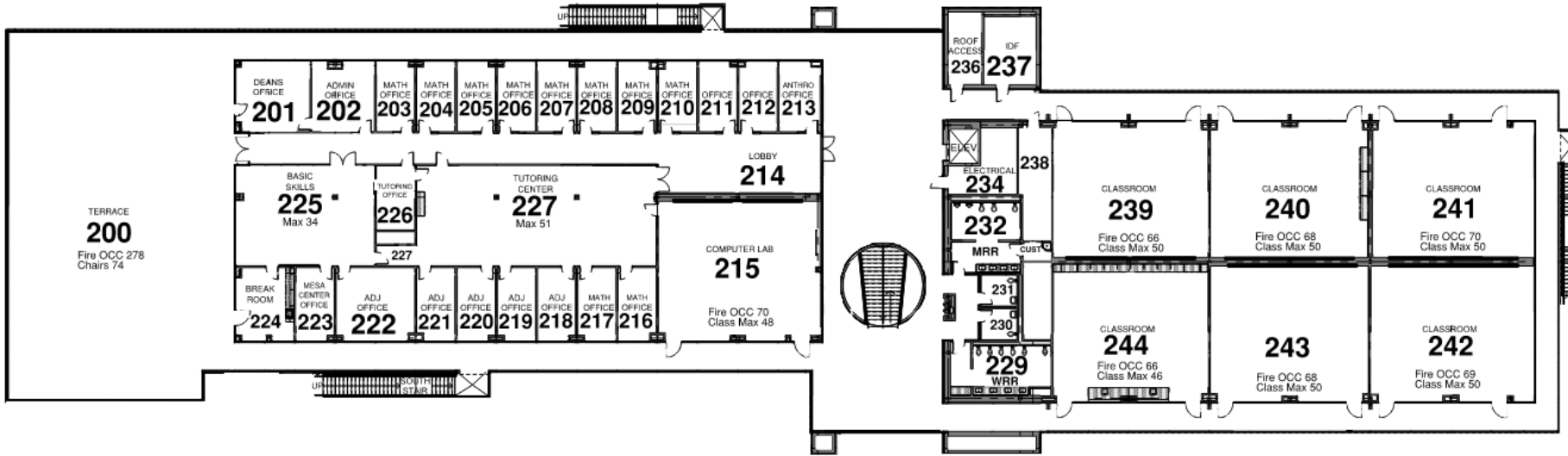


# Facilities Impact Update April 2023



Building 36 Math and Earth Science Complex



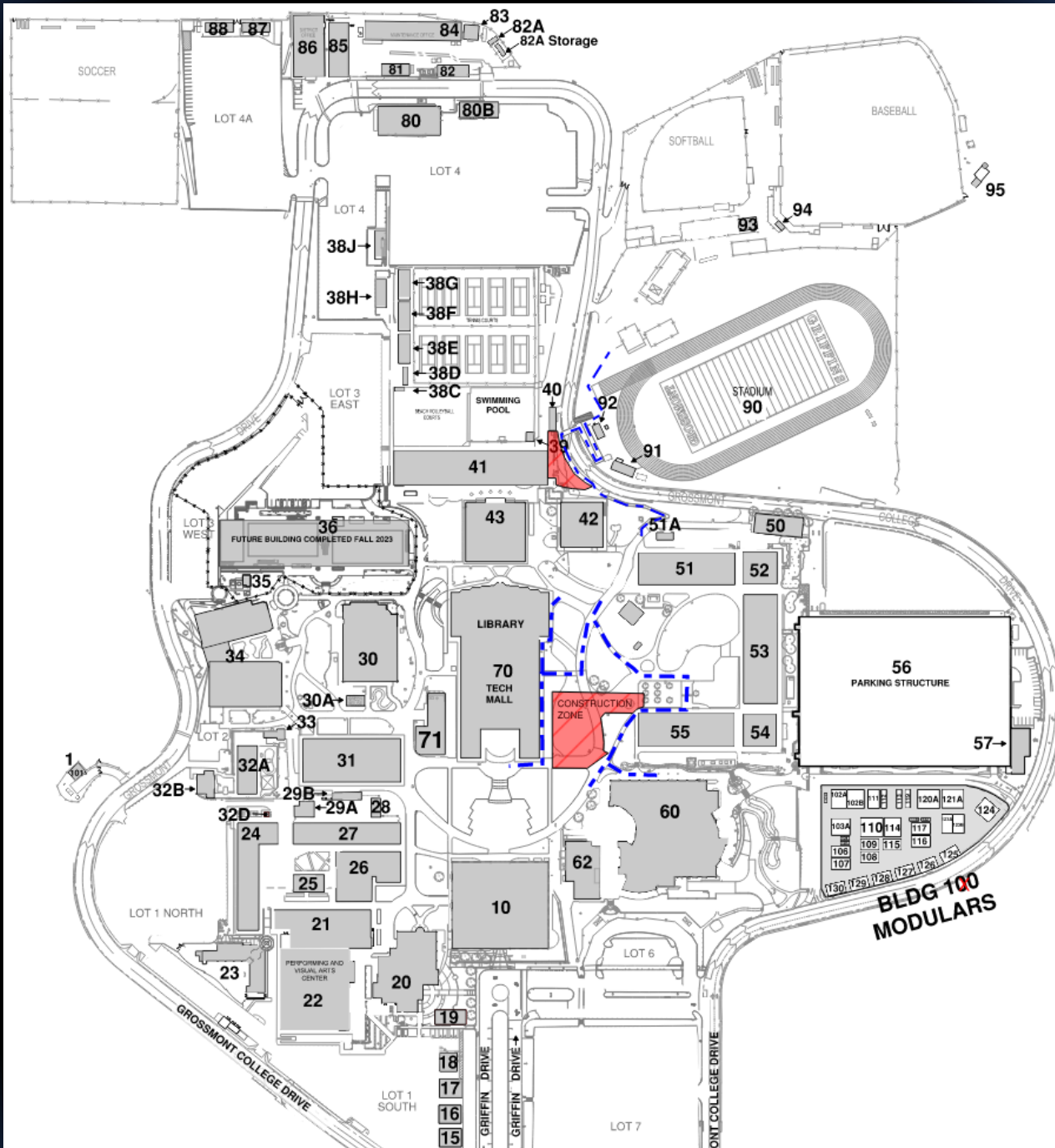


**BUILDING 36  
SECOND FLOOR**

Bldg 36 Floorplan



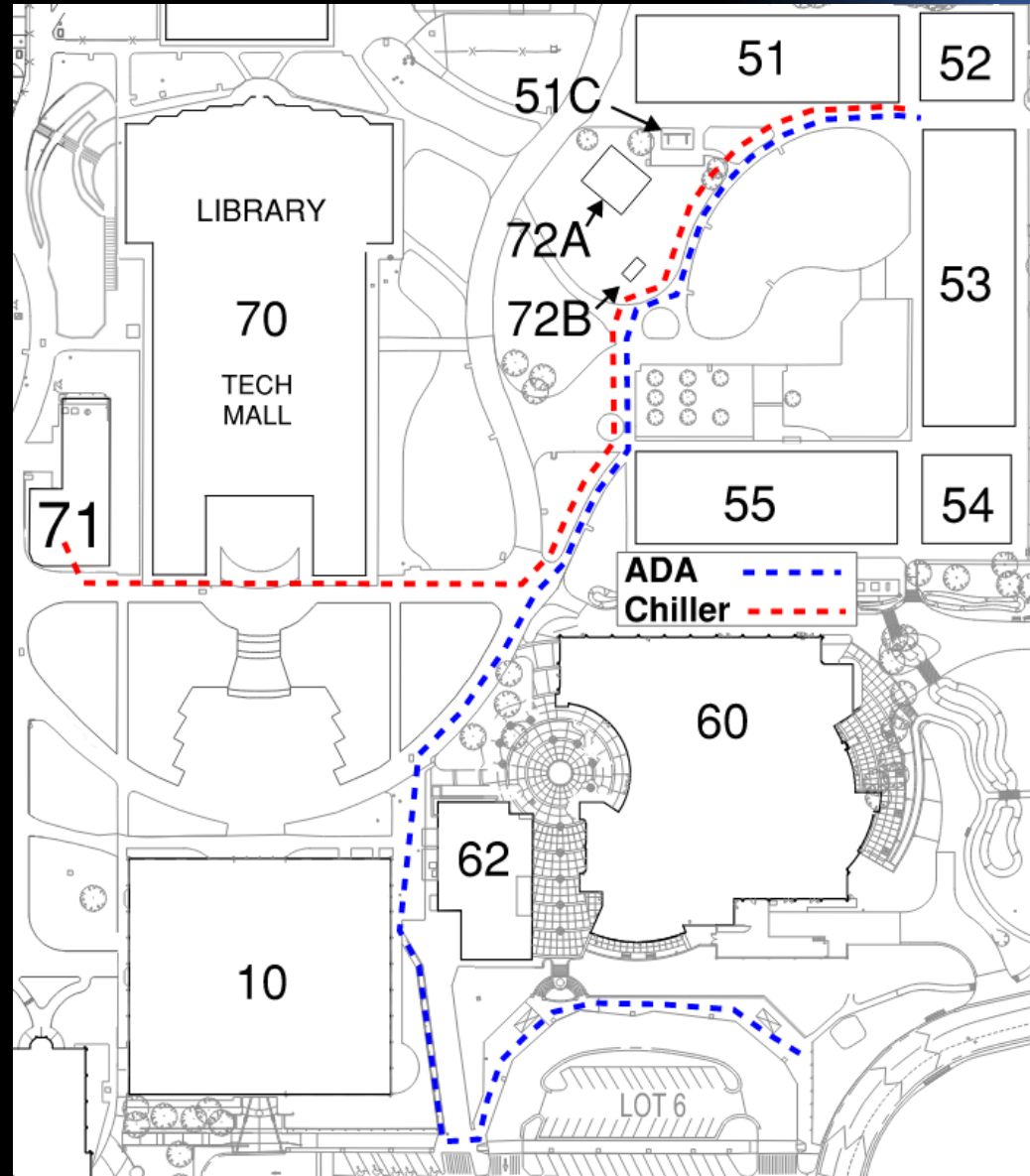
**BUILDING 36  
FIRST FLOOR**



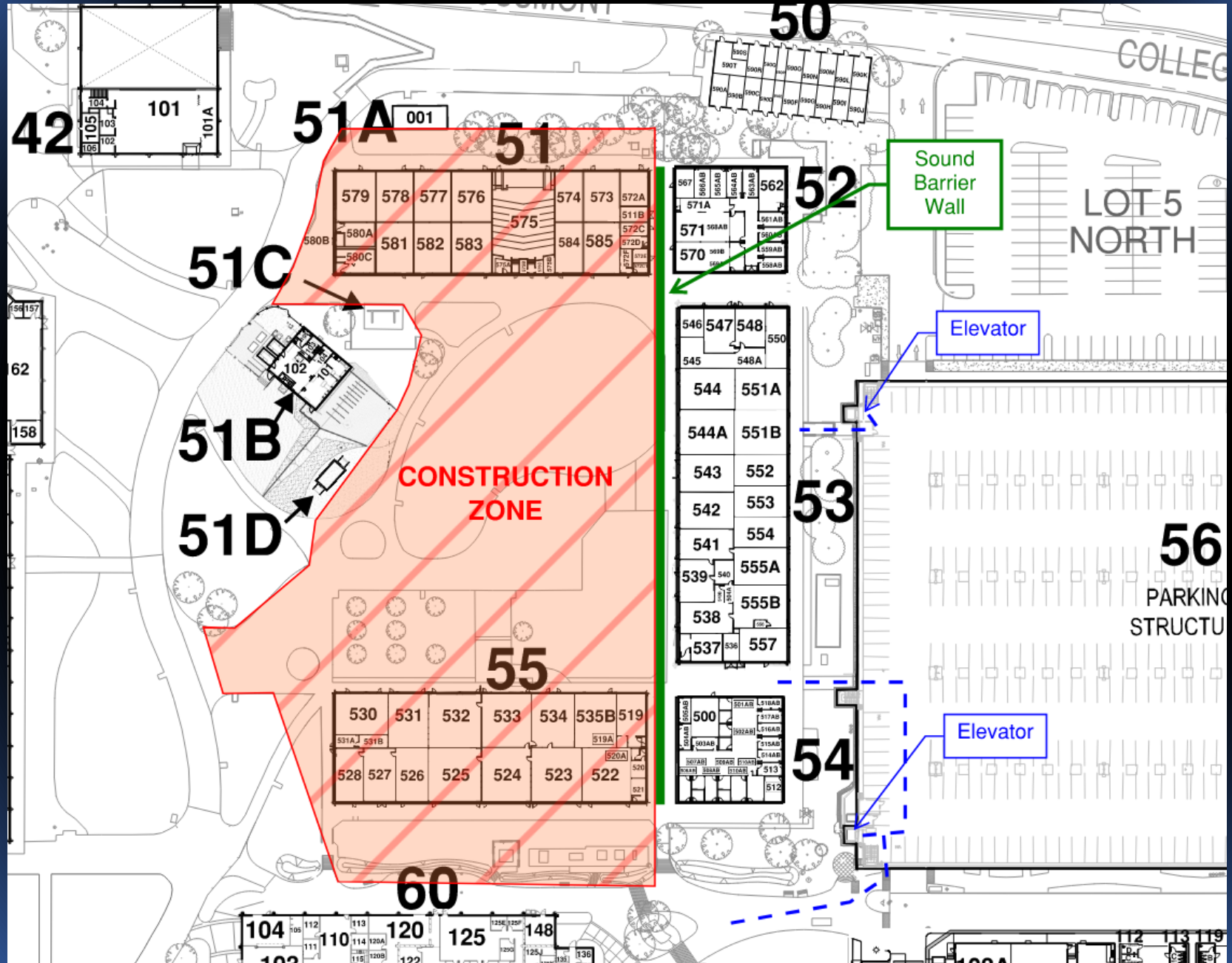
# Bldg 52-54 Project

## 23.24 Projects

- Main Chiller extension to service Bldgs 51, 53 and 55
- Cosmetic upgrades to Bldgs 52-54
- Fan coil replacements in Bldgs 53 and 54
- Data and Power rerouting to Bldg 50
- Power rerouting to Bldg 54
- Installation of new electrical PME switches for Bldgs 51 and 55
- ADA concrete upgrades from the 500 complex to the bus stop area



# Bldg 51/55 Renovation







# FACILITIES COMMITTEE AGENDA

1. Welcome/Introductions - Jennifer
2. Agenda – Additions/Deletions – Jennifer
3. Approve Meeting Minutes – Jennifer
4. 5-Minute Public Comment – Jennifer
5. Constituency Updates – Jennifer
  1. Admin Association
  2. Classified Senate
  3. Academic Senate
  4. ASGC
6. Nature Garden Signs – Bonnie Ripley
7. FPR update - Loren
8. Construction Timeline and Impacts - Loren
9. **Constituency Group Time - Jennifer**

DATE 11/1/23

# WELCOME TO THE FACILITIES COMMITTEE

The best way to contact FMO is by email

[Grossmont.FMO@gcccd.edu](mailto:Grossmont.FMO@gcccd.edu)

For maintenance, grounds, custodial and operation needs  
Colleen Parsons, Ryan Althaus, Bill Roessner, Pepe Levy, Joel Lopez

[Grossmont.restrooms@gcccd.edu](mailto:Grossmont.restrooms@gcccd.edu)

For restrooms that need attention

FMO phone is not monitored 24/7  
619-644-7594