

## Operating Protocol:

Acceptable Use of Security and Safety  
Cameras for the Protection of Students,  
Faculty, Staff, Visitors, and District Assets

# Operating Protocol: Acceptable Use of Security and Safety Cameras for the Protection of Students, Faculty, Staff, Visitors, and District Assets

## Summary

The Grossmont-Cuyamaca is committed to ensuring the protection of individual privacy rights in accordance with the District's Vision, Mission and Values, and a deep commitment to Diversity, Equity, Inclusion and Accessibility It aligns with all district policies and procedures along with local, state and federal laws. The intent of this these protocols is to provide guidance on the installation of safety and security cameras and equipment and the handling, viewing retention, dissemination and destruction of video records

## Introduction

The Grossmont-Cuyamaca Community College District ("District") is committed to enhancing the quality of education and well-being of the campus community by integrating the best practices of safety and security with technology contained in BP 3500 Campus Safety, which includes the Grossmont-Cuyamaca Community College District Campus Security Philosophy, for the safety and well-being of the District community. A critical component of a comprehensive security plan is utilizing Security and Safety Cameras. The purpose of these cameras is to promote and ensure the safety and security of students, staff, and District property by deterring crime and enhancing the District's emergency preparedness while protecting the privacy of our students and employees as appropriate.

Security and safety cameras will be used in a professional manner at all times in accordance with existing District Policies, including, BP 3410 Nondiscrimination, BP 3430 Prohibition of Harassment, and BP 3435 Discrimination and Harassment Complaints and Investigations, as well as applicable laws, including the Family Educational Rights & Privacy Act (FERPA), Educational Employment Relations Act (EERA) local, state and federal laws and regulations. Images and related data collected by cameras are the property of the District, and will be held in the strictest of confidence and retained for 30 days using the time-based auto deletion function through the camera system, before being destroyed by either the Associate Vice Chancellor District Facilities, Public Safety and Risk Management, or the Sheriff's Deputies. Destruction shall be formally documented and maintained in the Vice-Chancellor of Business Services Office in accordance with BP 3310 Records Retention and Destruction Policy.

This Operating Protocol **does not apply to:** webcams or other cameras for general use by District personnel; video equipment used for academic purposes; videotaping of athletic events for post-game review; videotaping of concerts, plays, and lectures; videotaped interviews of persons used for academic / instructional purposes; cameras installed in automated teller machines (ATMs); and/or the use of HyFlex cameras in the classroom for instructional purposes.

As discussed herein, security and safety cameras will only be installed where the District determines, based on operational needs and reported incidents, it is necessary to enhance the security and safety of people and property on District premises. They will not be installed in locations where individuals have a reasonable expectation of privacy. All cameras will be visible and appropriate signage will be placed in clearly visible areas on District property to ensure proper notification of their presence.

Security and Safety Cameras will record images and video only, and will confidentially store the recording on a remote device located in a secured location with controlled access. No cameras will utilize audio recording. The footage will only be viewed when necessary, as determined by the Associate Vice Chancellor of District Facilities, Public Safety and Risk Management to respond to an emergency or security event, investigate reasonable suspicions of crimes to persons or property, provide information to law enforcement to respond to emergency situations, when otherwise required by law, or in order to respond to a claim against the District, including a claim under the Government Claims Act (Cal. Govt. Code Section 810, *et seq.*).

## Definitions

- Following is the definition of key terms, as used within this operating protocol
1. **Security and Safety Camera:** a camera used for monitoring and recording public areas. A critical component of a comprehensive security and safety plan. The recording of public areas is intended to deter crime and assist in protecting the security and safety of students, faculty, staff and visitors and protect the property of the campus community.
  2. **Security Camera Monitoring:** the physical viewing of security and safety camera video images.
  3. **Security and Safety Camera Recording:** a digital recording of the video feed from a security and safety camera.
  4. **Security and Safety Systems:** any electronic service, software, or hardware directly supporting a deployed security camera.

## General Operating Principles

1. Security and safety camera systems will be used in a manner consistent with all existing District policies.
2. The Associate Vice Chancellor District Facilities, Public Safety and Risk Management will be responsible for ensuring the confidentiality of recordings, and approval of access to the recordings. The Associate Vice Chancellor District Facilities, Public Safety and Risk Management will ensure that the appropriate signage and notifications of the use of security and safety cameras, is clearly posted to inform students, faculty, staff and visitors they may be recorded while on District property.
3. The Associate Vice Chancellor District Facilities, Public Safety and Risk Management will ensure the security and safety system and equipment is maintained in good working order and that all storage devices (such as DIVARs, hard drives, or servers) that are not in active use are stored securely in a locked cabinet in a controlled-access area.
4. Any employee who knowingly or deliberately violates this policy will be subject to discipline in accordance with all bargaining agreements and employment contracts up to and including termination.

5. The Associate Vice Chancellor District Facilities, Public Safety and Risk Management will ensure the security and safety equipment password and/or access code is changed whenever the employment of an authorized user of the Security and Safety System is terminated, or is no longer in a position that requires them to access video recordings.
6. Anyone may anonymously inform the Associate Vice Chancellor District Facilities, Public Safety and Risk Management and/or the Vice Chancellor Human Resources of any employee who does not comply with this Operating Protocol Including a suspected privacy breach. All reports will be protected under BP 7700 Whistleblower Protection Policy.
7. The Associate Vice Chancellor District Facilities, Public Safety and Risk Management will ensure security and safety cameras and any related equipment is installed in accordance with these procedures and only in areas where they are necessary for security and safety reasons, where suitable conditions exist (exterior of structures, interior of structures, low light areas, and others areas of concern), and where it does not unreasonably invade the privacy rights of students, staff, or visitors.
8. If security and safety cameras or the security and safety system is adjustable by operators, this function will be restricted to the Associate Vice Chancellor District Facilities Public Safety and Risk Management or the law enforcement so that operators cannot adjust or manipulate the cameras to view spaces that are not intended to be covered by the Security and Safety System.
9. Under no circumstances will security and safety equipment be directed at any locations where persons have a reasonable expectation of privacy.
10. The Associate Vice Chancellor District Facilities Public Safety and Risk Management will ensure that no attempt will be made to alter any part of a security and safety camera recording. The Bosch system uses embedded Watermarks to protect against recordings being altered.
11. The Associate Vice Chancellor District Facilities Public Safety and Risk Management will ensure that old or inoperable security and safety system storage devices are wiped clean and rendered unreadable and unserviceable before disposal. They will maintain a written record describing the date, method and location of the disposal in compliance with BP 3310 Records Retention and Destruction Management Policy.
12. When an incident is reported, a review of recorded information, by a law enforcement official, will generally occur with approval of the Associate Vice Chancellor of District Facilities, Public Safety and Risk Management. Security and safety system evidence will be stored securely until law enforcement responds. When a recording is requested as evidence, the name of the investigating officer and date and time of possession will be recorded and retained in a log book, which will be retained in compliance with BP 3310 Records Retention and Destruction Management Policy.

13. Any use of the security and safety camera recordings, other than which is detailed in this Operating Protocol, is strictly prohibited and is subject to disciplinary action in accordance with all bargaining agreements and employment contracts up to and including termination.
14. Use of recordings from safety and security cameras will comply with the Memorandums of Understanding (MOUs) executed with the Bargaining Units at Grossmont-Cuyamaca Community College District.

### **Responsibility for this Operating Protocol**

The Associate Vice Chancellor District Facilities, Public Safety and Risk Management is responsible for the security and safety cameras and systems, and implementation of this Operating Protocol. The District's Associate Vice Chancellor District Facilities, Public Safety, and Risk Management in conjunction with contracted law enforcement agencies, have the responsibility to select, coordinate, operate, manage, and monitor all campus security and safety camera systems. Installation of security and safety cameras on District property without prior approval of the Vice Chancellor Business Services is strictly prohibited. In the event that an unauthorized camera is found, it will be removed with notice to the college president.

All existing security and safety cameras and systems must comply with this policy. Unapproved or nonconforming devices will be removed. The Associate Vice Chancellor District Facilities, Public Safety and Risk Management working with the Vice Chancellors of Business Services and Human Resources, will be responsible for the creation, maintenance, and review of the District's strategy for the procurement, deployment, and use of security and safety cameras, including:

1. Establishment of the District standards for security and safety system devices and services and for authorizing the placement of all security cameras.
2. Requesting the purchase of any new or replacement security components or camera systems.
3. Reviewing existing security and safety systems and installations and identifying required changes to bring these into compliance with the District standards.
4. Updating the policy and procedures for the use of security and safety cameras and systems.
5. Ensure all requests to add cameras to new locations is reviewed by Human Resources, who will be responsible for ensuring that the District is acting in accordance with the Memorandums of Understanding (MOU) with collective bargaining groups and acting in accordance with laws governing employee rights, including but not limited to the Educational Employment Relations Act ("EERA") of 1976.

The Associate Vice Chancellor District Facilities, Public Safety and Risk Management will be responsible for addressing issues and concerns about the use of security and safety cameras and systems. If the Associate Vice Chancellor District Facilities, Public Safety and Risk Management is unable to satisfactorily resolve an issue or concern, then the Vice Chancellor of Business Services will review the details of the concern, and make a final decision.

Copies of security and safety camera recordings and/or security and safety system information will be released internally or to law enforcement personnel only as authorized by the Vice Chancellor Business Services and in accordance with state and federal law, including the Family Educational Rights and Privacy Act ("FERPA"). Recordings will not be released to any other party except pursuant to a valid subpoena or court order, and only after being reviewed by the District's Legal Counsel prior to the release of any records.

### **Security and Safety Camera Placement**

Security and safety camera placement locations and operation typically will be limited to visual access of areas where there is no reasonable expectation of privacy. Use of the security and safety system for the purpose of monitoring work areas, staff areas, or sensitive areas such as shared offices, will not be permitted unless approved by the Vice Chancellor of Human Resources in alignment with the spirit and intent of this Protocol, which includes the prevention and deterrence of dangerous or illegal activity and the enhancement of security and safety.

Monitoring private areas including bathrooms, shower areas, locker/changing rooms, or other areas where people may change clothes, and private offices, is prohibited.

The locations where cameras are installed may be restricted access sites such as a departmental computer lab; however, these locations are not places where a person has a reasonable expectation of privacy. Cameras will be located so that personal privacy is maximized.

The view of a camera must not violate the standard of a reasonable expectation of privacy.

### **Storage and Retention of Recordings**

Logs will be kept of all instances of access to, use, or release of any stored copies of recordings to provide for a proper audit trail.

No attempt shall be made to alter any part of any recording other than selecting specific incidents or periods of time to be retained.

All recorded information shall be automatically destroyed after thirty (30) days, except information specifically awaiting review by law enforcement agencies, information retained as evidence, information that has been duplicated for use under civil or criminal subpoena or court order or as required by law or this Operating Protocol.

### **Requests for Installation of Additional Cameras**

Individual departments, programs, or campus organizations requesting security and safety cameras shall submit a written request to their appropriate Director/Dean describing the proposed location of device(s) justifying the need for the proposed installation. If the Director/Dean approves the request it will follow the campus process for the approval by the campus President. If the campus President approves the request, it will be forwarded to the Associate Vice Chancellor District Facilities, Public Safety and Risk Management and the Vice Chancellor of Human Resources to verify alignment with the MOUs with labor groups before final approval.

DRAFT

## ATTACHMENTS

District Incidents Statistics March 2023 through March 2024

BP 3500 Campus Safety

AP 3500 Campus Safety-Proposed

BP 3501 Campus Security and Access

AP 3501 Campus Security and Access-Proposed

Campus Maps of Current Cameras

Grossmont

Cuyamaca

Campus Maps of Proposed Non-Instructional Cameras on Campuses Phase One

Grossmont

Cuyamaca

Campus Maps of Proposed Non-Instructional Cameras on Campuses Phase Two

Grossmont

Cuyamaca

Campus Locations of HyFlex Instructional Cameras

Grossmont

Cuyamaca

MOU between GCCCD and AFT Guild Local 1931

MOU between GCCCD and AA

MOU between GCCCD and CSEA and its Chapter 707



District Incidents Statistics  
March 2023 Through March 2024

## Incidents Statistics for the Period of March 2023 thru March 2024 Gathered by the San Diego County Sheriffs & the GCCCD Department of Public Safety

Sheriff's Stats for the hours of M-F 8am-6pm		CAPS Stats 24 hours/7 days a week		Total of Combined Stats
Narcotics	2	Narcotics		2
Incomplete 911 calls	12	Incomplete 911 calls	47	59
Suspicious Person	74	Suspicious Person- referred to SDSO when possible	173	247
Disturbances	44	Disturbances	39	83
MH Counselor calls	7	MH Counselor calls- referred to SDSO when possible	Unknown**	7
Trespass	3	Trespass	Unknown**	3
Medical	39	Medical	31	70
Theft	24	Theft -referred to SDSO	2	26
Alarms	24	Alarms	1195	1219
Traffic	38	Traffic	5	43
Assaults	8	Assaults- referred to SDSO	1	9
TRO	4	TRO- referred to SDSO	5	9
Missing Persons BOLO	4	Missing Persons BOLO- referred to SDSO when possible	3	7

- **Narcotics** include: found narcotics- does NOT include violations of student conduct or employee conduct
- **Incomplete 911 calls**- anything that made it to a deputy to investigate
- **Suspicious Person** includes: Person, vehicle, transient calls, welfare checks or requests, including from student affairs
- **Disturbances** include: arguments, preserve the peace, protestors, ordinance violations such as smoking, skateboarding.
- **Mental health counselor calls**: directly from MH counselors, include PERT assists, suicide calls and evaluations.
- **Trespassing** includes: complaints of transients trespassing. \*\*CAPS emails in regards to trespassers at night. However, we do not have a specific code in our reporting software for this. As an example, when Sam was attacked, it did not go in as a “trespass”. So it is impossible to know a number but we encounter trespassing about 2-4 times per week.
- **Medical** calls note: we do not get sent to all medical. After hours, CAPS only knows about medical calls if they call from a campus phone. Not if they use a cell phone.
- **Theft** includes: grand theft, burglaries, vandalism of buildings or vehicles.
- **Alarms** include: assisting caps with dangerous intrusion alarms and fire alarms when available
- **Traffic** includes: reckless driving, DUI’s, accidents, hit and runs, traffic signal issues, traffic stops
- **Assaults** include: all categories such as rape, assault, battery, etc. Included displays of threats and harassment
- **TRO** – restraining order requests, questions, assistance and enforcement- we do not always track these clearly.
- **Missing person** includes: BOLOs, dangerous BOLO’s or sometimes people at risk. Many parents asking for help looking for their kids.

# BP 3500 Campus Safety

## **BP 3500      Campus Safety**

Reference:            ***Education Code 67380(a)(4)***

Adoption Date:    August 21, 2001

Updated: October 16, 2018

---

The Grossmont-Cuyamaca Community College District (District) Governing Board is committed to a safe and secure District work and learning environment. To that end, the Chancellor shall establish a campus safety plan and ensure that it is posted or otherwise made available to District students.

The Chancellor shall ensure that the campus safety plan includes availability and location of security personnel, methods for summoning assistance of security personnel, any special safeguards that have been established, any actions taken in the preceding 18 months to increase safety, and any changes in safety precautions to be made during the next 24 months.

The attached District *Campus Security Philosophy* is a guideline for integrating the best practices of safety and security.

## **Grossmont-Cuyamaca Community College District Campus Security Philosophy**

The Grossmont-Cuyamaca Community College District (GCCCD) is fully committed to enhancing the quality of life of the campus community by integrating the best practices for safety and security. The District shall establish a safety philosophy with the primary objective of providing a safe and healthy working environment for all District employees, students and the public.

Implementation components:

1. Utilize proactive strategies such as Crime Prevention through Environmental Design (CPTED) to improve safety and deter crime.
2. Strive to protect individual privacy rights.
3. Consider campus climate conditions and plan for a comforting and welcoming environment.
4. Refurbish and repair buildings to address student and district employee safety and access standards.
5. Mitigate human and economic losses from personal injury and property damage.
6. Make training available to all employees to provide a first line of response for the safety of themselves and their neighbors in the event of violence, natural disaster, medical or psychiatric emergency using strategies for violence prevention. The training will emphasize high expectations for conduct, responsible behavior and civility.
7. Encourage all employees, students and the public to be aware of their surroundings while on District property, and refer questions or concerns to the Public Safety Department.

The GCCCD is committed to our values of diversity, equity and inclusion and to support all our students and employees, regardless of background, race, ethnicity, heritage, national origin, immigration status, religion, age, gender, gender identity, sexual orientation or ability. This is in keeping with our District and Colleges value statement to cultivate a student-centered, culture of excellence, trust, stewardship, and service.

GCCCD Public Safety and Emergency Preparedness Council assists with analysis, recommendations and communication regarding this philosophy. Further information regarding safety and security is available in BP and AP 3500 and 3501.

*This philosophy is a component of BP 3500.*

# AP 3500 Campus Safety-Proposed

## AP 3500 Campus Safety DRAFT

Reference: Education Code Sections 212, 67380, 87014;  
Penal Code Section 245;  
20 U.S. Code Sections 1232g, 1292(f);  
34 Code of Federal Regulations 668.46;  
34 Code of Federal Regulations 99.31(a)(13),(14); and  
Campus Security Act of 1990

Date Issued: December 3, 2008

Revised: ~~October 16, 2018~~ April 1, 2024

The Grossmont-Cuyamaca Community College District (District) campus safety plan is available for students in the Public Safety Annual Security Report on the District website (handbook or brochure?).

-The District Public Safety Department prepares and annually updates a report of all occurrences reported to District Public Safety of, and arrests for, crimes that are committed on campuses and that involve violence, hate violence, theft or destruction of property, illegal drugs, or alcohol intoxication ~~which are reported to the District Public Safety Department,~~ and of all occurrences of noncriminal acts of hate violence reported to campus authorities. A written report will be submitted to the Board. Written records of noncriminal acts of hate violence shall include, at a minimum, a description of the act of hate violence, the victim characteristics, and offender characteristics, if known.

Education Code 67380 defines "hate violence" as defined by Education Code 67380 is-"any act of intimidation or physical harassment, physical force or physical violence, or the threat of physical force or physical violence, that is directed against any person or group of persons or the property of any person or group of persons because of their ethnicity, race, national origin, sex, sexual orientation, gender identity, gender expression, disability, or political or religious beliefs of that person or group identity or association with one or more of the protected categories.

-For purposes of reporting under the Clery Act, "hate crimes" include domestic violence, dating violence, and stalking. Also see BP 3410 Nondiscrimination

These changes are to bring the Administrative Procedure in line with the legally required language and the recommendations from the Community College League of California (CCLC), which issues periodic updated to Policies and Procedures based on the recommendation of AALRR Law Firm.

# BP 3501 Campus Security and Access



**BP 3501      Campus Security and Access**

Reference:      ***34 Code of Federal Regulations Part 668.46(b)(3)***

Adoption Date:    April 17, 2012

Reviewed: May 16, 2017

---

The Chancellor shall establish procedures for security and access to Grossmont-Cuyamaca Community College District facilities.

# AP 3501 Campus Security and Access-Proposed

## AP 3501 Campus Security and Access

Reference: 34 Code of Federal Regulations Section 668.46(b)(3)

~~34 Code of Federal Regulations Section 668.46(b)(3)~~

Date Issued: April 9, 2012  
~~2017~~

Updated: April 2, 2024 ~~May 16,~~

During business hours, the Grossmont-Cuyamaca Community College District (District) will be open to students, parents, employees, contractors, guests, and invitees. Business hours vary during different times of the year and the District has the right to close areas as needed. All District facilities and grounds are closed between the hours of 11:00 p.m. and 5:00 a.m. each day. After hours visitors must check in with the District Public Safety Office. During non-business hours access to all District facilities is by key, and/or alarm code, if issued, or by admittance via the District Public Safety Office. In the case of periods of extended closing, the District will admit only those with Prior written approval to all facilities.

Emergencies may necessitate changes or alterations to any posted schedules of operation. During an emergency response closure, the District Public Safety Department will provide access as approved by the Chancellor or designee.

Areas that are revealed as problematic will have regular periodic surveys and may be monitored by security and safety systems. Administrators from Public Safety, Law Enforcement, Human Resources and others as needed, may review the information gathered. These surveys examine security issues such as landscaping, locks, alarms, lighting, and mishaps, unfortunate events and communications.

~~After hours visitors must check in with the District Public Safety office.~~ The Public Safety, Facilities, and Risk Management Information Systems and Human Resources Departments will meet to review consider security issues such as locks, alarms, lighting, landscaping, and communications, security and safety, and access concerns and work to resolve these issues, as needed. In addition, the Districtwide Public Safety and Emergency Preparedness Council shall meet as needed to discuss campus security and access. The atmosphere of community at the District campus must be one of honesty, acceptance of responsibility and willingness to represent clearly and accurately oneself and one's activities. While on any property owned or occupied by the District, Employees and students must identify themselves to Campus and Parking Services personnel when requested, by showing a photo identification card.

## Campus Maps of Current Cameras

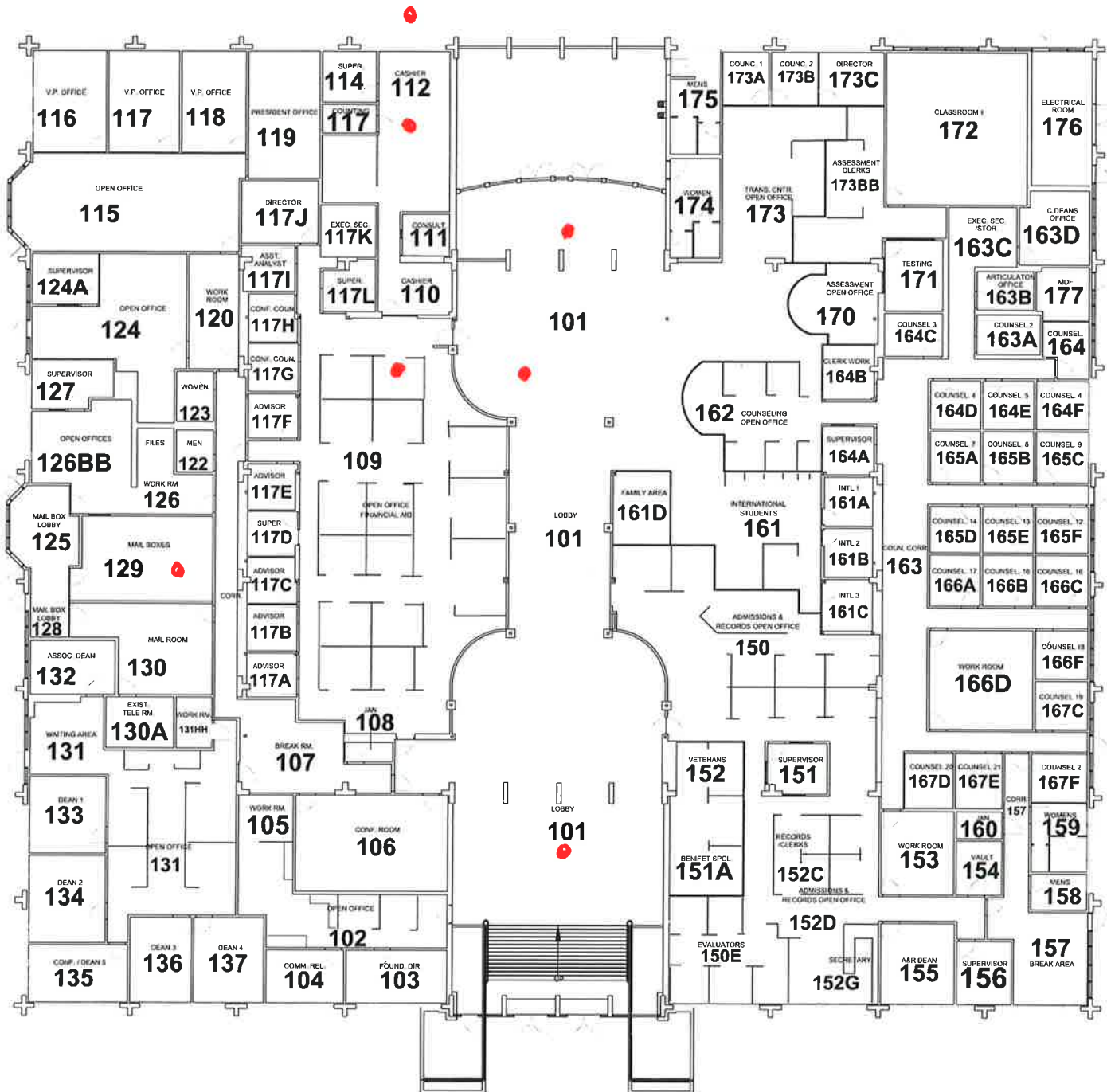
- Grossmont
- Cuyamaca

## Legend

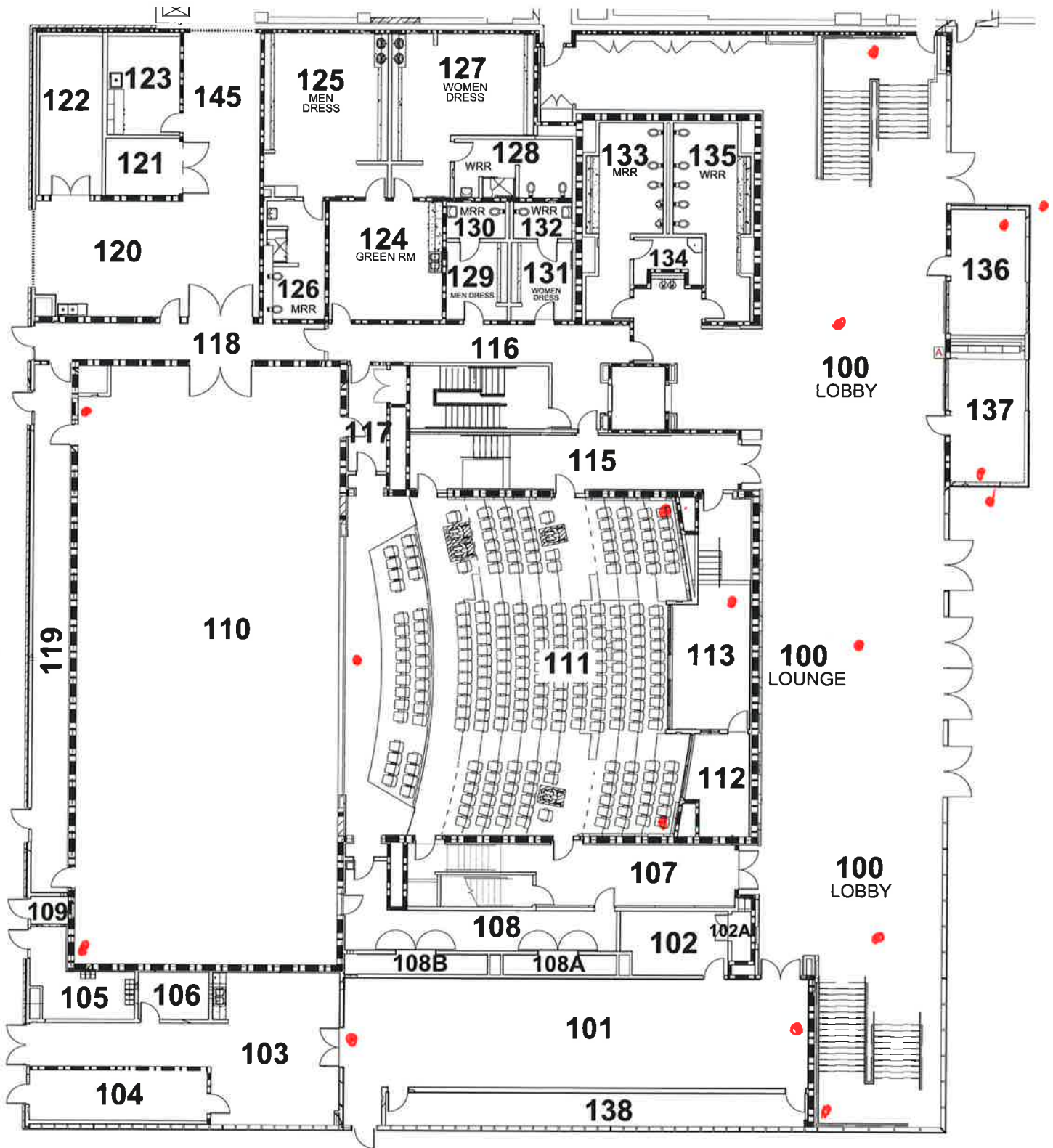
- Indicates Instructional Program Camera
- Indicates Infrastructure Only For a Camera
- Indicates Security Camera

Note: No Hyflex Cameras are shown

Grossmont College Building 10  
 (7) Security Cameras

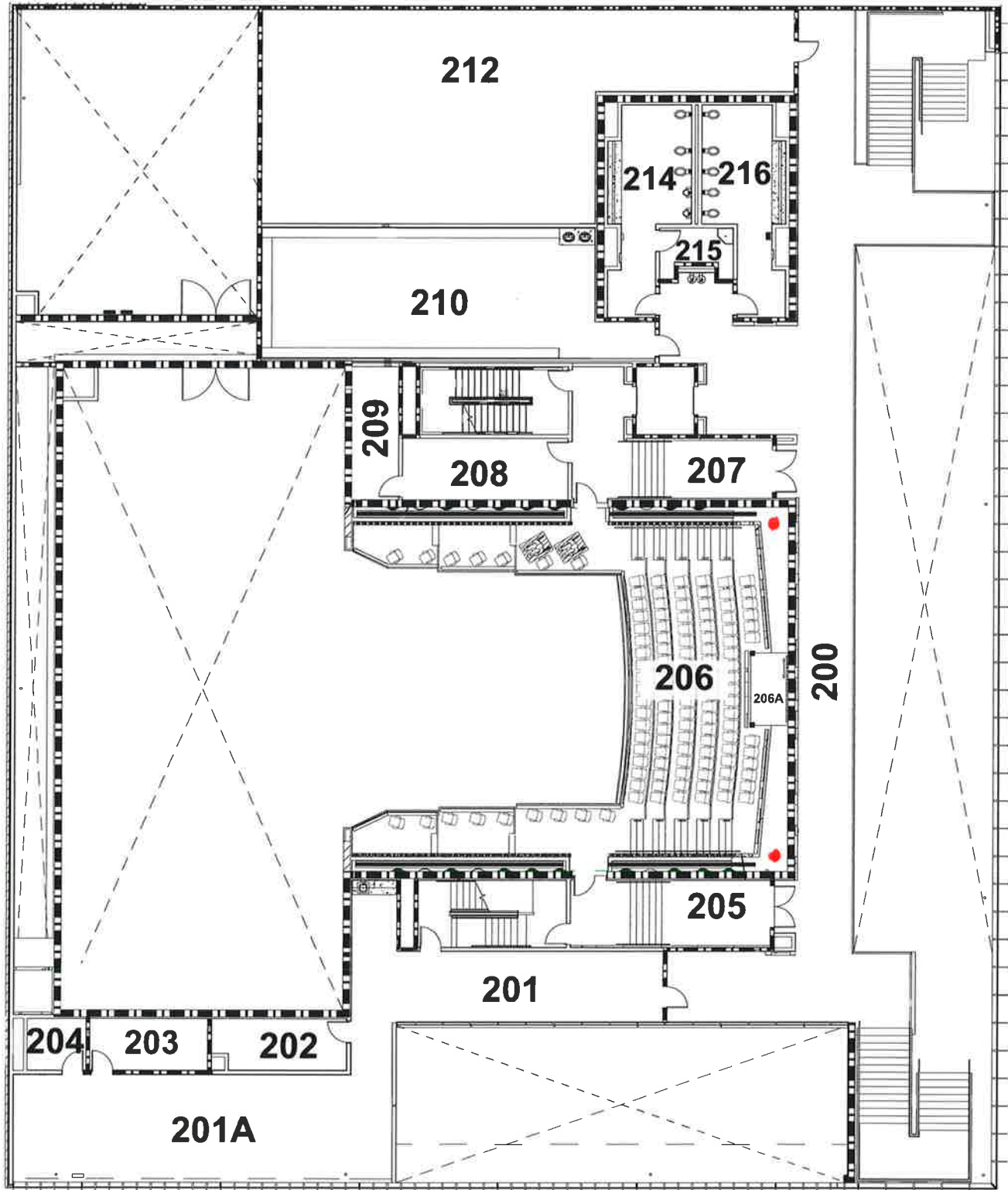


Grossmont College Building 22 - First Floor  
(17) Security Cameras



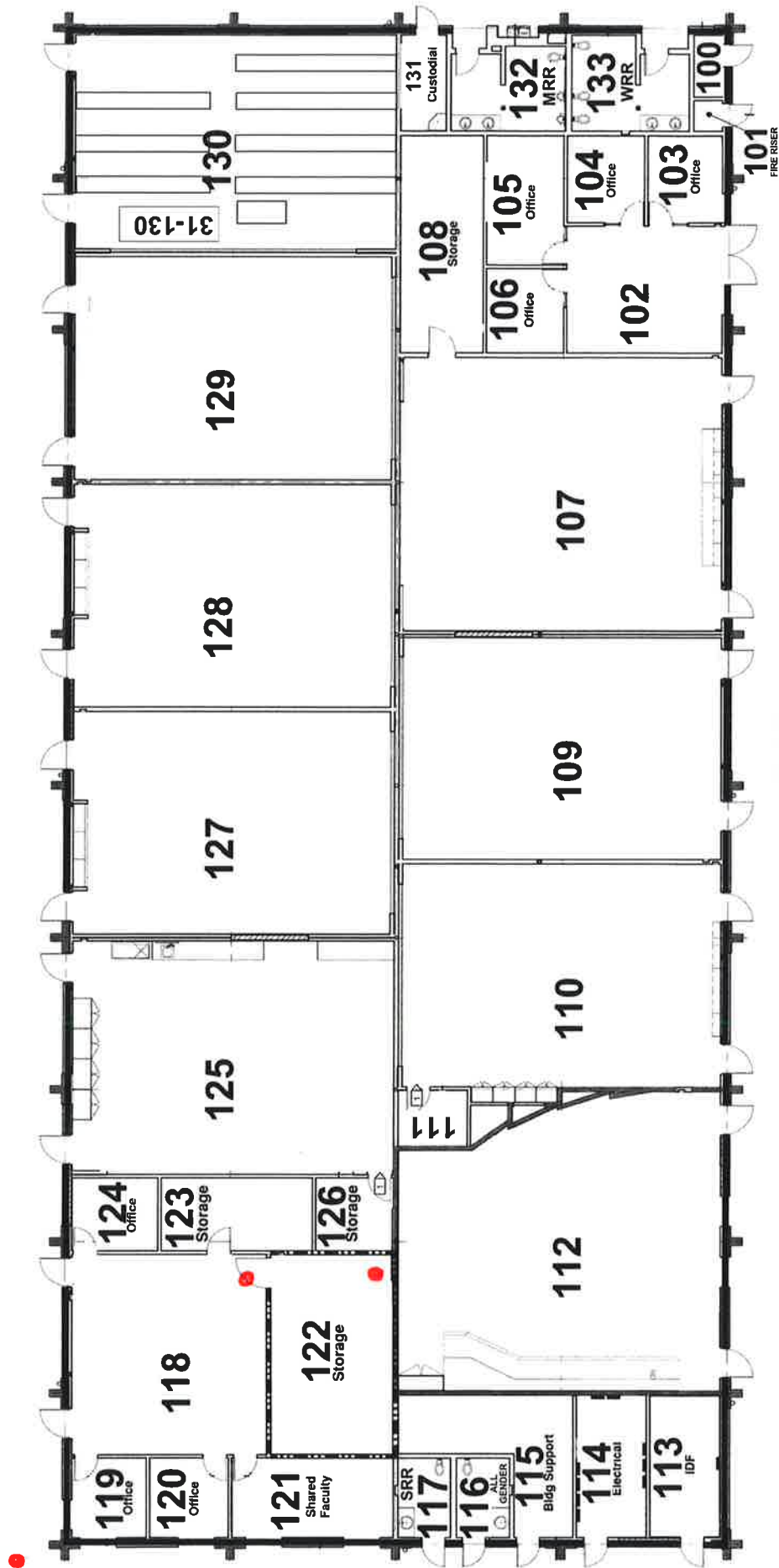
PVAC  
BUILDING 22  
FIRST FLOOR

Grossmont College Building 22 - 2nd Floor  
(2) Security Cameras

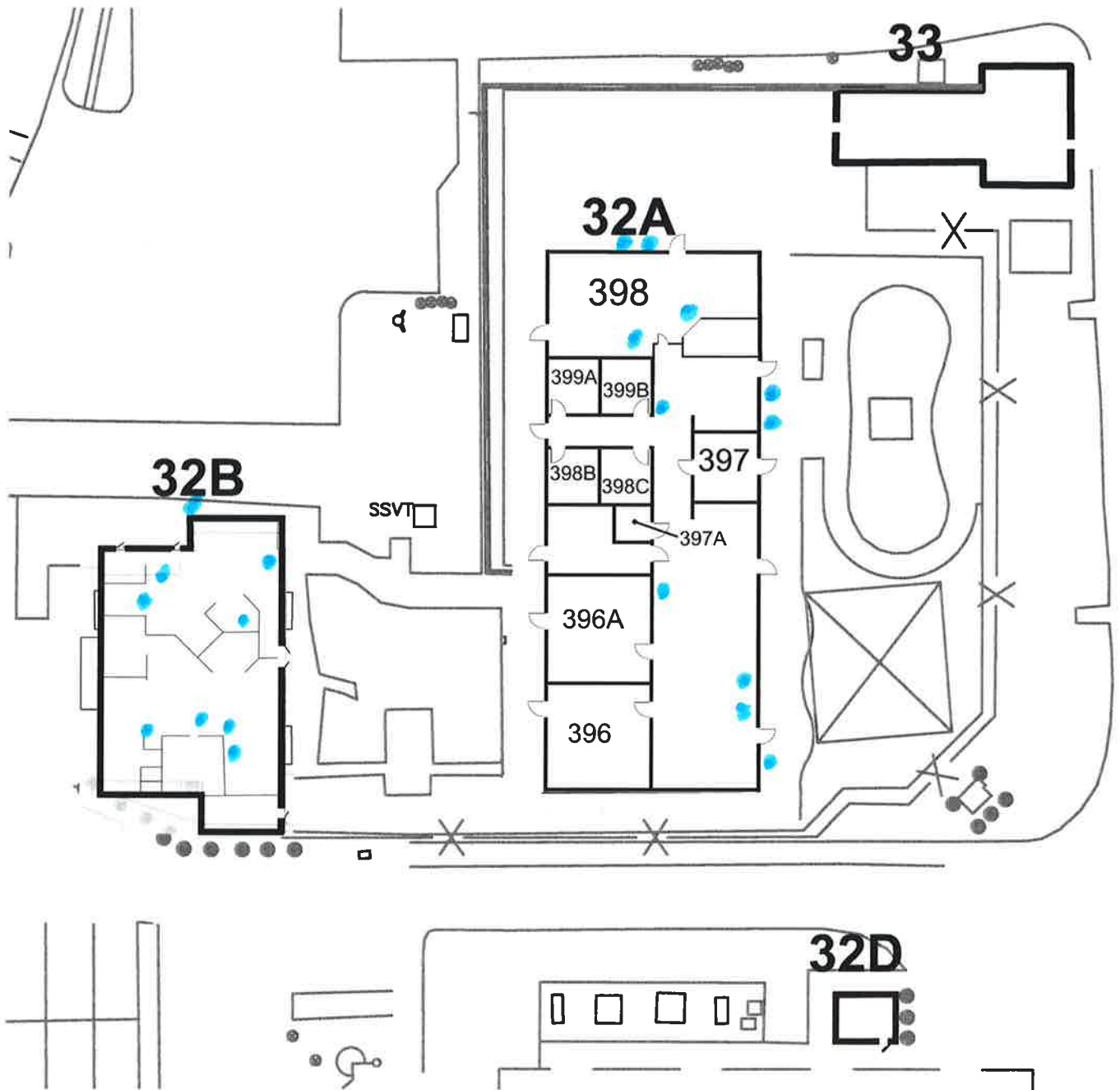


PVAC  
BUILDING 22  
SECOND FLOOR





Grossmont College Building 32A & 32B  
(20) Instructional Program Cameras

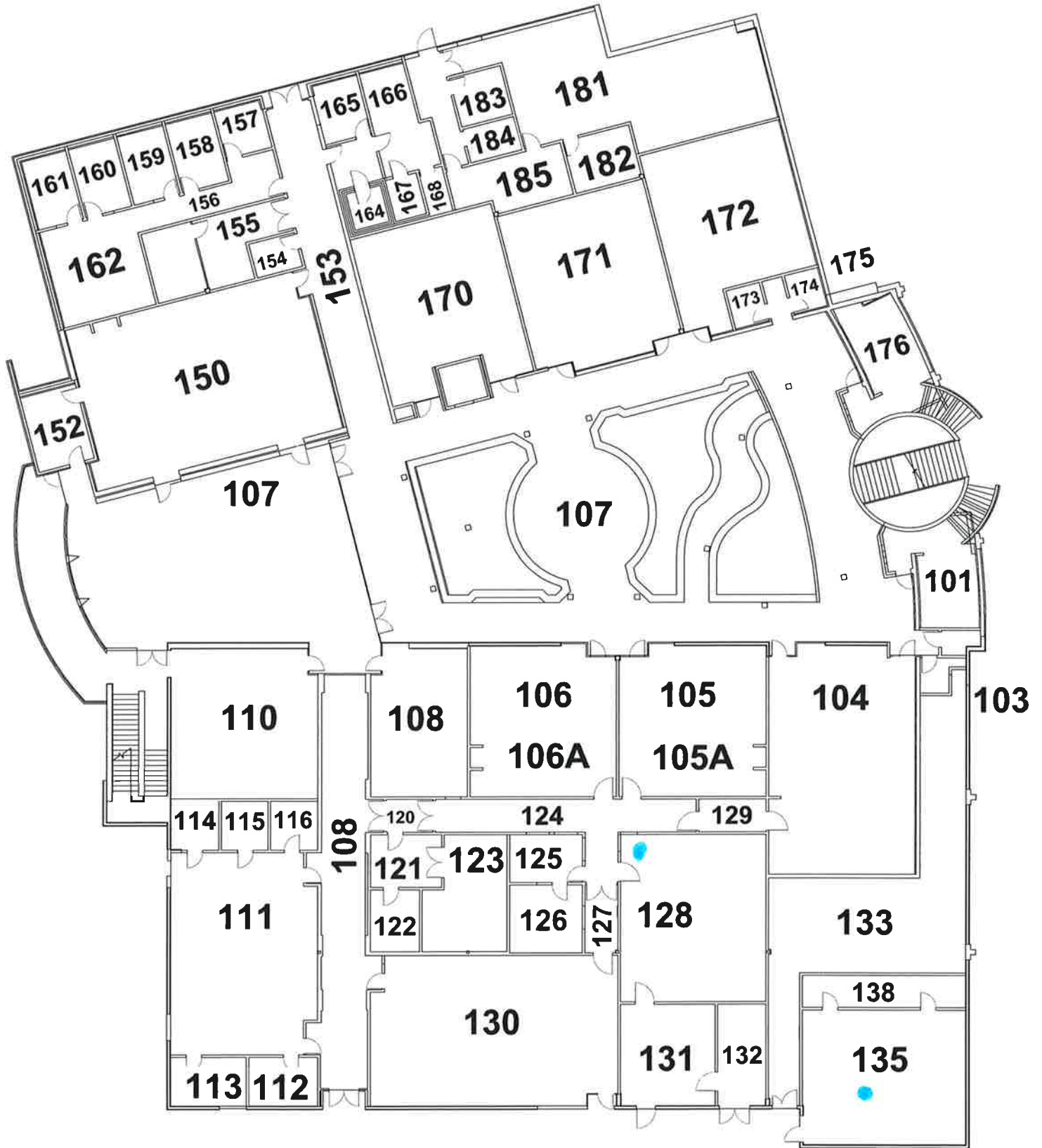


● instructional camera

BUILDING 32A,  
32B, 32D, 33

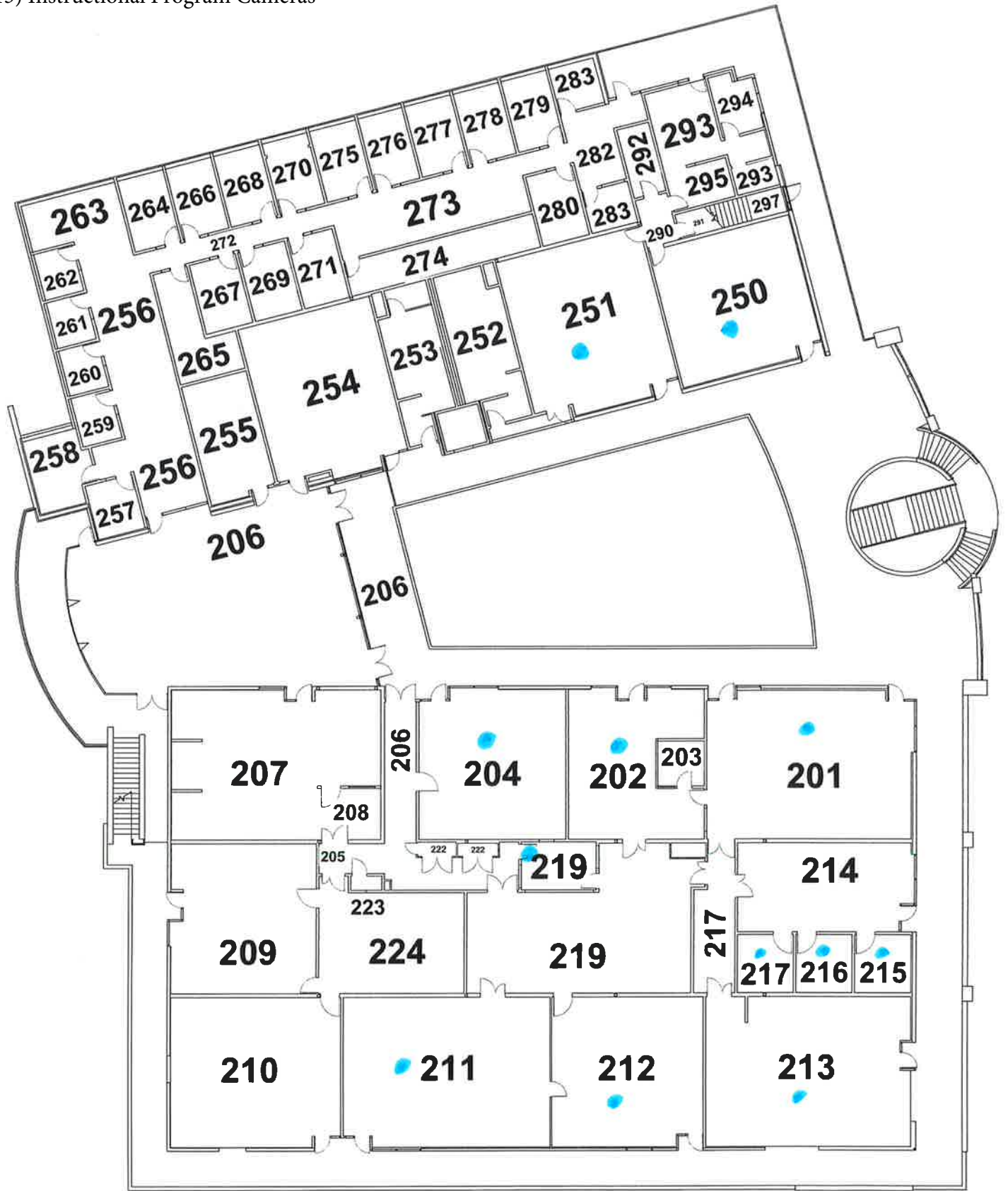
Grossmont College Building 34 - First Floor

(2) Instructional Program Cameras



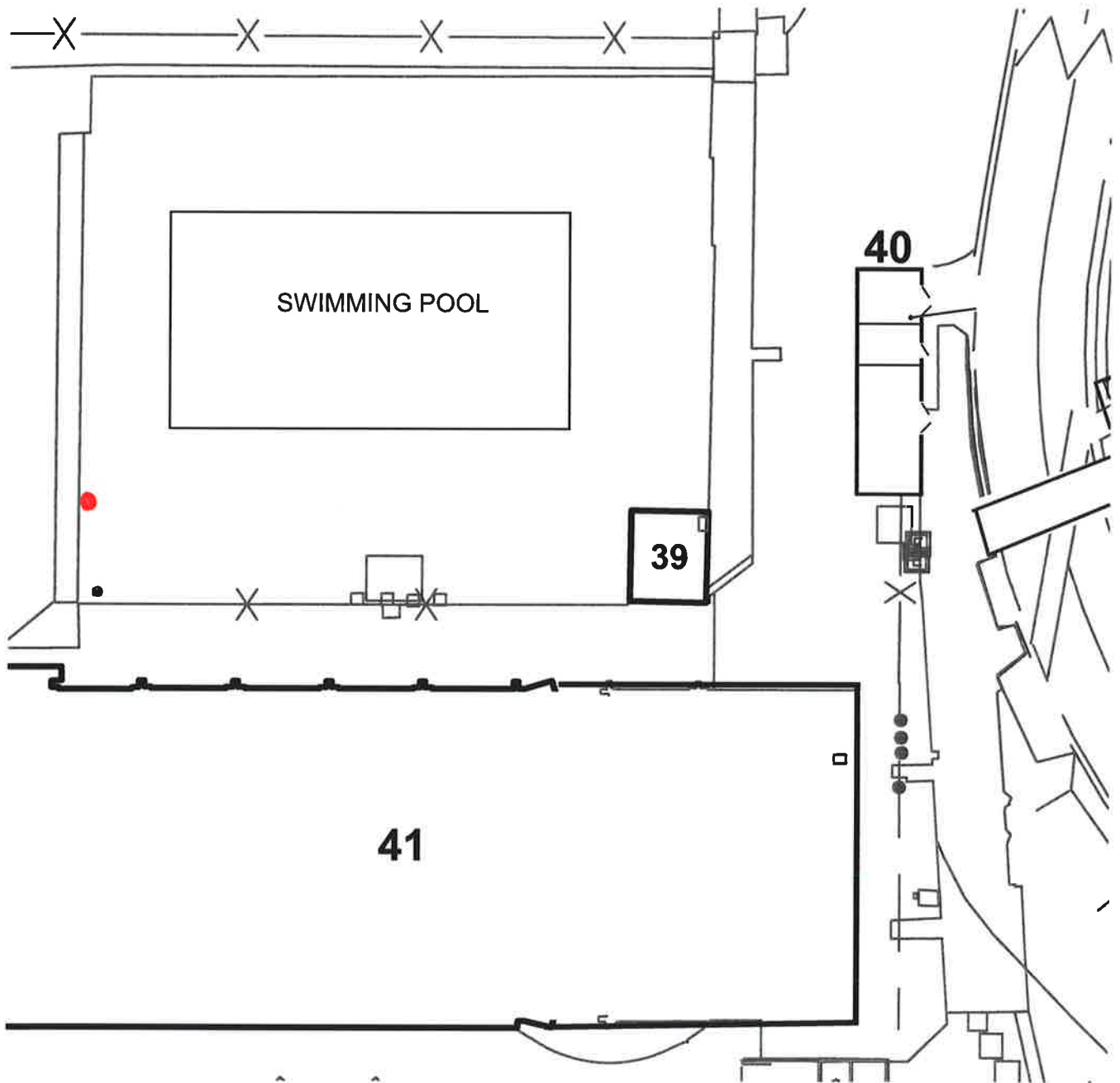
BUILDING 34  
FIRST FLOOR

Grossmont College Building 34 - Second Floor  
(13) Instructional Program Cameras



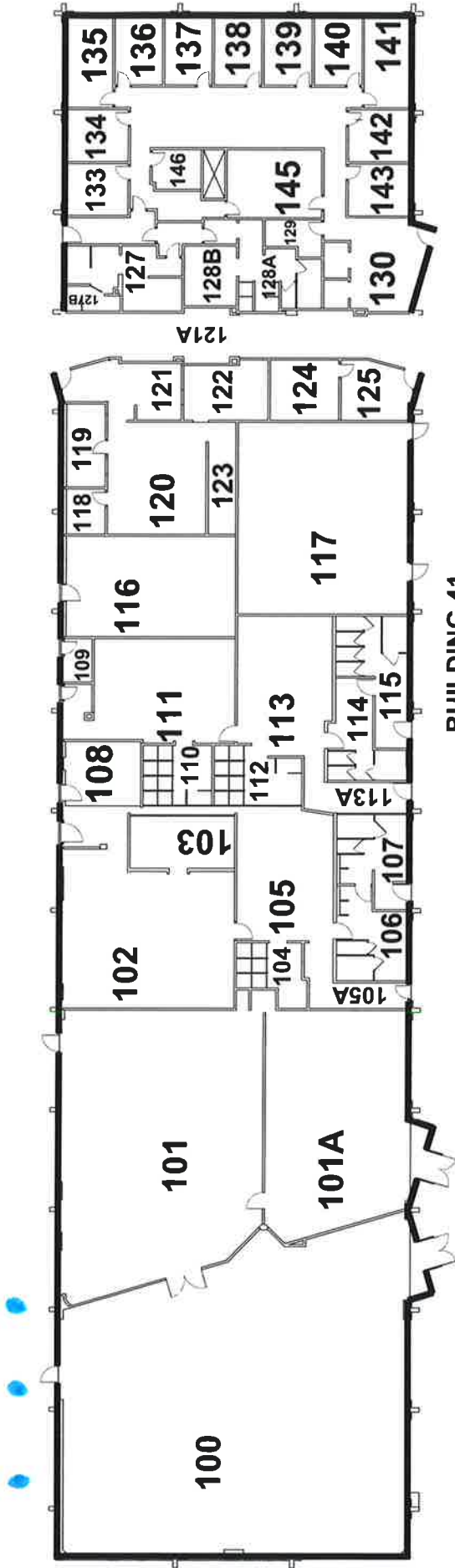
**BUILDING 34  
SECOND FLOOR**

Grossmont College Building 39  
(1) Security Camera

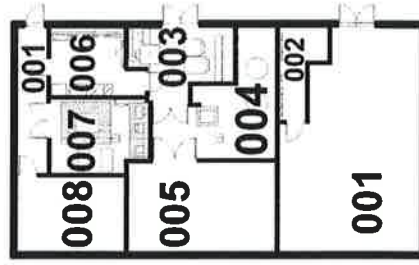


**BLDG 39 POOL HOUSE,  
BLDG 40 POOL EQUIPMENT,  
SWIMMING POOL**

Grossmont College Building 41  
 (3) Instructional Program Cameras



BUILDING 41  
 FIRST FLOOR

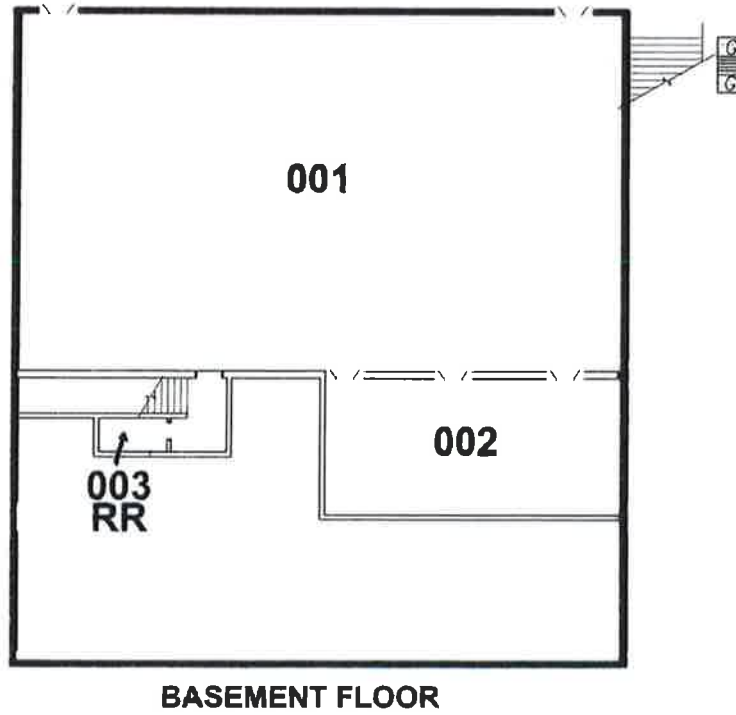
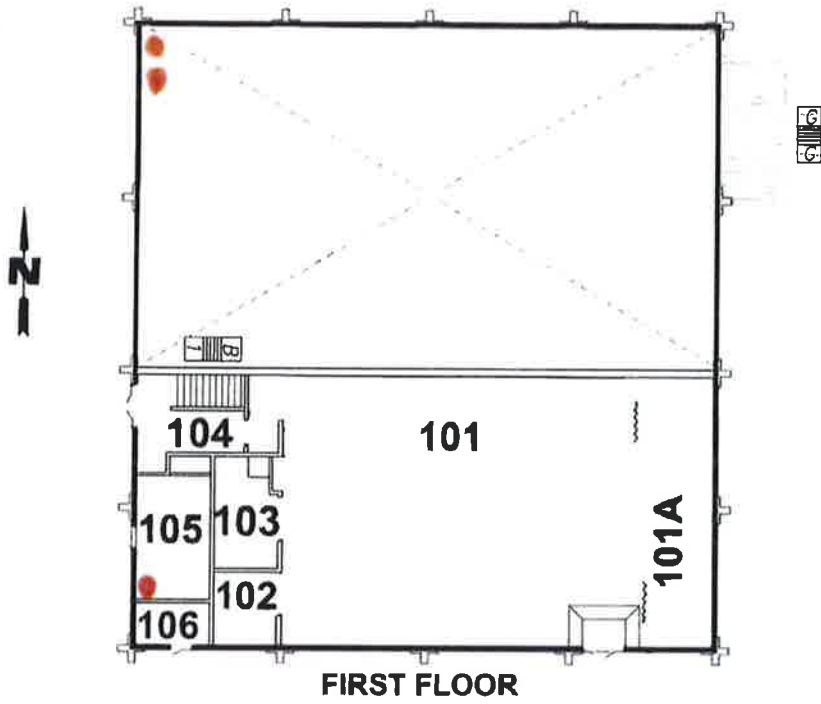


BLDG 41 BASEMENT

BUILDING 41

● Instructional Program Camera

Grossmont College Building 42  
(3) Security Cameras



**LEGEND:**

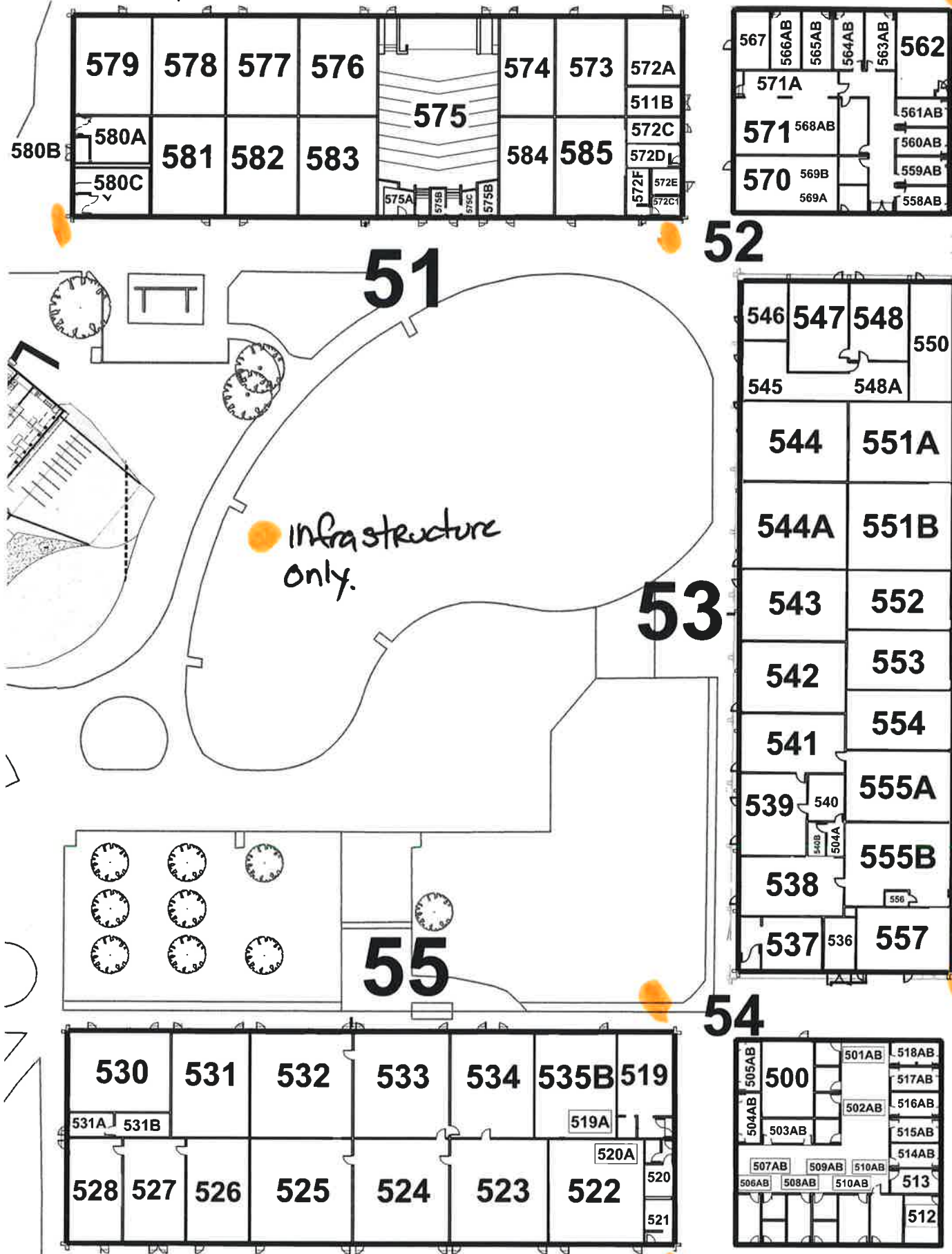


STAIRWAYS

ACCESS RAMPS

**BUILDING 42**

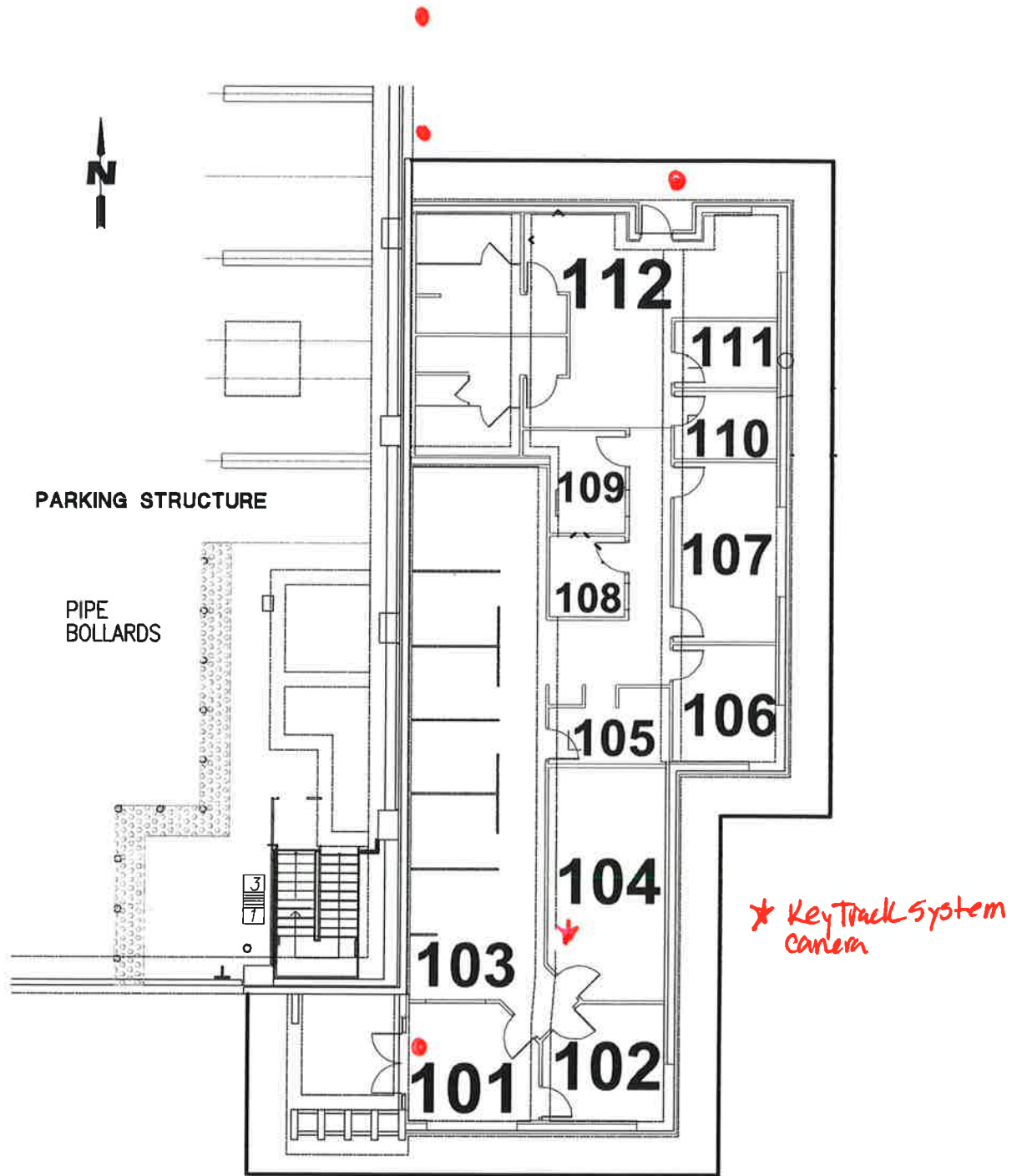
(6) Infrastructure Security Cameras



BUILDING 51, 52, 53, 54, 55

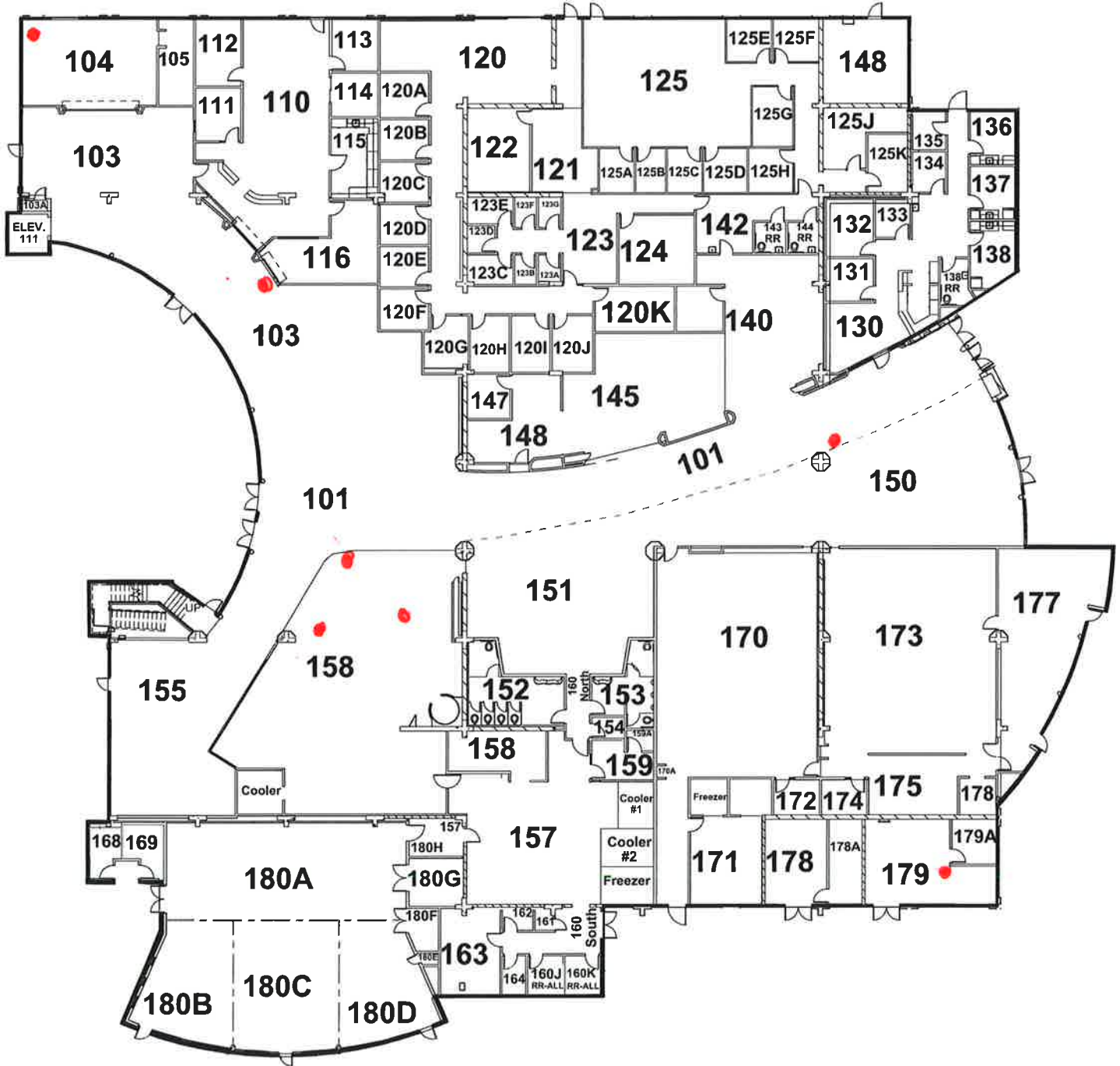


Grossmont College Building 57  
(3) Security Cameras & (1) Key Track Camera



**BUILDING 57  
PUBLIC SAFETY**

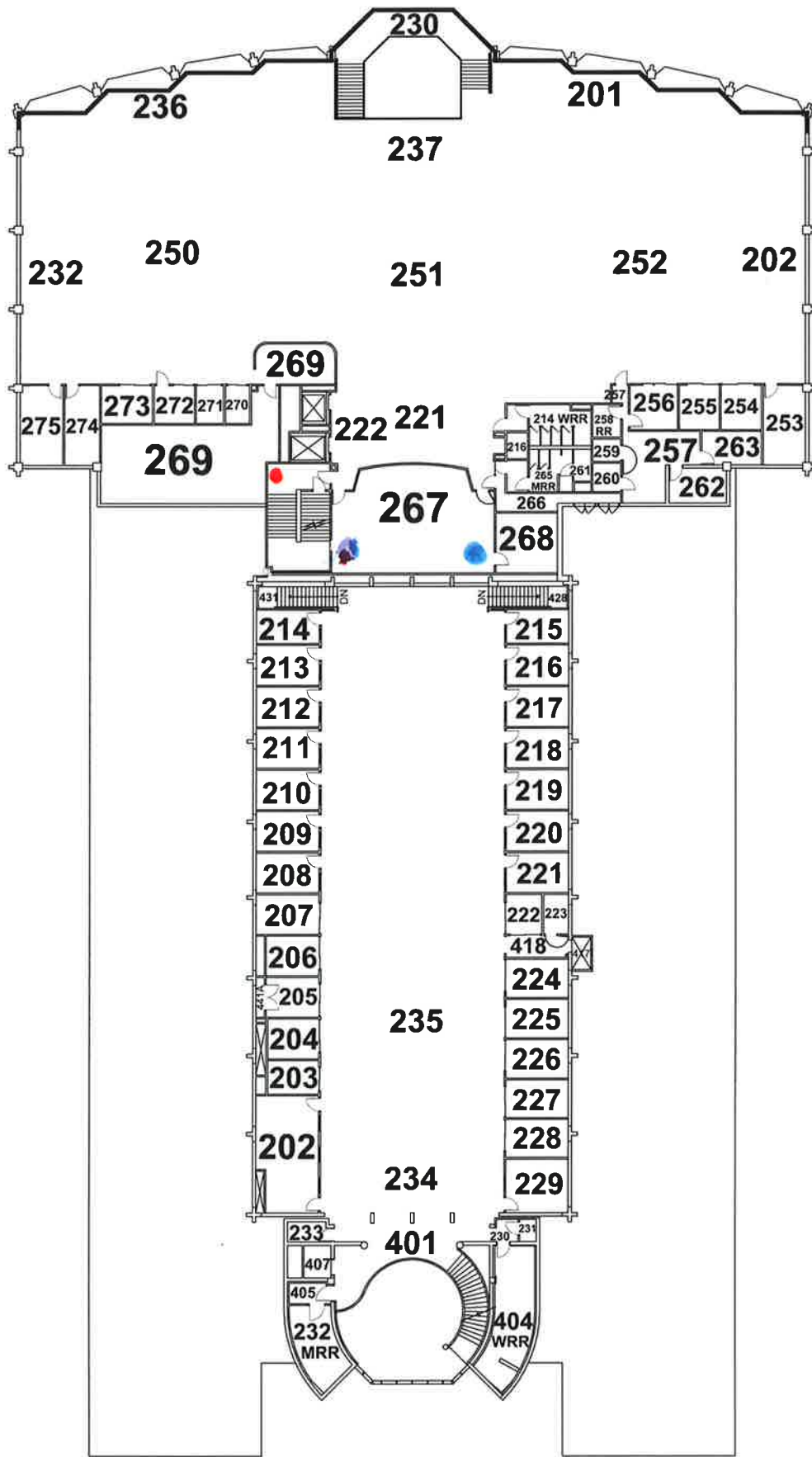
Grossmont College Building 60  
(7) Security Cameras



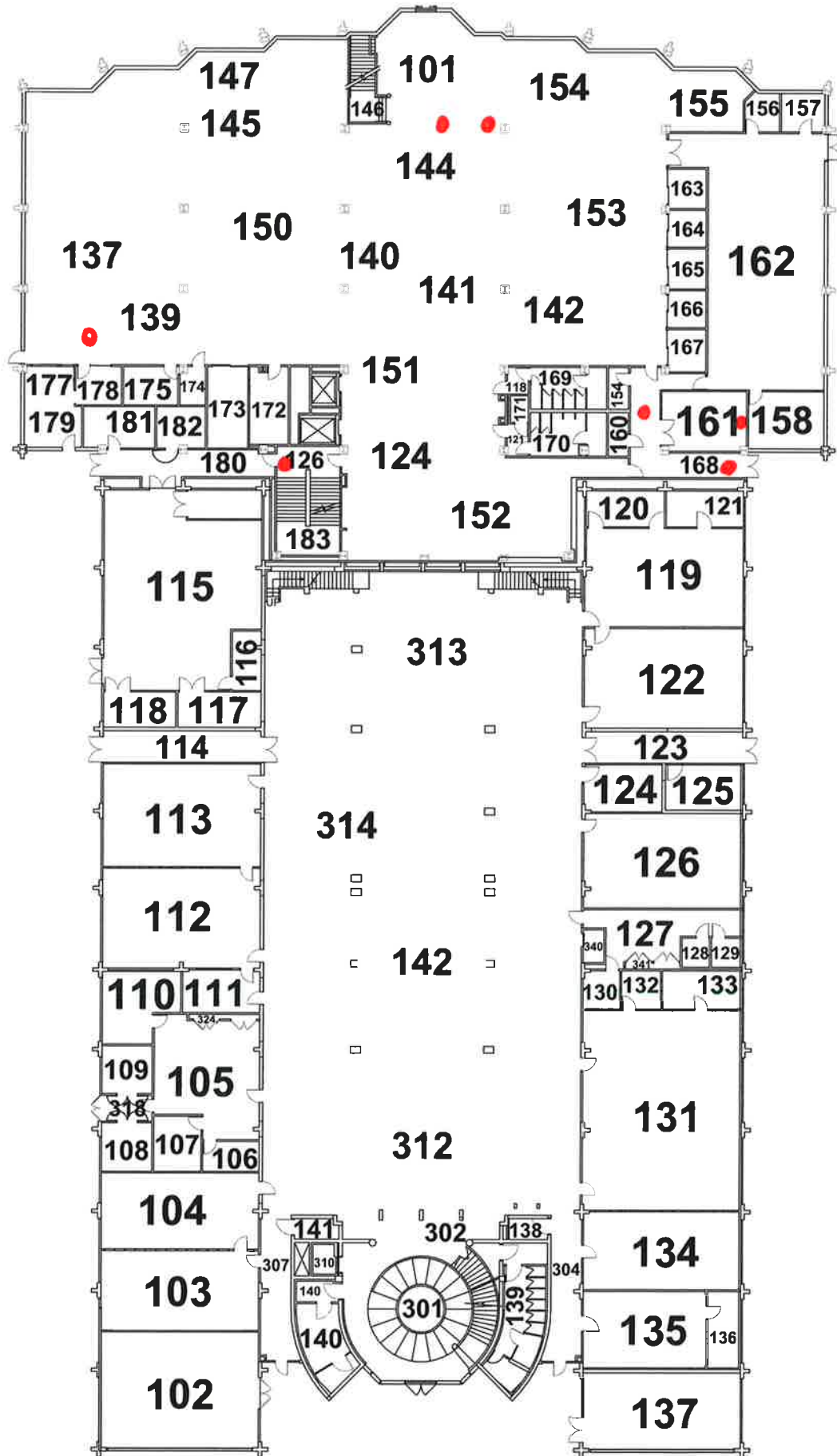
**BUILDING 60  
FIRST FLOOR**

Grossmont College Building 70 - 2nd Floor

(1) Security Camera & (2) Instructional Program Cameras

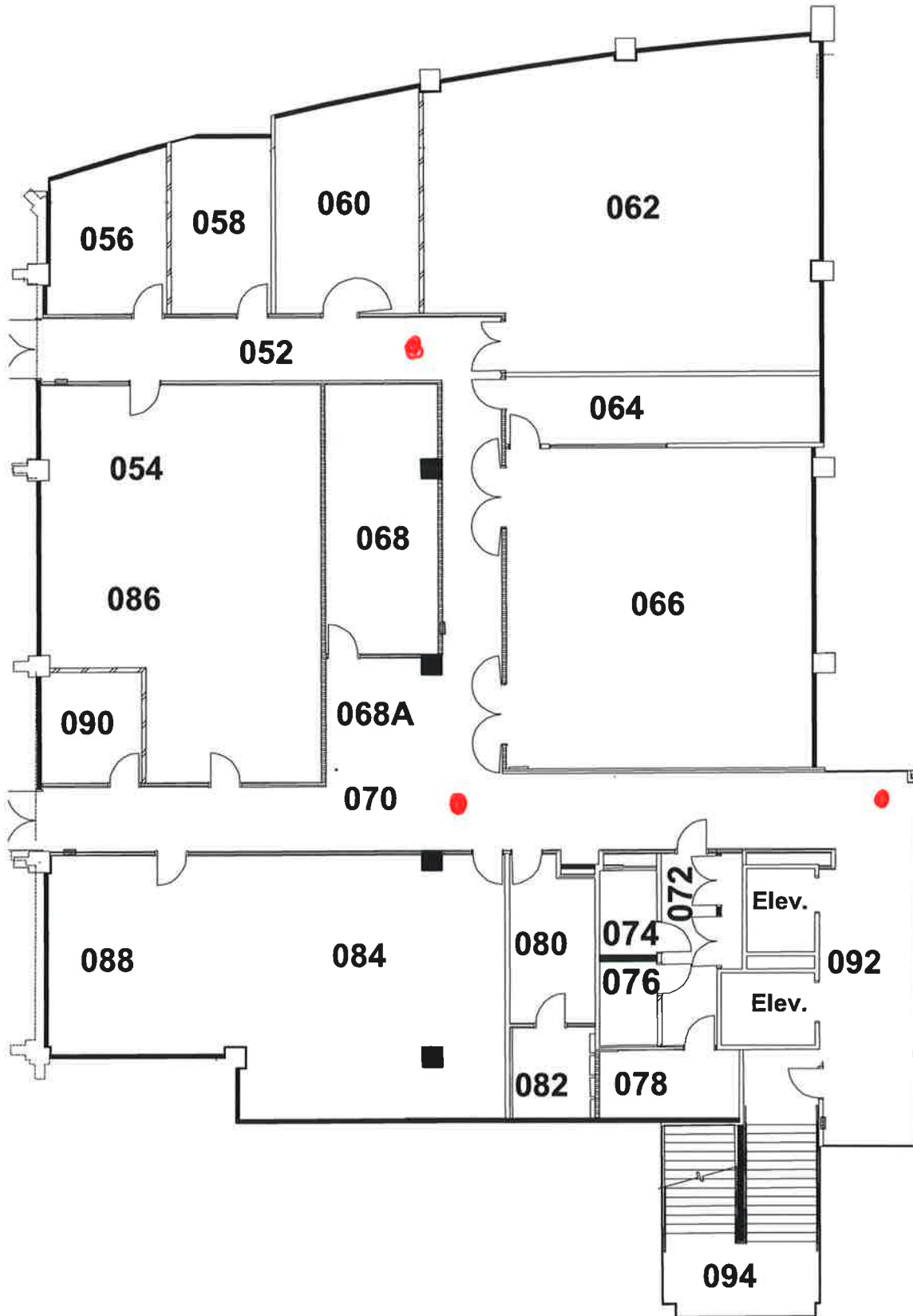


**BLDG 70  
SECOND FLOOR**

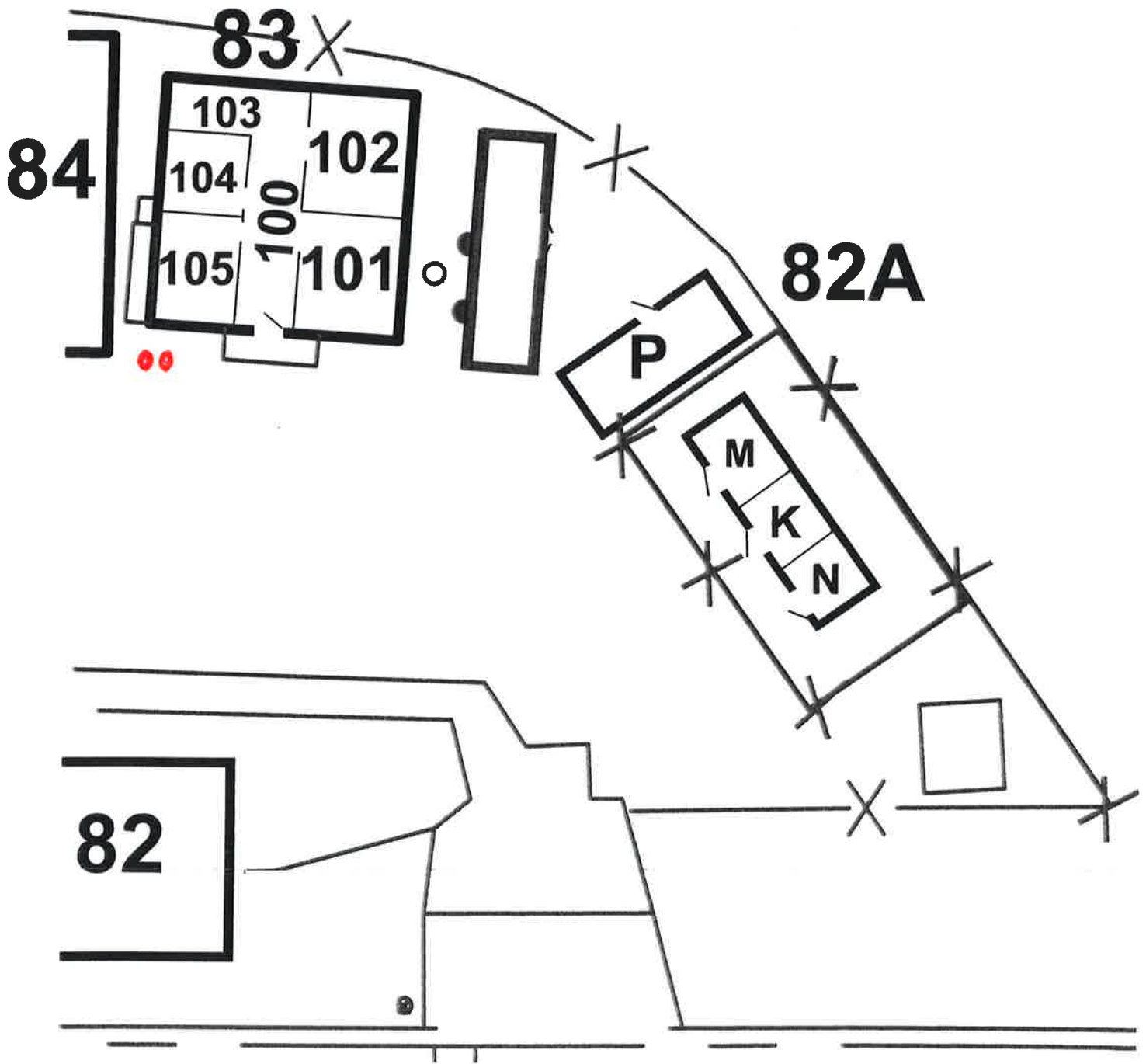


**BLDG 70  
FIRST FLOOR**

Grossmont College Building 70 Basement  
(3) Security Cameras

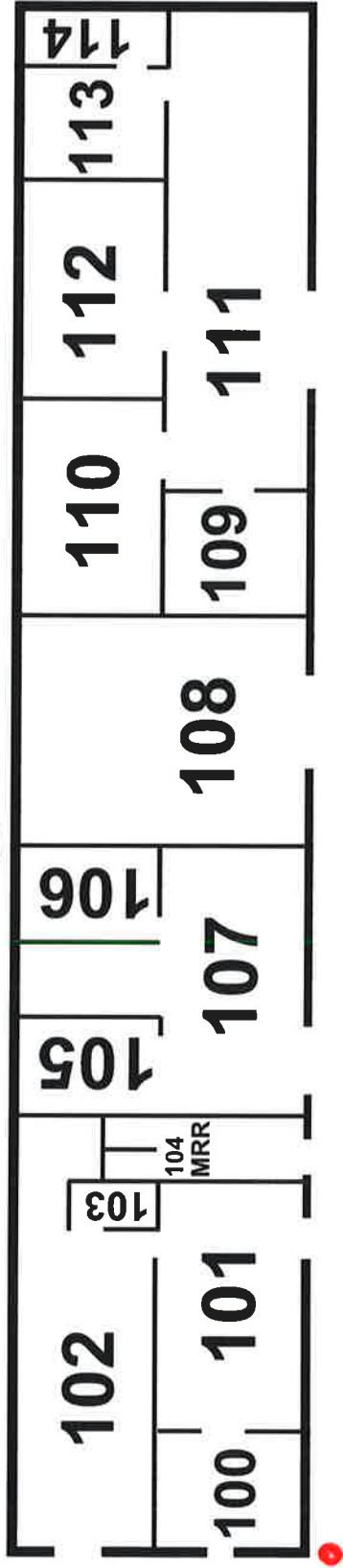


**BLDG 70  
BASEMENT FLOOR**

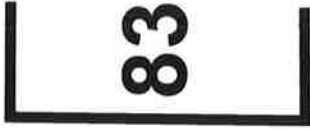


BUILDING 82A, 83

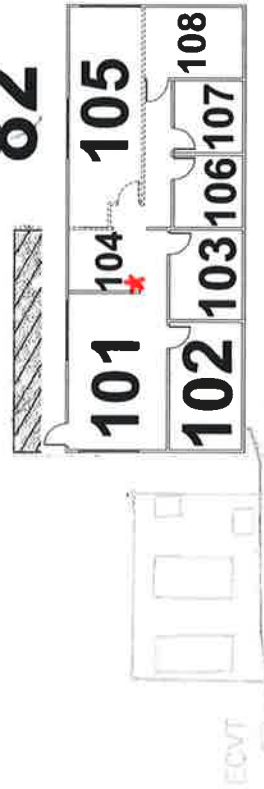
# 84



# 83

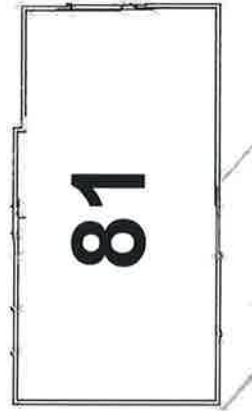


# 82



\*-key Track  
System  
camera.

# 81



Grossmont College Substation  
(5) Security Cameras

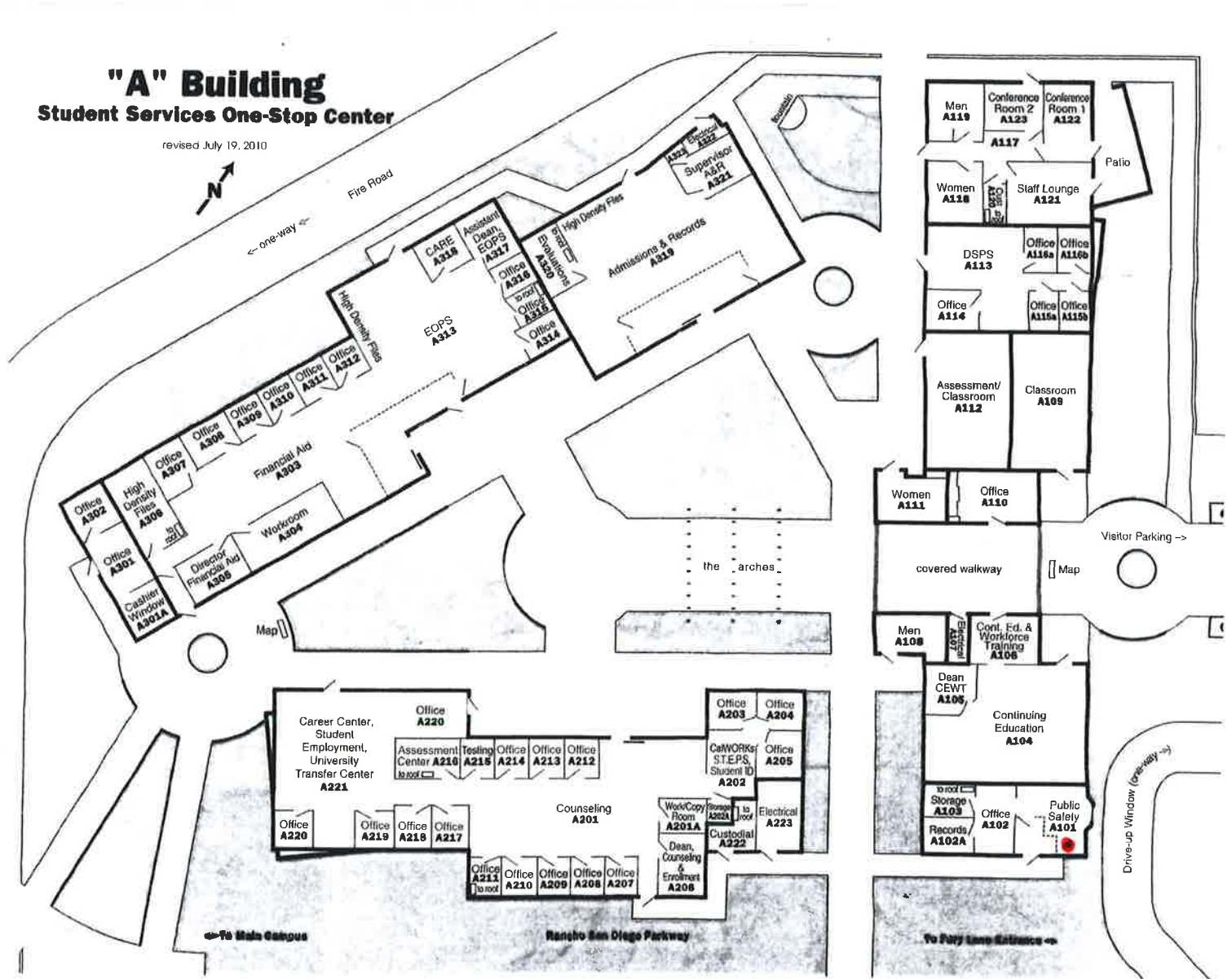


• Security camera.

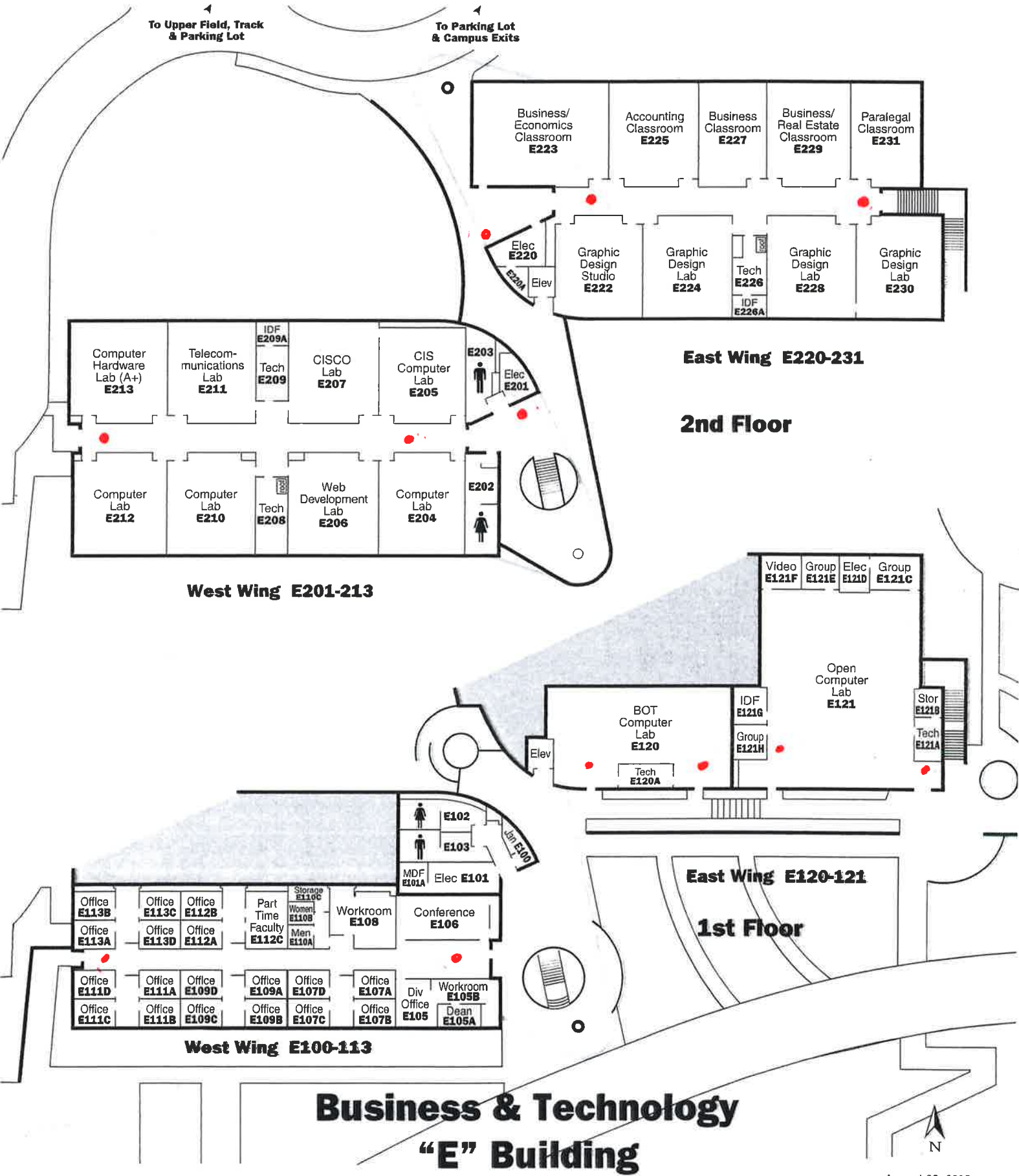
**BUILDING 1**  
**12KV and Electronic**  
**Maintenance**



Cuyamaca College Building A  
 (1) Security Camera



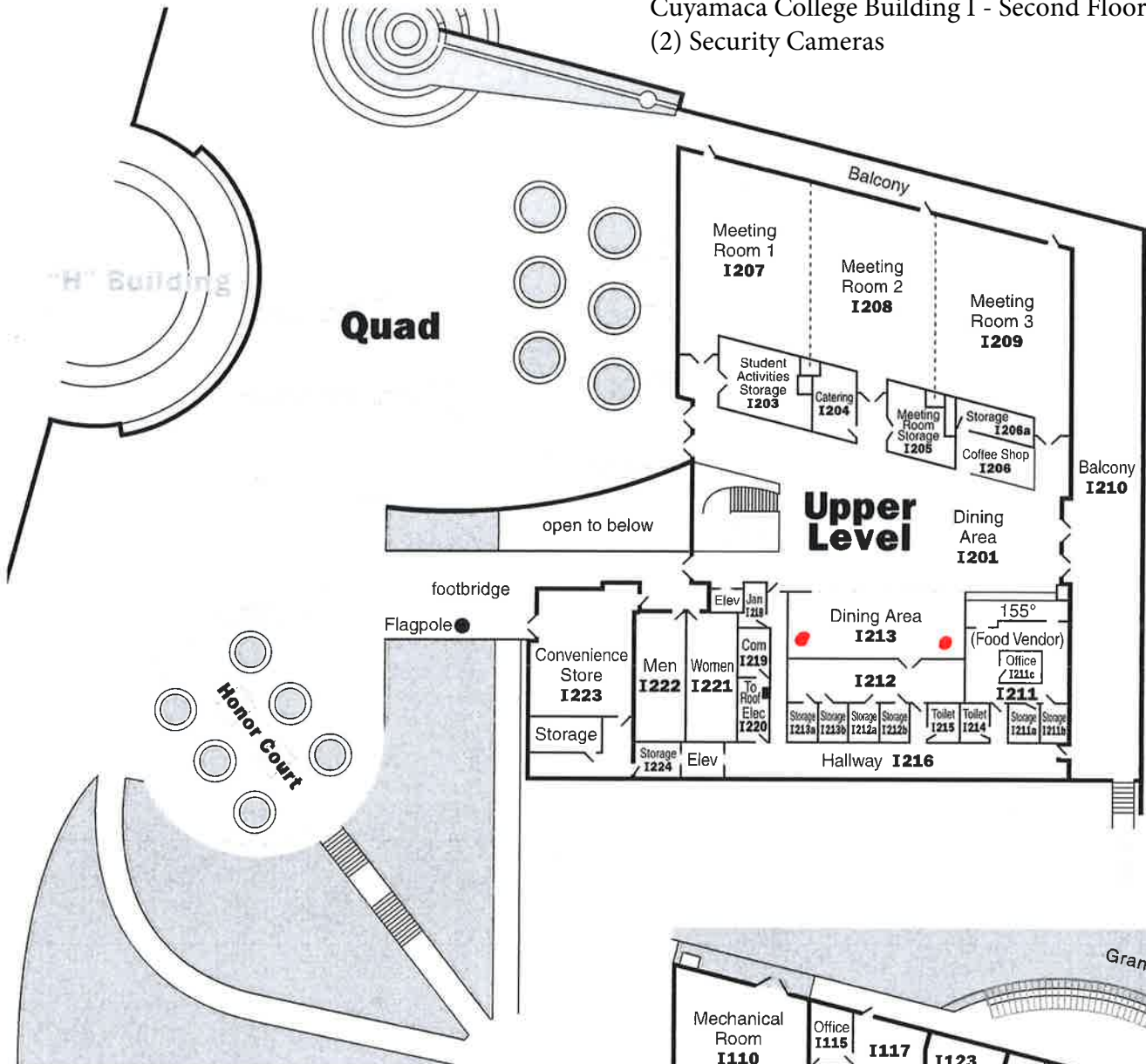
Cuyamaca College Building B  
 (12) Security Cameras



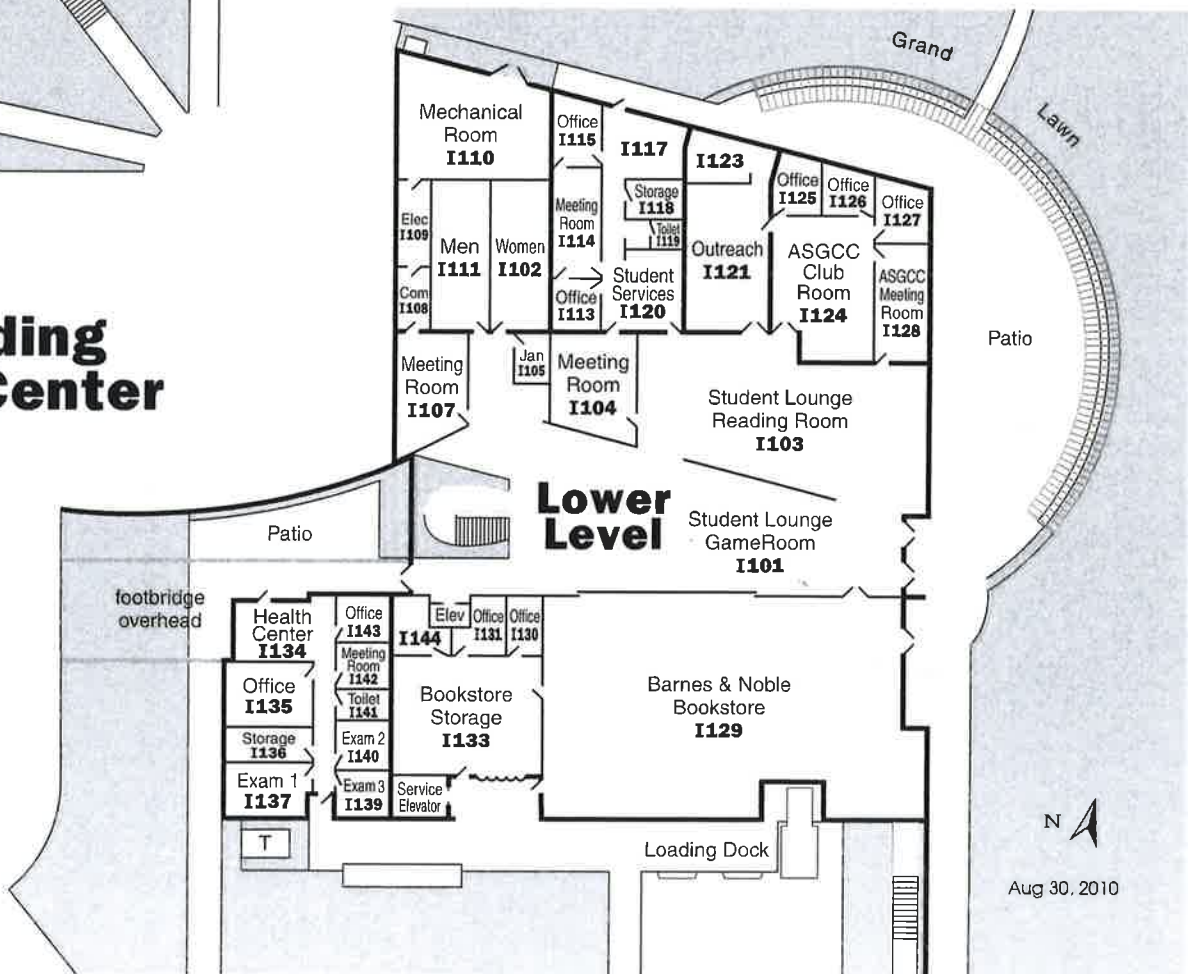
**Business & Technology**  
**"E" Building**



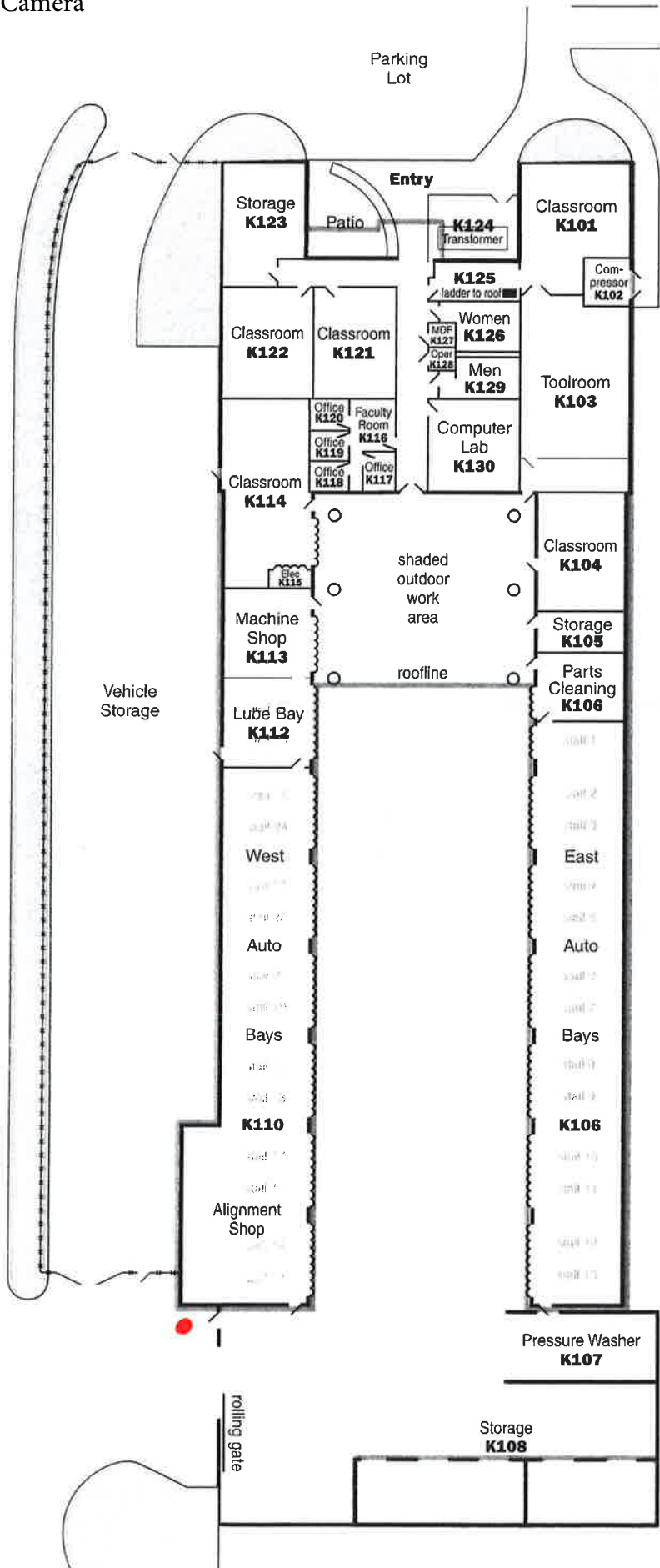
Cuyamaca College Building I - Second Floor  
 (2) Security Cameras



**"I" Building Student Center**



Cuyamaca College Building K  
 (1) Security Camera

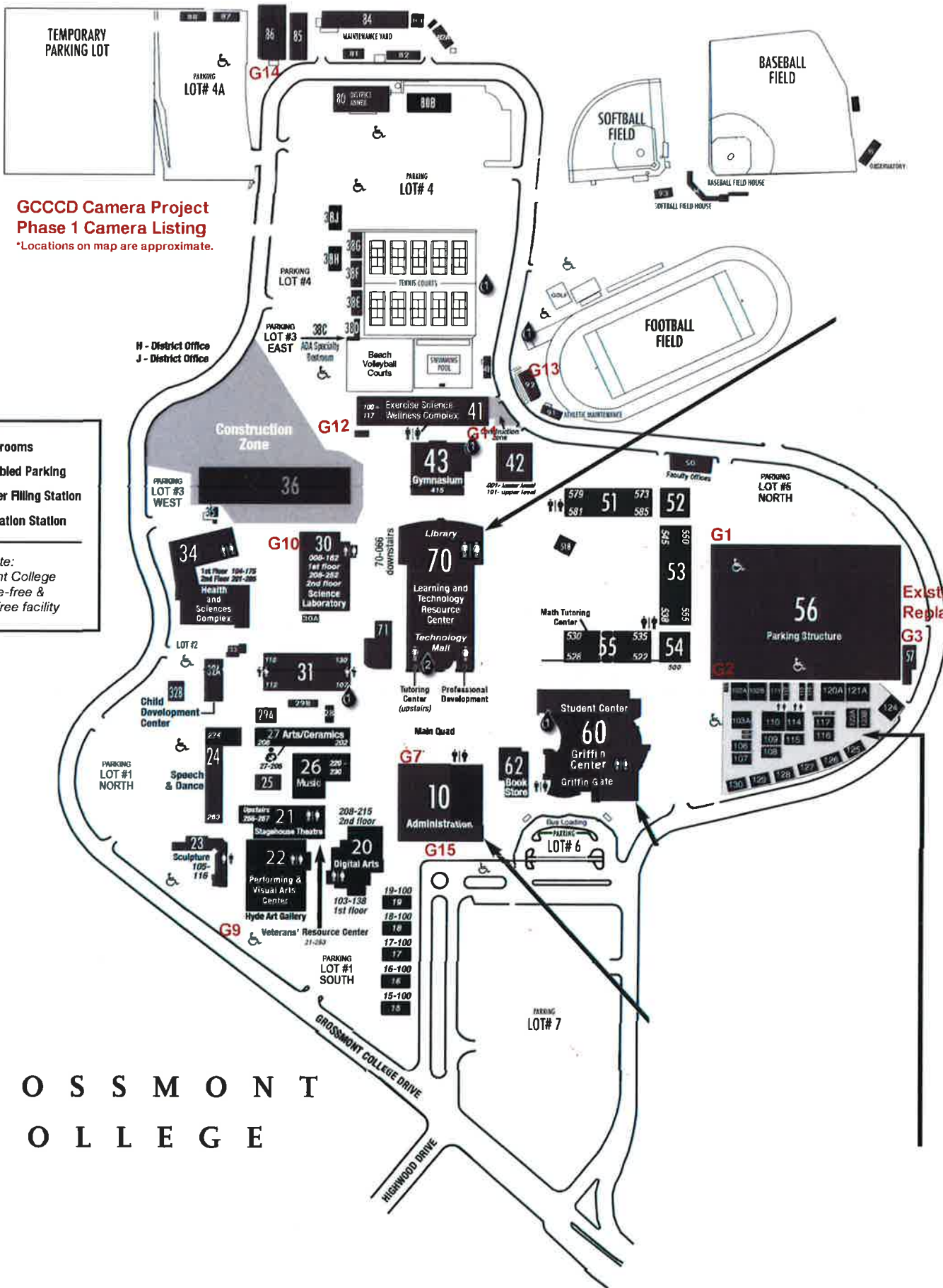


**"K" Building  
 Automotive  
 Technology  
 Complex**

Campus Maps of Proposed  
Non-Instructional Cameras on Campuses  
Phase One

- Grossmont
- Cuyamaca

# GROSSMONT COLLEGE CAMPUS MAP



**GCCCD Camera Project  
Phase 1 Camera Listing**  
\*Locations on map are approximate.

- Restrooms
- Disabled Parking
- Water Filling Station
- Lactation Station

Please note:  
Grossmont College  
is a smoke-free &  
tobacco-free facility

Existing/  
Replacement

G R O S S M O N T  
C O L L E G E

# CUYAMACA COLLEGE

900 Rancho San Diego Parkway  
 El Cajon, California 92019-4369  
 (619) 660-4000  
[www.cuyamaca.edu](http://www.cuyamaca.edu)



- Academic Resource Center - C Bldg
- Administration - F Bldg
- Admissions & Records - G Bldg
- Automotive Technology - K Bldg
- Bookstore - Student Center
- CalWORKs - G Bldg
- Campus & Parking Services (CAPS) - A Bldg
- CARE - G Bldg
- Career Center I Bldg
- Cashier - G Bldg
- Center for Water Studies - L Bldg
- Child Development Center - R Bldg
- Computer Labs/Tech Mall - E Bldg
- Counseling - G Bldg
- Cuyamaca Cares - Next to R Bldg

- DSPS - G Bldg
- DSPS Hi Tech Center - C Bldg
- Duplicating (Faculty Support Services) - F Bldg
- Environmental Training Center (ETC) - F Bldg
- EOPS - G Bldg
- Financial Aid - G Bldg
- Fitness Center - D Bldg
- Food Services - I Bldg
- Gym - D Bldg
- Health & Wellness Center - I Bldg
- Heritage of the Americas Museum - O Bldg
- High School & Community Relations - G Bldg

- Institutional Effectiveness, Success & Equity - E Bldg
- Library (LRC) - C Bldg
- Mailroom - F Bldg
- Ornamental Horticulture - M Bldg
- Placement Center - G Bldg
- Samuel M. Ciccati Performing Arts Center - B Bldg
- Sheriff's Office - A Bldg
- STEM Achievement Center - H Bldg
- Student Affairs - I Bldg
- Student Center - I Bldg
- Switchboard - F Bldg
- Together We Rise! Center - Annex 2
- Transfer Center - G Bldg
- Veterans Center - I Bldg
- Writing Center - B Bldg

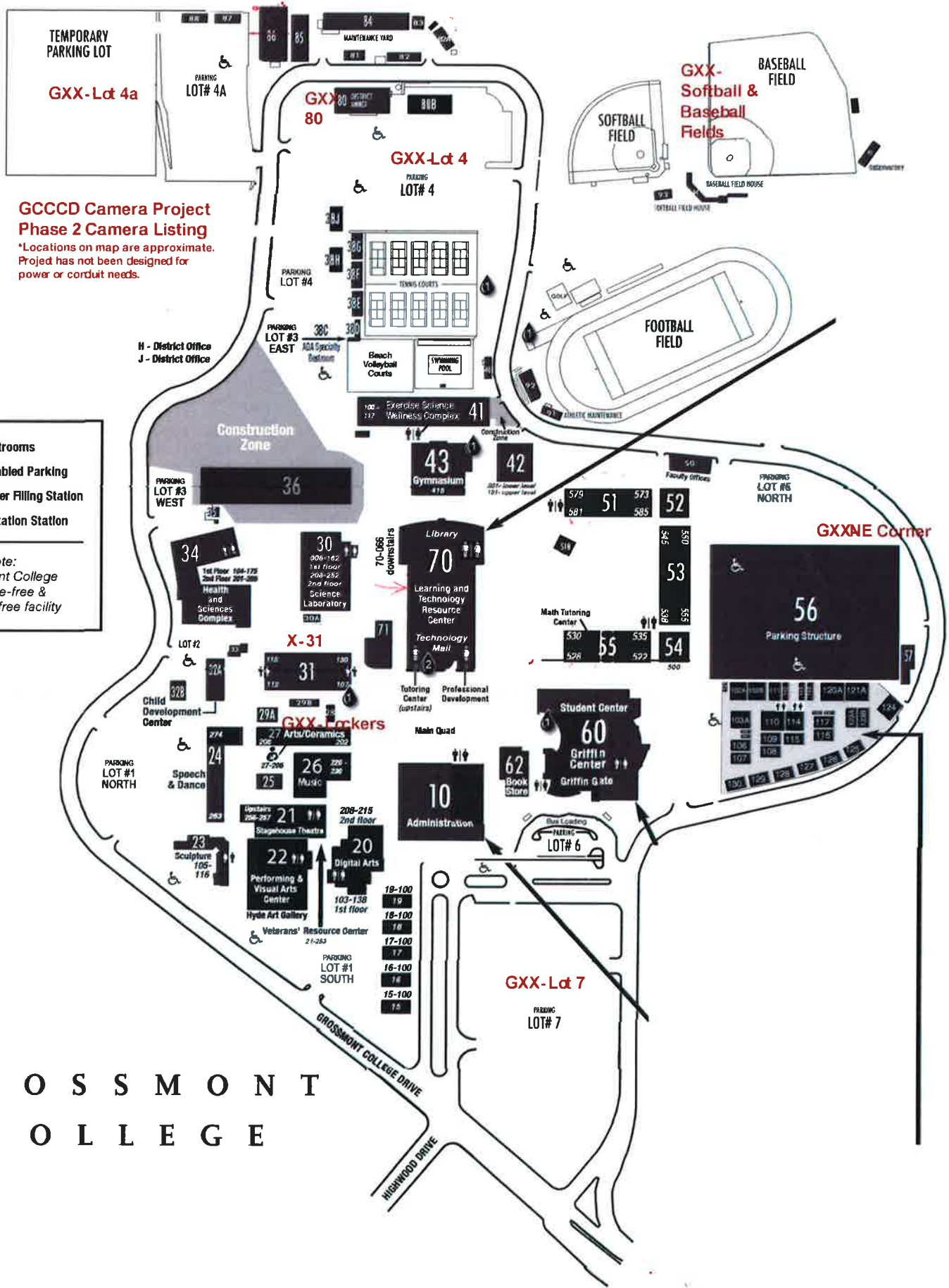


Campus Maps of Proposed  
Non-Instructional Cameras on Campuses  
Phase Two

- Grossmont
- Cuyamaca



# GROSSMONT COLLEGE CAMPUS MAP



**GCCCD Camera Project  
Phase 2 Camera Listing**  
\*Locations on map are approximate.  
Project has not been designed for  
power or conduit needs.

- Restrooms
- Disabled Parking
- Water Filling Station
- Lactation Station

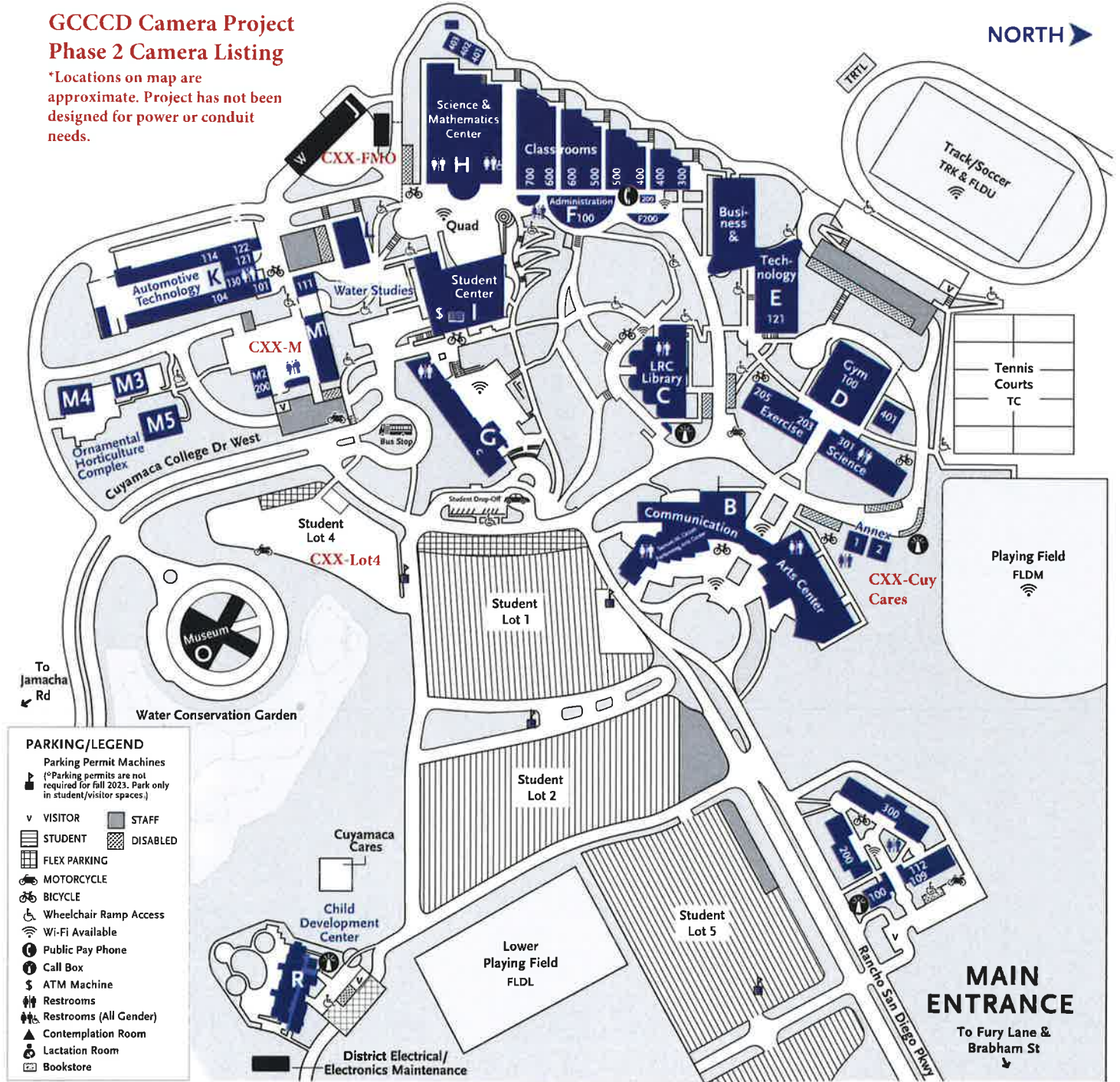
Please note:  
Grossmont College  
is a smoke-free &  
tobacco-free facility

G R O S S M O N T  
C O L L E G E

# CUYAMACA COLLEGE

## GCCCD Camera Project Phase 2 Camera Listing

\*Locations on map are approximate. Project has not been designed for power or conduit needs.



Academic Resource Center - C Bldg  
 Administration - F Bldg  
 Admissions & Records - G Bldg  
 Automotive Technology - K Bldg  
 Bookstore - Student Center  
 CalWORKs - G Bldg  
 Campus & Parking Services (CAPS) - A Bldg  
 CARE - G Bldg  
 Career Center I Bldg  
 Cashier - G Bldg  
 Center for Water Studies - L Bldg  
 Child Development Center - R Bldg  
 Computer Labs/Tech Mall - E Bldg  
 Counseling - G Bldg  
 Cuyamaca Cares - Next to R Bldg

DSPS - G Bldg  
 DSPS Hi Tech Center - C Bldg  
 Duplicating (Faculty Support Services) - F Bldg  
 Environmental Training Center (ETC) - F Bldg  
 EOPS - G Bldg  
 Financial Aid - G Bldg  
 Fitness Center - D Bldg  
 Food Services - I Bldg  
 Gym - D Bldg  
 Health & Wellness Center - I Bldg  
 Heritage of the Americas Museum - O Bldg  
 High School & Community Relations - G Bldg

Institutional Effectiveness, Success & Equity - E Bldg  
 Library (LRC) - C Bldg  
 Mailroom - F Bldg  
 Ornamental Horticulture - M Bldg  
 Placement Center - G Bldg  
 Samuel M. Ciccati Performing Arts Center - B Bldg  
 Sheriff's Office - A Bldg  
 STEM Achievement Center - H Bldg  
 Student Affairs - I Bldg  
 Student Center - I Bldg  
 Switchboard - F Bldg  
 Together We Rise! Center - Annex 2  
 Transfer Center - G Bldg  
 Veterans Center - I Bldg  
 Writing Center - B Bldg



## GCCCD Camera Project

Camera Number on Drawing	Description	Phase 1- Map Phase 1	Phase 2- Map Phase 2	Is this also replacing an existing camera?
<b>Grossmont College</b>				
G1	Parking structure NW- Corner - Lot 5N	X		
G2	Parking structure SW- Corner - Lot 5N	X		
G3	Parking structure CAPS back door - Lot 5N	X		Y
G7	Building 10/Cashier Outdoor Existing Replacement	X		Y
G9	Parking Lot 1 (view of incoming road) - Lot 1S	X		
G10	Building 30 Changed from Building 34		X	
G11	Between buildings 41 and 42	X		
G12	Building 41/view of building 36, stairs, lot and exitway	X		
G13	Football Field	X		
G14	Building 86 and Lot 4 Entrance	X		
G15	Building 10 View of Griffin Drive/Flagpole area	X		
<b>Requests from Academic Senate/Phase 2</b>				
GXX	Softball field		X	
GXX	Baseball field		X	
GXX	building 31 north side		X	
GXX	parking lot 4 and 4a		X	
GXX	building 80		X	
GXX	parking lot 7		X	
GXX	remaining corner of the garage - NE		X	
GXX	building 27 lockers		X	
<b>Cameras Recently Removed from the Project</b>				
G4	Building 62			
G5	Building 60			
G6	Building 70			
G8	Building 25 lockers			
GXX	500's Quad			

### Cuyamaca College

Camera Number on Drawing	Description	Phase 1- Map Phase 1	Phase 2- Map Phase 2	Is this replacing an existing camera?
C3	Buiding A - RSDP West/Fury Drive entrance	X		
C4	Parking lot 5- nearest Fury	X		
C5	Lot 1 view of RSDP	X		
C6	Building B view of roadway past back of B	X		
C7	Building C	X		
C8	Parking lot 2	X		
C9a	track and field (back to back views)	X		
C9b	track and field (back to back views)	X		
C11	Center for water studies exterior pathways	X		
C12	building G cashier exterior	X		
C13	building L water studies	X		
C14	Building G towards bus loop	X		
C15	middle of Cuyamaca College Drive roadway	X		
<b>Requests from Academic Senate/Phase 2</b>				
	Cuyamaca Cares			
	Lot 4 Water Conservation			
	FMO Trailers			
	Building M Horticulture			
<b>Cameras Recently Removed from the Project</b>				
	G Building Plaza			
	H Buiding Plaza			
	B Building Plaza			

**Camera Replacement Project - Removing 3 Cameras from PVAC to replace current needs**

CAPS Lobby at CC (inside)

CAPS Lobby at GC (inside)

GC Cashiers (inside)

\*All of these cameras in PVAC are indoor use only. We cannot replace outdoor cameras with these.

## Campus Locations of HyFlex Instructional Cameras

- Grossmont
- Cuyamaca

UPDATED ON

7/20/2023

**PROGRESS LEGEND (GROSSMONT COLLEGE)**

- X = Work Performed
- / = In Progress
- ? = Pending District review
- Blank = No work noted
- PST = Pending GC Submission (Southland)
- NA = Not Applicable

Activity

10

Hyflex spaces, cameras respond to controls from touch panel. Audio and Video appear correctly on the PC (zoom). Confirm Dante routing is correctly set.

Rm. Qty. per Bldg.

Quantity	ROOM #	Room Layout	Room Type	Equip. Type	TV's	Building #	Rooms Complete = 1 Not Complete = 0	Building equipment installed Completed = 1 Not Completed = 0	
1	10-116	F	Conference TV	31	75	10	1	1	X
2	10-117	F	Conference TV	31	75		1		X
3	10-118	F	Conference TV	31	75		1		X
4	10-119	F	Conference TV	31	75		1		X
5	10-135	F	Conference TV	31	85		1		X
6	10-153	F	Conference TV	31	75		1		X
7	10-166D	F	Conference Projector	32			1		X
8	10-172	E	Classroom Projector	27			1		X
9	20-104	E	Classroom Projector & Hyflex	27 HF		20	1	1	X
10	20-105	E	Classroom Projector & Hyflex	27 HF			1		X
11	20-116	F	Classroom TV & Hyflex	28 HF	85		1		X
12	20-120	E	Classroom Projector & Hyflex	27 HF	touch TV		1		X
13	20-131	F	Classroom TV	28	65		1		NA
14	20-138	F	Classroom TV	28	98		1		NA
15	20-211	F	Conference TV	31	75		1		X
16	20-212	E	Classroom Projector & Hyflex	27 HF			1		X
9	17	20-214	F	Conference Touch TV	34	75 TOUCH	1	X	
18	21-235	E	Classroom Projector & Hyflex	27 HF		21	1	1	X
19	21-241	E	Classroom Projector	27	special		1		NA
20	21-247	E	Classroom Projector	27			1		NA
21	21-249	F	Classroom TV	28	65		1		NA

6	22	21-256	E	Classroom Projector	27			1		NA
	23	21-257	E	Classroom Projector	27			1		NA
1	24	22-210	E	Classroom Projector	27		22	1	1	NA
	25	23-105	E	Classroom Projector	27			1		NA
2	26	23-112	E	Classroom Projector	27		23	1	1	NA
	27	24-263	E	Classroom Projector & Hyflex Record	27 HFR			1		X
	28	24-268	E	Classroom Projector & Hyflex Record	27 HFR			1		X
	29	24-269	E	Classroom Projector & Hyflex Record	27 HFR		24	1	1	X
	30	24-271	E	Classroom Projector	27			1		NA
5	31	24-274	E	Classroom Projector	27			1		NA
	32	26-220	E	Classroom Projector & Hyflex Record	27 HFR			1		X
	33	26-221	E	Classroom Projector & Hyflex	27 HF			1		X
	34	26-224	E	Classroom Projector	27		26	1	1	NA
	35	26-225	E	Classroom Projector & Hyflex	27 HF			1		X
5	36	26-230A	F	Classroom TV	28	65		1		NA
	37	27-202	E	Classroom Projector	27			1		NA
	38	27-204	F	Classroom TV	28	85		1		NA
	39	27-207	E	Classroom Projector	27		27	1	1	NA
4	40	27-208	E	Classroom Projector	27			1		NA
	41	30-108	E	Classroom Projector	27			1		NA
	42	30-112	E	Classroom Projector	27			1		NA
	43	30-120	E	Classroom Projector	27			1		NA
	44	30-128	E	Classroom Projector	27			1		NA
	45	30-138	E	Classroom Projector	27			1		NA
	46	30-154	E	Classroom Projector	27			1		NA
	47	30-208	E	Classroom Projector	27	65 DUAL		1		NA
	48	30-222	E	Classroom Projector	27			1		NA
	49	30-240	E	Classroom Projector	27			1		NA
	50	30-242	E	Classroom Projector	27			1		NA
	51	30-250	E	Classroom Projector	27			1		NA
12	52	30-252	H	Classroom Projector Dual & Hyflex	30 HF			1		X
	53	31-107	N/A	wiring only	Keynote 25, 38			1		X
	54	31-109	N/A	wiring only	Keynote 25, 38			1		X
	55	31-110	N/A	wiring only	Keynote 25, 37			1		NA
	56	31-112	N/A	wiring only	Keynote 25		31	1	1	NA
	57	31-125	N/A	wiring only	Keynote 25, 37			1		NA
	58	31-127	N/A	wiring only	Keynote 25, 37			1		NA
	59	31-128	N/A	wiring only	Keynote 25, 37			1		X
8	60	31-129	N/A	wiring only	Keynote 25, 37			1		X
1	61	32A-296	E	Classroom Projector	27		32A	1	1	NA
	62	34-104	H	Classroom Projector Dual	30			1		X
	63	34-105	E	Classroom Projector	27			1		X
	64	34-106	E	Classroom Projector	27			1		X

	65	34-107	E	Health	Special - See Keynote work		1		NA	
	66	34-108	E	Classroom Projector	27		1		X	
	67	34-110	E	Classroom Projector	27		1		X	
	68	34-111	E	Classroom Projector	27		1		X	
	69	34-130	H	Classroom Projector Dual	30		1		X	
	70	34-135	E	Classroom Projector & Hyflex	27 HF		1		X	
	71	34-150	E	wiring only	Keynote 17, 38		1		X	
	72	34-170	E	Classroom Projector	27		1		X	
	73	34-171	E	Classroom Projector & Hyflex	27 HF		1		X	
	74	34-172	E	Classroom Projector	27		1		X	
	75	34-201	H	Classroom Projector Dual & Hyflex	30 HF		1		X	
	76	34-202	F	Classroom TV	28	55	1	1	NA	
	77	34-204	E	Classroom Projector & Hyflex	27 HF		1		X	
	78	34-206	N/A	Health	Special - See Keynote work		1		X	
	79	34-207	E	Classroom Projector & Hyflex	27 HF		1		X	
	80	34-209	E	Classroom Projector & Hyflex	27 HF		1		X	
	81	34-210	E	Classroom Projector & Hyflex	27 HF		1		X	
	82	34-211	E	Classroom Projector	27		1		X	
	83	34-212	E	Classroom Projector	27		1		X	
	84	34-213	H	Classroom TV Dual	29	70 DUAL	1		X	
	85	34-214	E	Classroom Projector	27		1		X	
	86	34-250	E	Classroom Projector & Hyflex	27 HF		1		X	
	87	34-251	E	Classroom Projector & Hyflex	27 HF		1		X	
	88	34-254	E	Classroom Projector	27		1		X	
28	89	34-255	E	Conference Projector & Hyflex	32		1		X	
	90	38F-101	E	Classroom Projector	27		1	1	X	
2	91	38F-102	E	Classroom Projector	27	38-F	1	1	X	
1	92	38G-101	E	Classroom Projector	27	38-G	1	1	X	
	93	38-H	F	Conference TV	31	75	38-H	1	1	X
1	94	38-J	G	Conference TV Dual	33	75 DUAL	38-J	1	1	X
	95	41-100	F	Classroom TV	28	75 TOUCH		1	NA	
	96	41-101	E	Classroom Projector	27			1	NA	
	97	41-108	F	Conference TV	31	85	41	1	NA	
	98	41-116	E	Classroom Projector & Hyflex	27 HF			1	X	
	99	41-117	N/A	wiring only	Keynote 38			1	X	
6	100	41-145	F	Conference TV	31	85		1	X	
	101	42-001	B	Classroom TV Dual	29	98 DUAL	42	1	NA	
2	102	42-101	E	Classroom Projector	27			1	NA	
1	103	43-415	F	Main Gym	Special		43	1	NA	
	104	52-562	E	Conference Projector	32		52	0		
	105	52-570	E	Classroom Projector	27			0	1	
3	106	52-571	E	Classroom Projector	27			0		
	107	53-538	E	Classroom Projector	27			1	X	



	108	53-539	E	Classroom Projector	27		53	1		X
	109	53-541	E	Classroom Projector	27			1		X
	110	53-542	E	Classroom Projector	27			1		X
	111	53-543	E	Classroom Projector	27			1		X
	112	53-544B	E	Classroom Projector & Hyflex	27 HF			1		X
	113	53-547	E	Classroom Projector	27			1		X
	114	53-548	E	Classroom Projector	27			1	1	X
	115	53-550	E	Classroom Projector	27			1		X
	116	53-551A	E	Classroom Projector & Hyflex	27 HF			1		X
	117	53-551B	E	Classroom Projector	27			1		X
	118	53-552	E	Classroom Projector	27			1		X
	119	53-553	E	Classroom Projector	27			1		X
	120	53-554	E	Classroom Projector	27			1		X
	121	53-555A	E	Classroom Projector	27			1		X
16	122	53-555B	E	Classroom Projector	27			1		X
1	123	54-500	E	Classroom Projector	27		54	1	1	NA
1	124	57-107	F	Classroom TV	31	75	57	1	1	X
	125	60-102	E	Conference Projector	32	special		1		NA
	126	60-116	F	Conference TV	31	?		1		X
	127	60-122	E	Conference Projector	32			1		NA
	128	60-146	E	Conference Projector	32		60	1	1	X
	129	60-170	E	Classroom Projector & Hyflex Record	27 HFR			1		X
	130	60-173	E	Classroom Projector & Hyflex Record	27 HFR			1		X
7	131	60-207	E	Conference Projector	32			1		X
	132	70-066	E	Classroom Projector	27			1		NA
	133	70-103	E	Classroom Projector	27			1		NA
	134	70-104	E	Classroom Projector & Hyflex	27 HF			1		X
	135	70-113	E	Classroom Projector	27			1		NA
	136	70-122	E	Classroom Projector	27			1		NA
	137	70-126	E	Classroom Projector & Hyflex	27 HF			1	1	X
	138	70-131	E	Classroom Projector	27		70	1		NA
	139	70-134	E	Classroom Projector & Hyflex	27 HF			1		X
	140	70-135	E	Classroom Projector	27			1		NA
	141	70-162	G	Conference TV Dual	33	75 DUAL		1		X
	142	70-173	F	Conference TV	31	75		1		NA
12	143	70-267	E	Classroom Projector & Hyflex	27 HF			1		X
	144	80-851	G	Conference Touch TV Dual	35	75 TOUCHDUAL		1		X
	ASI 02	80-857d	F	Conference	31	65	80	1	1	X
3	145	80-860	G	Conference TV Dual	33	75 DUAL		1		NA
1	146	80B-Conference	H	Conference TV	31	65	80B	1	1	NA
	147	86-800	F	Conference TV	31	75		1		X
	148	86-802	F	Conference Touch TV	34	86 TOUCH		1		X
GC PAGE 4	149	86-805	F	Conference TV	31	75		1		X

	ASI 02	86-806a		Chancellor's office			1		X
5	150	86-826	F	Conference TV	31	65	1		X
	151	100-102A	H	Classroom Projector Dual	30		1	1	X
	152	100-102B	H	#N/A	30		1	1	X
	153	100-103A	E	#N/A	27		1	1	X
	154	100-106	E	#N/A	27		1	1	X
	155	100-109	N/A	wiring only	Keynote 38		1	1	X
	156	100-110	H	#N/A	30		1	1	X
	157	100-111	E		27		1	1	X
	158	100-114	H	#N/A	30		1	1	X
	159	100-115	E	Classroom Projector & Hyflex	27 HF		1	1	X
	160	100-116	E	Classroom Projector	27		1	1	X
	161	100-117	E	Classroom Projector	27		1	1	X
	162	100-120A	E	Classroom Projector	27		1	1	X
	163	100-121A	H	Classroom Projector Dual	30		1	1	X
	164	100-123A	H	Classroom Projector	27		1	1	X
	165	100-123B	E	Classroom Projector	27		1	1	X
	166	100-125	H	Classroom Projector Dual	30		1	1	X
	167	100-126	H	Classroom Projector Dual	30		1	1	X
	168	100-127	H	Classroom Projector Dual	30		1	1	X
	169	100-128	H	Classroom Projector Dual	30		1	1	X
	170	100-129	H	Classroom Projector Dual	30		1	1	X
	171	100-130	E	Classroom Projector	27		1	1	X
	172	17-100	H	Classroom Projector Dual	30		1	1	X
	173	18-100	H	Classroom Projector Dual	30		1	1	X
24	174	19-100	H	Classroom Projector Dual	30		1	1	X
	<b>Total room Qty</b>						<b>Rooms completed</b>	<b>Buildings Completed</b>	
176	<b>176</b>						176	51	

AS of 6/21

7/20/2023	<b>Progress Percentage</b>		<b>Summa</b> Rooms that installation Buildings completed Buildings 100%
100.00%	Percent complete by Room		
100.00%	Percent complete by Building		

UPDATED ON

7/26/2023	<b>PROGRESS LEGEND (CUYAMACA COLLEGE)</b>
	X = Work Performed / = In Progress ? = Pending District review Blank = No work noted PST = Pending GC Submission (Southland) NA = Not Applicable

Activity
10

Rms per Bldg

Project Room Quantity	ROOM #	Room Layout	Room Type	Equip. Type	TV's	Building #	Rooms Complete = 1 Not Complete = 0	Building equipment installed Completed = 1 Not Completed = 0	Hyflex spaces: cameras respond to controls from touch panel; Audio and Video appear correctly on the PC (Zoom); Confirm Dante routing is correctly set.
1	B154	B	Classroom	01		B	1	1	X
2	B159	B	Classroom	01			1		X
3	B160 - Special	B	Classroom	01			1		X
4	B162 - Special	D	Conference	26			1		X
5	B164 - Special	B	Classroom	01			1		X
6	B167	B	Classroom	01			1		X
7	B172	B	Classroom	01			1		X
8	B171	B	Classroom	01			1		X
9	B258	A	Classroom	03			1		X
10	B268	A	Classroom	03			1		X
11	B269	A	Classroom	03			1		X
12	B270	A	Classroom	03			1		X
13	B271	A	Classroom	03			1		X
14	B352 - Special	D	Conference	26			1		X
15	B360	B	Classroom	05			1		X
16	B363	B	Classroom	05			1		X
17	B368	B	Classroom	05			1		X
18	B371	B	Classroom	05			1		X

19	B373	B	Classroom	05			1		X
20	B376	B	Classroom	05			1		X
21	B120 - Special	C	Classroom	02			1		X
22	B-209 - Special	A	Classroom	04			1		X
23	B312 - Special	B	Classroom	06			1		X
24	C145 - Special	D	Conference	07		C	1	1	X
25	D205 - Special	B	Aerobics (Dance room )	08		D	1	1	X
26	E106 - Special	D	Conference	12			1		X
27	E120 - Special	B	Classroom (Computer Lab)	11			1		X
28	E204	A	Classroom (Addendum 2)	11			1		X
29	E205	A	Classroom (Addendum 2)	11			1		X
30	E206	A	Classroom (Addendum 2)	11			1		X
31	E207	A	Classroom (Addendum 2)	11		E	1	1	X
32	E211	A	Classroom (Addendum 2)	11			1		X
33	E212	A	Classroom (Addendum 2)	11			1		X
34	E213	A	Classroom (Addendum 2)	11			1		X
35	E222	A	Classroom (Addendum 2)	11			1		X
36	E223	A	Classroom (Addendum 2)	11			1		X
37	E224	A	Classroom (Addendum 2)	11			1		X
38	E227	B	Classroom (Addendum 2)	11			1		X
39	E228	A	Classroom (Addendum 2)	11			1		X
40	E229	B	Classroom (Addendum 2)	11			1		X
41	E230	A	Classroom (Addendum 2)	11			1		X
42	E231	B	Classroom (Addendum 2)	11			1		X
43	F301 - Special	A	Classroom	12			1		X
44	F606 - Special	A	Classroom	14		F	1	1	X
45	F601 - Special	A	Classroom	13			1		X

23  
1  
1

1  
2  
3  
4  
5  
6  
7  
8  
9  
10  
11  
12  
13  
14  
15  
16

46	H113	B	Classroom	15		H	1	1	X
47	H114	B	Classroom	15			1		X
48	H118	B	Classroom	15			1		X
49	H119	B	Classroom	15			1		X
50	H127	B	Classroom	15			1		X
51	H128	B	Classroom	15			1		X
52	H133	B	Classroom	15			1		X
53	H134	B	Classroom	15			1		X
54	H138	B	Classroom	15			1		X
55	H139	B	Classroom	15			1		X
56	H202	B	Classroom	16			1		X
57	H204	B	Classroom	16			1		X
58	H205	B	Classroom	16			1		X
59	H206	B	Classroom	17			1		X
60	H221	B	Classroom	16			1		X
61	H - Annex #1 - H401	B	Biology Classroom (West)	18		H Portables	1	1	X
62	H - Annex #2 - H403	B	Chemistry Classroom (East)	18			1		X
63	K101	C	Classroom	20		K	1	1	X
64	K104	C	Classroom	19			1		X
	K110	C	Classroom	21			0		NA
65	K113	C	Classroom	23			1		X
66	K114	C	Classroom	22			1		X
67	K121	C	Classroom	19			1		X
68	K122	C	Classroom	19			1		X
69	K130	C	Classroom	19		1	X		
70	L 101	C	Classroom (Math Tutoring)	23		L	1	1	X
71	L 102	A	Classroom (Comp Lab)	23			1		X
72	L 103	C	Classroom (Math Lab (North))	23			1		X
73	L 104	C	Classroom (Math Lab (South))	23			1		X

15

8

CC PAGE 3

4

17

18

19

20

74	M 101	C	Classroom (West)	24		M	1		X
75	M 104	C	Classroom (Middle)	24		M	1	1	X
76	M 111	C	Classroom (East)	24		M	1		X
Total room Qty							Rooms completed	Buildings Completed	
76							76	10	

3

21

22

7/26/2023	Progress Percentage		Summa
100.00%	Percent complete by Room		Rooms that
100.00%	Percent complete by Building		installation
100.00%	Percent complete by building that have all equipment serial logs submitted and Campus accepted.		Buildings
			completed
			Buildings
			100%

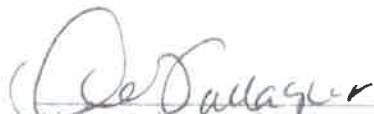
CC PAGE 4

MOU between GCCCD  
and  
AFT Guild Local 1931

**MEMORANDUM OF UNDERSTANDING (MOU)  
BETWEEN THE  
GROSSMONT-CUYAMACA COMMUNITY COLLEGE DISTRICT  
AND THE  
AFT GUILD, LOCAL 1931**

The parties agree to the following provisions regarding the installment and use of cameras within the District. These provisions shall take effect as of the date of this fully executed MOU.

1. Recognizing the need to maintain a safe and secure environment, the District and AFT agree that the purpose for the installation of video surveillance cameras on District property is to promote and ensure the safety and security of students, staff, and District property and is not intended for employee discipline. The District and AFT agree that surveillance cameras are not intended to replace or circumvent the supervisory or managerial responsibilities associated with employee supervision, evaluation, and discipline.
2. Video cameras may only be installed in public spaces that would be considered public forums in which the public has access to and will not be installed within internal work spaces.
3. The camera feeds and records can only be accessed by the necessary safety personnel in the course of their regular work duties except as required by court order or part of an internal disciplinary investigation concerning allegations of immoral conduct, sexual misconduct, violation of BP 3410/3430, or as part of an internal investigation regarding alleged criminal activity.
4. The parties agree that the intended purpose and use of the cameras are for safety surveillance and not be used to replace or circumvent supervisory or managerial responsibilities. If as a result of a review of the video recording, unrelated to any type of disciplinary issue, a surveillance camera incidentally records an employee committing a crime or violating a District policy that would generally give rise to disciplinary action, the District may use that video recording as evidence in disciplinary proceedings.
5. In no cases may any video recording be used to initiate or substantiate performance issues.
6. The District will provide the AFT Guild, upon request, with a report on camera access including the date and time the camera or recording was accessed and by whom the camera or recording was accessed.

  
Aimee Gallagher, Interim Vice Chancellor,  
Human Resources

Date: 8-4-22

  
Jim Mahler, President,  
AFT Guild, Local 1931

Date: 8-4-22



# MOU between GCCCD and AA

MOU between GCCCD and AA  
(to be provided at a later date)

MOU between  
GCCCD and CSEA and its Chapter 707

**MOU BETWEEN THE  
GROSSMONT-CUYAMACA COMMUNITY COLLEGE DISTRICT  
AND THE  
CALIFORNIA SCHOOL EMPLOYEES ASSOCIATION AND ITS CHAPTER 707**

The parties agree to the following provisions regarding the installment and use of cameras within the District. These provisions shall take effect on the date of this fully executed MOU.

1. Recognizing the need to maintain a safe and secure environment, the District and CSEA agree that the purpose for the installation of video surveillance cameras on District property is to promote and ensure the safety and security of students, staff, and District property and is not intended for employee discipline. The District and CSEA agree that surveillance cameras are not intended to replace or circumvent the supervisory or managerial responsibilities associated with employee supervision, evaluation, and discipline.
2. Video cameras may only be installed in public spaces that would be considered public forums in which the public has access to and will not be installed within internal workspaces.
3. No cameras will utilize audio recording at any time. If the District determines that audio recordings will be utilized at a later date, it will notify CSEA who may then initiate negotiations regarding audio recordings.
4. Signage will be placed in clearly visible areas on District property to ensure proper notification of the presence of cameras.
5. The camera feeds and records can only be accessed by the necessary safety personnel in the course of their regular work duties except as required by court order or part of an internal disciplinary investigation concerning allegations of immoral conduct, sexual misconduct, violation of BP 3410/3430, or as part of an internal investigation regarding alleged criminal activity. All District personnel who have been provided with access to the District's video recordings, including administrators and technical personnel pertinent to the implementation of the video surveillance procedures, shall sign a confidentiality agreement.
6. If as a result of a review of the video recording, unrelated to any type of disciplinary issue, a surveillance camera incidentally records an employee committing a crime or violating a District policy that would generally give rise to disciplinary action, the District may use that video recording as evidence in disciplinary proceedings. CSEA will be notified and afforded the right to also have equal access to camera footage being used in any discipline issue.
7. In no cases may any video recording be used to initiate or substantiate performance issues.

8. The District will provide the CSEA, upon request, with a report on camera access including the date and time the camera or recording was accessed and by whom the camera or recording was accessed. Recordings will not be kept longer than 30 days. If the District decides to retain recordings for more than 30 days it will notify the union.
9. In the event of the installation of additional cameras or if the location of a camera is moved, the District will notify CSEA of the placement of additional cameras or changed placement within 10 business days.
10. This agreement is subject to both parties' internal approval process, shall not expire, and shall be placed in the appendices of the Collective Bargaining Agreement (CBA) during the subsequent available successor negotiations. This agreement is subject to the grievance process within the CBA.

Aimee Gallagher

Aimee Gallagher (Jan 23, 2023 12:40 PST)

Aimee Gallagher, GCCCD

Date: Jan 23, 2023

Colleen Parsons

Colleen Parsons (Jan 9, 2023 09:57 PST)

Colleen Parsons, CSEA and its Chapter 707

Date: Jan 9, 2023

Craig Leedham

Craig Leedham (Jan 12, 2023 10:03 PST)

Craig Leedham, GCCCD

Date: Jan 12, 2023

Kyler Miller

Kyler Miller, CSEA

Date: Jan 9, 2023