

# Key Performance Indicators

## Student Goals

# Grossmont College

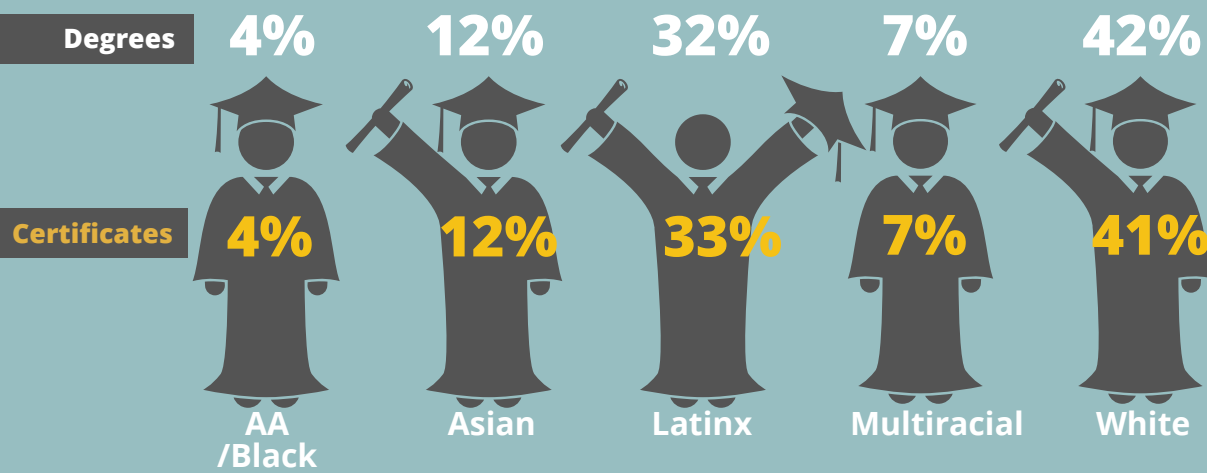
A brief overview of our key performance indicators from the 2016 - 2019 Academic Years.

1. Over the past 4 years there has been a **20% increase in degree recipients** and **25% increase in certificate recipients.**



● Certificates  
● Degrees

2. Certificate & Degree rates in 2019-2020.



### CERTIFICATES & DEGREES

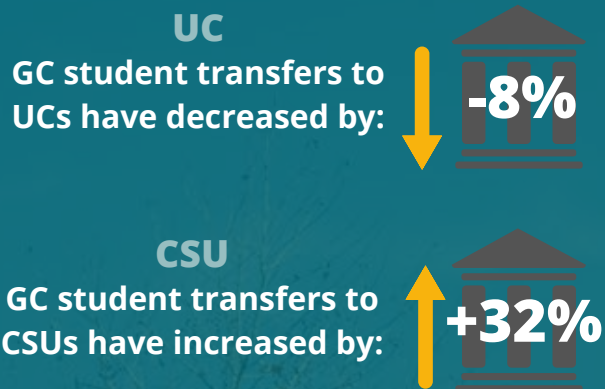
Asian & White students are overrepresented among both Certificate & Degree recipients.

Latinx student Certificate & Degree completion rate has steadily increased over the past 4 years while steadily decreased for White students.

American Indian/Alaskan Native & Pacific Islander students made up 0% of Certificate & Degree recipients during the 2019-2020 academic year.

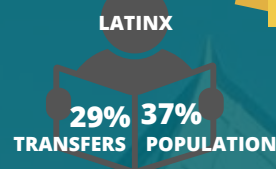
All other racial groups completion rate remained steady over the past 4 years.

3. Most Grossmont college students that transfer to a 4-year college or university, transfer to CSUs.



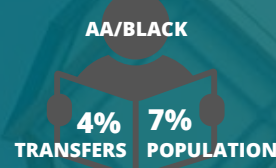
### RACE/ETHNICITY

Among UC transfers, Latinx students were underrepresented.

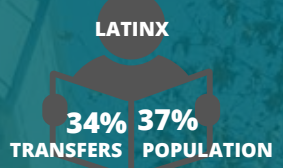


### RACE/ETHNICITY

Among CSU transfers, African American/Black & Latinx students were underrepresented.



2020-2021



Transfer-prepared students are consistently double the number of actual transfers.

4. In 2018-2019 only 44% of our recent grads reported that they were employed.



Employment & Living Wage Rates have not changed over the past 4 years.

### RACE/ETHNICITY

Asian & Filipino students were the least likely to be employed.

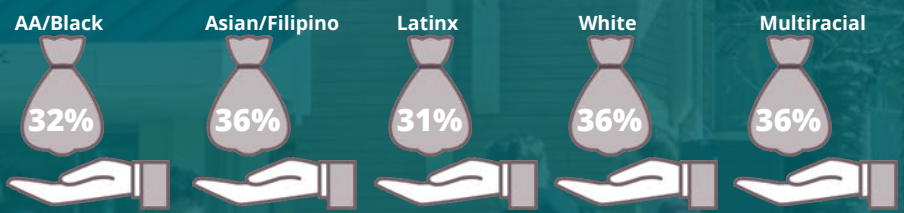
### GENDER

Female students are more likely to become employed than male students, with the exception of the 2014-2015 cohort & 2017-2018 cohort.

5. Overall only 33% of our past students from the 2018-2019 cohort have reported attaining a living wage.

LIVING WAGE IN 2018 WAS \$36,705

**RACE/ETHNICITY**  
Multiracial students were the least likely to have attained a living wage.



### GENDER

Male students are more likely to attain a living wage than female students.

